

STAINLESS STEEL

MERIDIAN



MERIDIAN

STAINLESS STEEL

## PEOPLE.

The driving force at Meridian Manufacturing is the committed ingenuity of employees and dealers, as well as relationships built with our valued customers. Our team takes pride in the work we do and are committed to delivering innovative and reliable storage and handling products.



## PRODUCTS

For Meridian Manufacturing, integrity means setting standards in product and service excellence. As a proven industry leader, our commitment to product innovation and customer support is our greatest pursuit.



## PERFORMANCE

Our people and products deliver quality performance for you and your operation. We believe that when you are successful, so are we.



## MERIDIAN STAINLESS TANKS

# LONG LASTING PERFORMANCE



Meridian Stainless Steel Tanks are the superior, long lasting storage solution. Stainless Steel is stronger, cleaner and offers superior corrosion resistance to mild steel, making it the best choice for food grade, liquid or corrosive material storage.

When you need specialized storage you can depend on, look no further than Meridian Stainless Steel Tanks. Meridian will custom design and build you stainless steel liquid or dry storage to fit all your project needs.

CONTENT | [FERTILIZER TANKS](#) 4 | [CHEMICAL TANKS](#) 6 | [STAINLESS HOPPERS](#) 8 | [AIRMIX](#) 10





**SAVE TIME, MONEY AND BECOME MORE EFFICIENT WITH MERIDIAN FERTILIZER TANKS.**



Model	Litres	CDN Gallons	MT	US Gallon	Ton	Diameter	Height
SS1220	65109	14335	85	17200	91.4	12	23'3"
SS1225	81008	17860	105	21400	114	12	28'3"
SS1230	96907	21380	126	25600	136	12	33'3"
SS1235	113184	24900	147	29900	159	12	38'3"
SS1240	129083	28425	168	34100	181	12	43'3"
SS1420	88957	19480	115	23500	150	14	23'6"
SS1425	110534	24260	143	29200	186	14	28'6"
SS1430	132489	29030	171	35000	223	14	33'6"
SS1435	154066	33800	199	40700	259	14	38'6"
SS1440	176022	38570	228	46500	296	14	43'6"
SS1620	116401	25630	151	30750	148	16	23'6"
SS1625	144860	31890	188	38268	187	16	28'6"
SS1630	173372	38160	225	45800	220	16	33'6"
SS1635	201778	44420	262	53304	260	16	38'6"
SS1640	230153	50680	299	60800	293	16	43'6"
SS1835	255742	56300	332	67560	325	16	37'9"
SS1840	291764	64230	379	77076	370	16	42'9"

Not all sizes available in all regions. Contact [stainless@meridianmfg.com](mailto:stainless@meridianmfg.com) for full details.

**CALCULATIONS**

Capacities are based on 62 lbs/ft<sup>3</sup>.



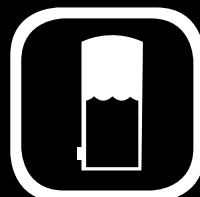
Save time, money and become more efficient by storing your liquid fertilizer with a Meridian Stainless Steel Tank. Meridian tanks offer the ideal solution to store your fertilizer on your operation, giving you instant access to your commodities and allowing you to purchase and stockpile fertilizer when prices are competitive. Built with 304 grade stainless, interior seams are back welded and then pressure tested. They undergo a wash and treatment system (Re-Passivation) removing free iron from the surface of metal using an acid solution to prevent rust. They come standard with features such as a 24" manway for easy access, easy read liquid sight gauge, and more.

**STANDARD FEATURES:**

- 304L stainless steel construction
- 24" manway for easy access to interior of tank
- 4" vented dome cap
- 10 degree slope on dome
- Two 4" FPT discharge and recirculating ports
- Volume labeled sight gauge
- 3/4" sight gauge tube with stainless auto shutoff valve
- Lifting Lugs
- 2 year manufacturer's warranty



**SAFE AND EFFECTIVE STORAGE WITH MERIDIAN CHEMICAL TANKS**



Meridian Stainless Steel Chemical Tanks are safe and effective storage for liquid chemicals. Built with 304 B2 or 316 grade stainless (depending on chemical requirements), interior seams are back welded and then pressure tested. They undergo a wash and treatment system (Re-Passivation) removing free iron from the surface of metal using an acid solution to prevent rust. Liquid fittings are added to these tanks, making the handling of liquid products trouble free. Our engineering team can help develop the perfect setup for your site, contact us today to learn more.



Item #	Model#	CDN Gallon	US Gallon	Diameter	Height
170412B	FRI 412 304 2BSS	948	1,139	4'	13'6"
170608B	FRI 608 304 2BSS	1,440	1,729	6'	9'10"
170610B	FRI 610 304 2BSS	1,792	2,152	6'	11'10"
170612B	FRI 612 304 2BSS	2,144	2,575	6'	13'10"
170614B	FRI 614 304 2BSS	2,496	2,998	6'	15'10"
170616B	FRI 616 304 2BSS	2,848	3,421	6'	20'6"
170804B	FRI 804 304 2BSS	1,325	1,592	8'	6'1"
170808B	FRI 808 304 2BSS	2,577	3,096	8'	10'1"
170810B	FRI 810 304 2BSS	3,204	3,848	8'	12'1"
170812B	FRI 812 304 2BSS	3,830	4,600	8'	14'1"
170814B	FRI 814 304 2BSS	4,456	5,352	8'	16'1"
170816B	FRI 816 304 2BSS	5,082	6,104	8'	18'1"
171010B	FRI 1010 304 2BSS	5,035	6,047	10'	13'3"
171012B	FRI 1012 304 2BSS	6,013	7,222	10'	15'3"
171014B	FRI 1014 304 2BSS	6,991	8,397	10'	17'3"
171210B	FRI 1210 304 2BSS	7,557	9,076	12'	14'2"
171212B	FRI 1212 304 2BSS	8,966	10,768	12'	16'2"
171214B	FRI 1214 304 2BSS	10,375	12,460	12'	18'2"
171216B	FRI 1216 304 2BSS	11,897	14,288	12'	20'2"
171220B	FRI 1220 304 2BSS	14,715	17,672	12'	24'2"
171224B	FRI 1224 304 2BSS	17,419	20,920	12'	28'2"

Not all sizes available in all regions. Contact [stainless@meridianmfg.com](mailto:stainless@meridianmfg.com) for full details.

**CALCULATIONS**

Capacities are based on 62 lbs/ft<sup>3</sup>.

**STANDARD FEATURES:**

- Cone bottom for total cleanout
- 304L Stainless steel construction
- 16" manhole in roof with single latch lid





Meridian Stainless Steel Bins are available with a variety of powder coats, including food grade finishes. Bins also available with options such as vents, fill tubes, and site gauges. See full options at meridianmfg.com

Model #	Cubic Feet	US Gallon	Imp. Gallon	Metric Tonne	Bin Height
1212	1740	13020	10840	49	23'8"
1412	2457	18377	15302	69	25'3"
1612	3237	24213	20162	91	25'11"
1615	3840	28726	23919	108	28'11"
1620	4845	26246	30180	136	33'11"
1625	5851	43766	36443	165	38'11"
1630	6856	51286	42705	193	43'11"

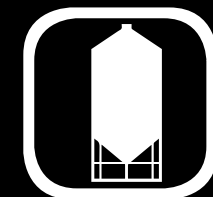
Not all sizes available in all regions. Contact [stainless@meridianmfg.com](mailto:stainless@meridianmfg.com) for full details.

**CALCULATIONS**

Capacities are based on 62 lbs/ft<sup>3</sup>.



Shown with available insulated cladding.



Meridian's Stainless Steel Hopper Bins offer reliable and durable storage for your corrosive dry bulk solids. Built with 304 stainless, these bins combine the efficiency of a hopper bin with the long lasting performance of stainless steel. Meridian Stainless Hopper Bins are used in a large range of industries, including agri-business, canola oil storage, water storage, brewing and more customized applications. Meridian offers a powder coat finish for certain applications that require deflection to prevent condensation.

**STANDARD FEATURES:**

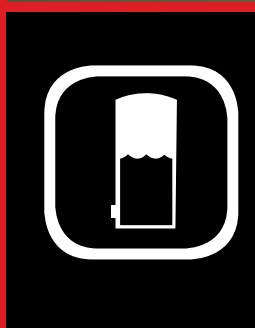
- 304L stainless construction
- 24" manway for easy access of interior of tank
- Volume labeled sight gauge
- Lifting Lugs
- 2 year manufacturer's warranty
- Min. 40 degree bottom cone and 35 degree roof cone
- 24" clearing under slide gate
- Retractable ladder



**AIRMIX LIQUID AERATION**



**MERIDIAN AIRMIX: AUTOMATED AND GENTLE MIXING ACTION**



Meridian's new AirMix Liquid Fluidizer is a computerized system of pulsating air injection across the bottom of the tank to agitate and suspend liquids. Users can select the speeds and settings of the pulsing action with Meridian's Variable Control System, changing the duration and frequency of the air agitation within the tank. Gentle mixing action, low compressor HP requirements and full automation make the AirMix a great feature on any liquid storage tank.



**PEOPLE. PRODUCTS. PERFORMANCE.**





**PEOPLE. PRODUCTS. PERFORMANCE.**

[meridianmfg.com](http://meridianmfg.com) | [stainless@meridianmfg.com](mailto:stainless@meridianmfg.com) | (800) 830-2467