



MERIDIAN SECONDARY CONTAINMENT



Meridian's Secondary Containment Systems are designed to offer uncompromised environmental protection against hazardous spills or storage tank failures. Meridian Secondary Containment is precision engineered for ultimate product life cycle & integrity while delivering environmental protection peace of mind by the minute for your application



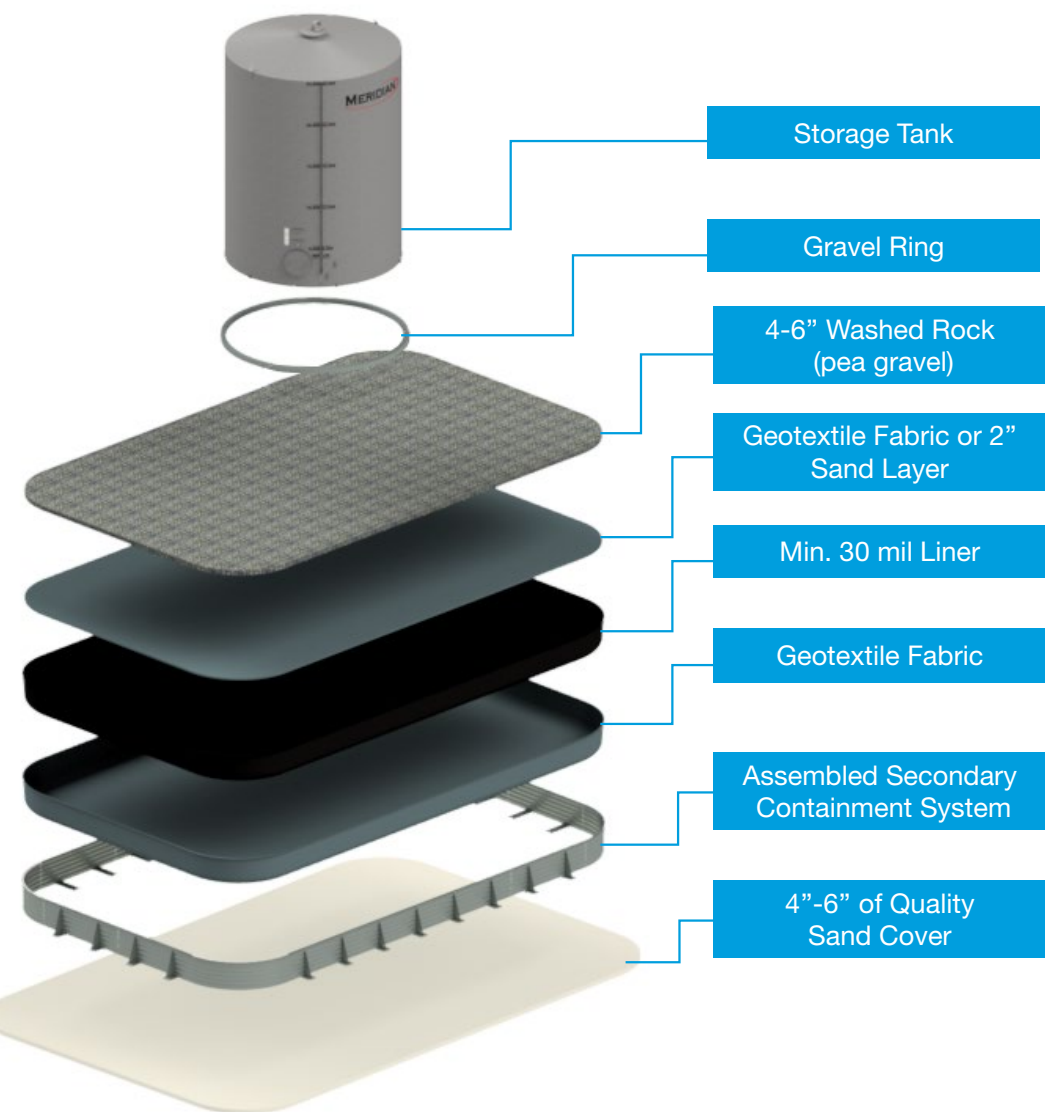
Meridian Manufacturing offers innovative secondary containment systems for all industries requiring environmental protection from spills and leaks. We take extra steps to safeguard our systems by utilizing top-grade materials and designs that meet or exceed environmental guidelines.

Galvanized steel secondary containment systems offer exceptional value, durability and quality. Galvanized steel has proven to resist rust & corrosion even in the harshest environments with virtually no maintenance. Our 12 & 15 gauge panels are ASTM A653 Grade 50 (50,000 psi minimum yield strength, 65,000 psi minimum tensile strength), and all galvanized material components are coated to ASTM A653 standards.

Meridian galvanized panels are precision cut, corrugated and punched for trouble free assembly in the field. The manageable panel size and weight make for simple, straight forward assembly. Our design allows for many unique configurations, easy expansion and reconfiguration.

ENGINEERED PROTECTION

Meridian engineers utilize 3D modeling and Finite Element Analysis (FEA) software to ensure that stress points are designed to meet or exceed structural regulations with the ultimate goal of delivering the strongest and most environmentally safe system in the industry.



Structural design criteria are based on systems at 100% capacity.

Meridian's engineers design the systems to exceed the Environmental Protection Agency (EPA) Standards and the Alberta EUB G55 guideline for oil spill prevention and counter measures.

Our designs are in full compliance with:

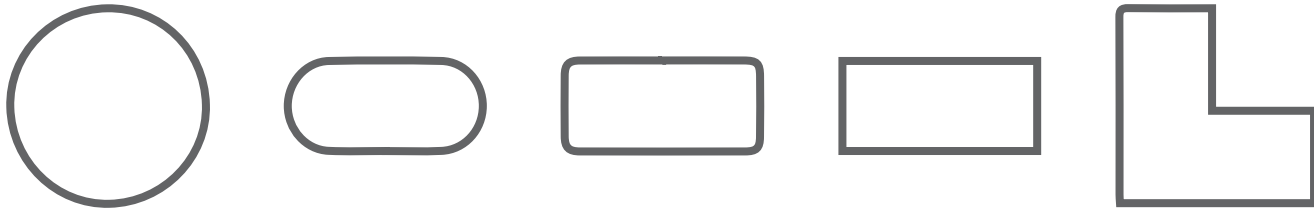
- Canadian Standards Association's Specification for the Design of Steel Structures (S16)
- American Iron and Steel Institute's Specification for the Design of Cold-Formed Steel Structural Members (S136)

All systems & accessories come complete with detailed assembly manuals or drawings.

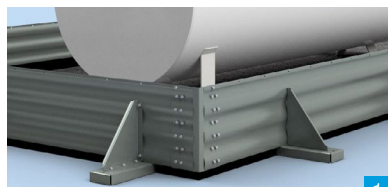
Layout drawings with a professional engineer's stamp can be provided upon request.

FLEXIBLE LAYOUT

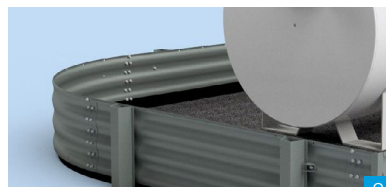
- Configuration possibilities include square, rectangular (radius corner option), L shaped, oblong & round
- Depending on the size most systems can be installed in as little as one day
- Systems can easily be dismantled to move from site to site and the modular design provides for easy access for system maintenance or panel addition or replacement
- The systems modular designs allow for easy and affordable global shipping
- Site specific custom layouts available to fit your exact requirements
- Inner containment cell separation walls can be added



Top View Layout Examples



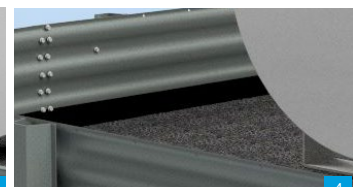
Square Corner with
Zero Ground Disturbance Panel Bracing



Radius Corner with
Post Panel Bracing



Radius Corner Showing
Top Mount Liner



Base Mount Liner

Side Panel Options

12 & 15 gauge
Long panels: 113.375" bolted coverage
Medium panels: 75.625" bolted coverage
Short panels: 56.688" bolted coverage
Panel heights: 17", 24", 34", 47", 67"
Ultra flat 5.22" x 0.48" deep corrugated profile for lateral strength structural rigidity and integrity

Corner Panel Options

Square Corner panels (fig. 1)
Panel heights: 17", 24", 34", 47", 67"
Radius Corner panels (fig. 2)
Long panels: 113.375" bolted coverage
Medium panels: 75.625" bolted coverage
Short panels: 56.688" bolted coverage
Panel heights: 17", 24", 34", 47", 67"

Liner Clamp Options

Top Mount Options (fig. 3)
Used with liquid fertilizer or other corrosive liquid applications
Base Mount Options (fig. 4)
Used with flammable liquids

Panel Bracing Options

Ground Zero Panel Bracing (fig. 1)

Used when ground surface penetration is not desirable or safe. Features augerless no cast in place concrete installation. They are also perfect for frozen ground or remote site installation.

Concrete Mount Braces (fig. 1 less pad)

Allows for surface mounting to existing or new concrete pads.

Post Braces (fig. 2)

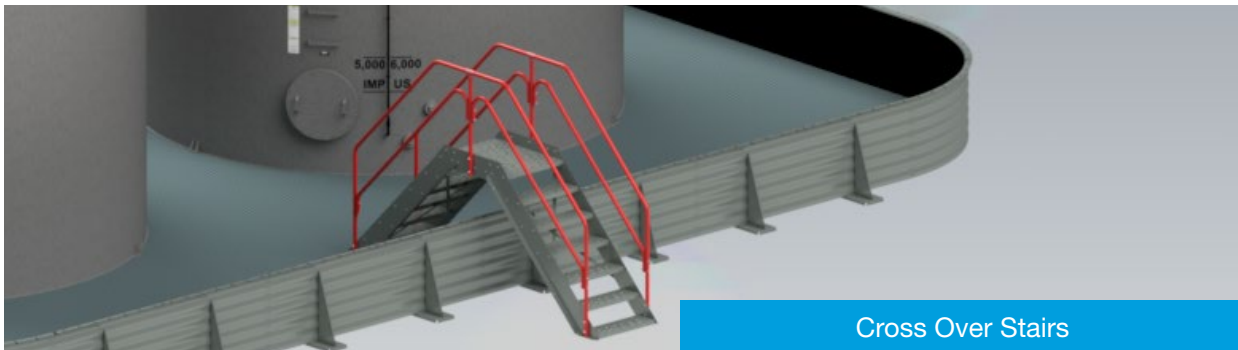
Used when the ground surface may be penetrated and offers additional safety factors to withstand higher potential wall loads. Posts are set in concrete with a clip system that allows for frost heave movement to occur.

Posts or ground zero brace & pads are required for all straight wall systems.

Hardware & Sealing Strips

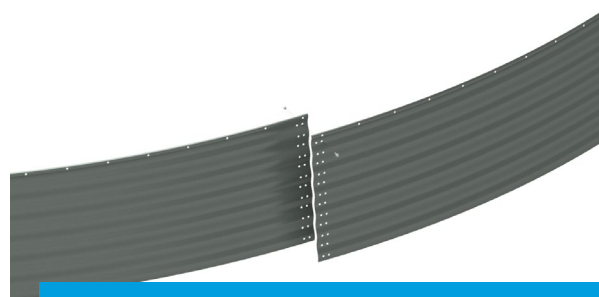
- All structural bolts are Gr 8.2 as per SAE J429. Bolts are JS1000 zinc plated
- Sealing strips provided with base mount liner systems are resistant to petroleum products for durable and long-lasting water tight seam
- Sealing strips are fast and easy to apply
- All hardware, sealant and small parts are factory crated for shipping ease and component supply accuracy

SECONDARY CONTAINMENT ACCESSORIES



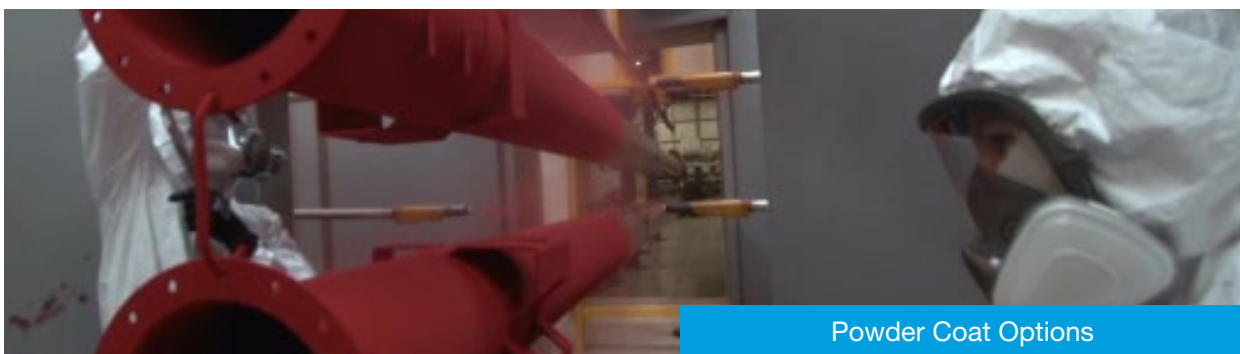
Cross Over Stairs

- Allow for safe entry & exit from the containment cell
- Heavy gauge galvanized steel construction
- Extra wide 30" clearance between hand rails
- High visibility red powder coat paint on hand rails & knee boards
- Designed to meet or exceed OSHA standards
- Optional platform extensions in 4' & 6' lengths



Galvanized Tank Foundation Rings

- Filled with aggregate or concrete raise the primary tank above the surrounding grade and provides a level base
- Keeps the tank out of a potentially damp environment and increases the life of the tank bottom
- Corrugated & non-corrugated, pre-curved or flat



Powder Coat Options

- Powder coating is significantly more durable than conventional liquid paints and is more resistant to chips, scratches, fading and wearing than other finishes
- Powder coating is environmentally friendly and there are no solvents or hazardous material used
- Government Bureau of Land Management approved colors, custom corporate colors or a need to blend in with the surroundings can be accommodated as we can provide custom colors and color matching to meet the project requirements.



© 2019 Meridian Manufacturing Inc. Registered Trademarks Used Under License. (02/2019)