



# ASSEMBLY AND PARTS LIST MANUAL



## SLMD SERIES AUGER

SLMD10-59 • SLMD10-66  
SLMD10-72



[www.meridianmfg.com](http://www.meridianmfg.com)

# DECLARATION OF CONFORMITY

We the Manufacturer:

**Meridian Manufacturing Inc.**  
**PO Box 1996 2800 Pasqua Street North**  
**Regina, Sk, Canada**  
**S4P 3E1**

Declare the Augers listed below conform to the 2006/42/EC Machinery Directive

SLMD10 Series

WFN 1517-1518, 1910

The Meridian SLMD10 Series Auger and Tube Assembly is designed for the movement of Grains and Cereals.

## PATENT INFORMATION



Meridian continuously enhances its product offering through product improvements and new product innovations. Marketplace feedback, technological innovation, new materials and manufacturing methods, and a philosophy of continuous improvement constantly challenge the company to develop new and better ways of addressing market needs. Meridian is committed to innovation and reinvestment and as a result, the company maintains a portfolio of patents and intellectual property. For more information on our patents please see our website:  
[www.meridianmfg.com/patents](http://www.meridianmfg.com/patents)

# TABLE OF CONTENTS

**GENERAL**

- A1 Declaration of Conformity
- A2 Table of Contents
- A3 Sign Off Sheet

**ASSEMBLY**

- B1 Set Up Procedure
- B2 Tube And Truss Assembly
- B4 Winch Assembly
- B5 Hitch Assembly
- B6 Top Lift Frame Assembly
- B7 Frame Assembly
- B8 Lift Arm Assembly
- B9 Feed Tube Assembly
- B10 Hopper Assembly

**PARTS**

- C1 Main Frame Assembly - SLMD10-59
- C3 Main Frame Assembly - SLMD10-66
- C5 Main Frame Assembly - SLMD10-72
- C7 A-Frame Assembly - SLMD10-59
- C8 A-Frame Assembly - SLMD10-66
- C9 A-Frame Assembly - SLMD10-72
- C10 PTO Shaft Assembly
- C11 Hopper - 74"
- C13 Hopper - 60"
- C15 Feed Auger Head & Tube
- C17 Lift Arm
- C19 Top Gear Box
- C20 Bottom Gear Box
- C21 Boot
- C23 Tube Assembly 12-72
- C25 Tube Assembly 12-79
- C27 Tube Assembly 12-85
- C29 Truss Assembly
- C31 Fulton K1550 Brake Winch
- C32 Bolt On Winch Plate
- C33 Optional - Winch Hydraulic Kit
- C35 Optional - Gear Reducer
- C36 General Parts

**INDEX**

- D1 Parts Index

**WARRANTY**

- E1 Limited Warranty Statement



# SET UP PROCEDURE

1. Follow and complete steps 1 through 20 on page B2 using page B3 reference drawings and then proceed to step 2 on this page.
2. Follow and complete steps 1 through 9 on page B4 and then proceed to step 3 on this page.
3. Follow and complete steps 1 through 4 on page B5 and then proceed to step 4 on this page.
4. Follow and complete steps 1 through 7 on page B6 and then proceed to step 5 on this page.
5. Follow and complete steps 1 through 6 on page B7 and then proceed to step 6 on this page.
6. Place assembled (FIGURE 9) under assembled (FIGURE 1). Connect the two assemblies with two 1" dia. x 2-1/2" bolts and lock nuts. NOTE: Refer to (FIGURE 1) for the top lift frame assembly mounting location. Proceed to step 7 on this page.
7. Lift the now assembled (FIGURE 1 & 9) together and position it over the partially assembled (FIGURE 10). Line up bottom of top lift frame to the top of the bottom lift frame. Install a pivot bushing to each side. Fasten the assemblies together at each side with 1" dia. x 8" bolt, two plated washers and a lock nut. Proceed to step 8 on this page.
8. Raise the auger tube assembly and then continue with steps 7 through 10 on page B7 before proceeding with step 9 on this page.
9. Follow and complete steps 1 through 6 on page B8, and then proceed to step 10 on this page.
10. Hydraulic lines:  
Short Line connected to upper steel hydraulic line and hydraulic cylinder.  
Connect valve to the lower steel hydraulic line and then attach long line to valve.  
Complete long line assembly with pioneer tip.  
Proceed to step 11 on this page.
11. Follow and complete steps 5 through 8 on page B5 and then proceed to step 12 on this page.
12. Follow and complete steps 1 through 7 on page B9 and then proceed to step 13 on this page.
13. Follow and complete steps 1 through 8 on page B10 and then proceed to step 14 on this page.
14. Check that all bolts are tightened, pins are in place, fittings are greased and that all safety guards and shields are installed. Ensure proper air pressure in all tires.

# TUBE AND TRUSS ASSEMBLY

1. Connect tube assembly **A** to tube assembly **B** as shown in **(FIGURE 01)**, ensure proper alignment of flight assemblies.
2. Lift **BOOT END** of **TUBE ASSEMBLY** min. 24" high.
3. Assemble truss risers **(FIGURES 03, 04 & 05)** in the order indicated in **(FIGURE 01)**.
4. Position one **SHORT CABLE** and one **LONG CABLE** straight and flat on the floor to the left and right of the tube assembly.
5. Install **SHORT CABLE** spanning from **(FIGURE 03 to 05)**. See **(FIGURE 01)**. Fasten to **(FIGURE 05)** first using 5/8" dia. bolt, flat washer and bushing. Tighten.
6. Fasten **SHORT CABLE** to bottom two holes in **(FIGURE 04)** using 3/8" cable clamp and nuts. Leave loose.
7. In **(FIGURE 03)** partially thread one of the two nuts to the eyebolt while attaching eyebolt to the **TUBE SADDLE**.
8. Thread **SHORT CABLE** thru eyebolt and pull tight. Attach two 1/4" cable clamps as shown in **(FIGURE 03)**.
9. Tighten partially threaded nut on eyebolt until adequate tension is achieved on short cable.
10. Thread second nut to eyebolt and lock.
11. Repeat steps 5 to 10 to install second **SHORT CABLE**.
12. Install **LONG CABLE** spanning from **(FIGURE 03 to 06)**. See **(FIGURE 01)**. Fasten to **(FIGURE 06)** first using 5/8" dia. bolt, flat washer and bushing. Tighten.
13. Fasten **LONG CABLE** to top two holes in **(FIGURE 03, 04 & 05)** using 3/8" cable clamp and nuts, leave loose.
14. In **(FIGURE 02)** partially thread one of the nuts to the eyebolt while attaching eyebolt to **TUBE SADDLE**.
15. Thread **LONG CABLE** through eyebolt and pull tight, and attach two 1/4" cable clamps as shown in **(FIGURE 02)**.
16. Tighten partially threaded nut on eyebolt until adequate tension is achieved on **LONG CABLE**.
17. Thread second nut to eyebolt and lock.
18. Repeat steps 12 to 17 to install second **LONG CABLE**.
19. Lower **BOOT-END** to floor, and tighten all truss riser cable clamps.
20. Refer to **SET UP PROCEDURES** page B1 step 2 for the next set of instructions.

# TUBE AND TRUSS ASSEMBLY

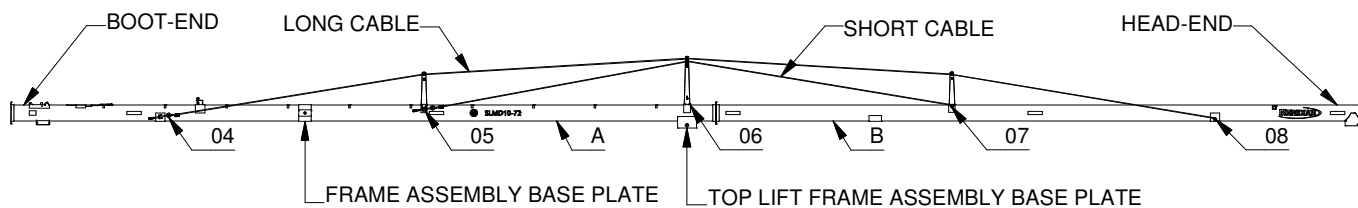


FIGURE 01

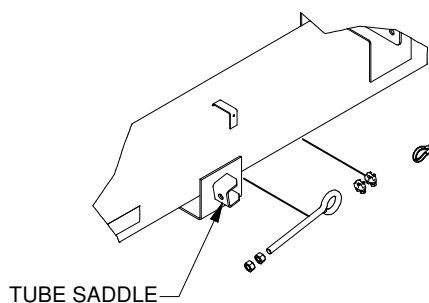


FIGURE 02

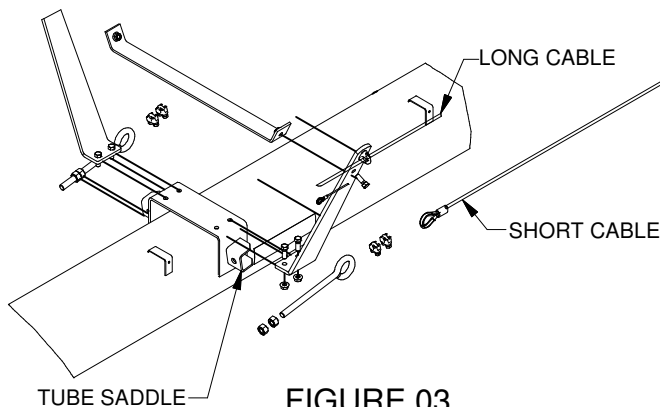


FIGURE 03

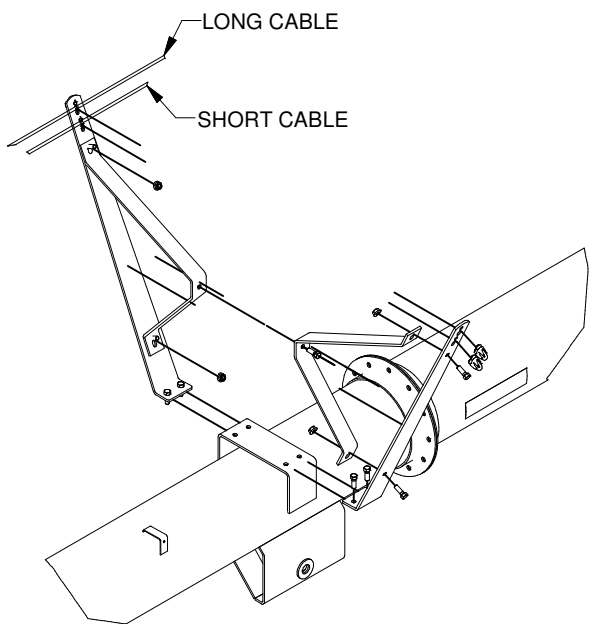


FIGURE 04

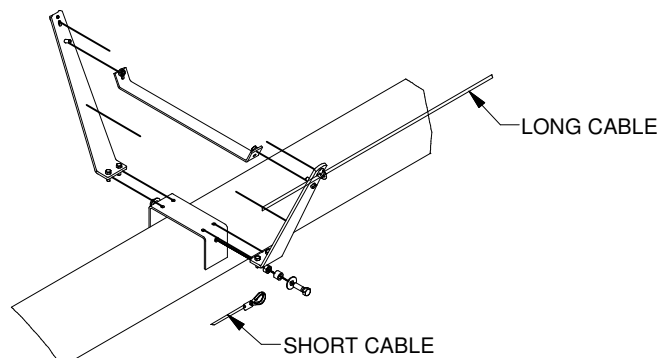


FIGURE 05

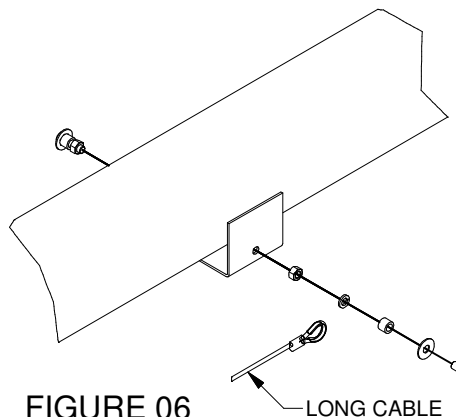


FIGURE 06

# WINCH ASSEMBLY

1. Attach item 1 to item 2 with 3/8" dia. carriage bolts and nuts. Leave loose. See **(FIGURE 07)**.
2. Mount items 1 and 2 to item 3 using 1/2 dia. x 5-1/2" bolt and lock nut at boot end, and 1/2" dia. x 9" bolt and lock nut at head end.
3. Install item 4 to item 1.
4. Position item 5 on item 6 and 4.
5. Tighten chain by pulling winch assembly towards the head-end and tighten the three carriage bolts from step 1.
6. Install item 7 to 6.
7. Insert item 8 through items 7 & 6.
8. Install **FEED TUBE ASSEMBLY HEAD END** with items 9, 10, 11 and 12 using six 7/16" x 1-1/4" carriage bolts c/w whiz nuts.
9. Refer to **SET UP PROCEDURE** page B1 step 3 for next set of instructions.

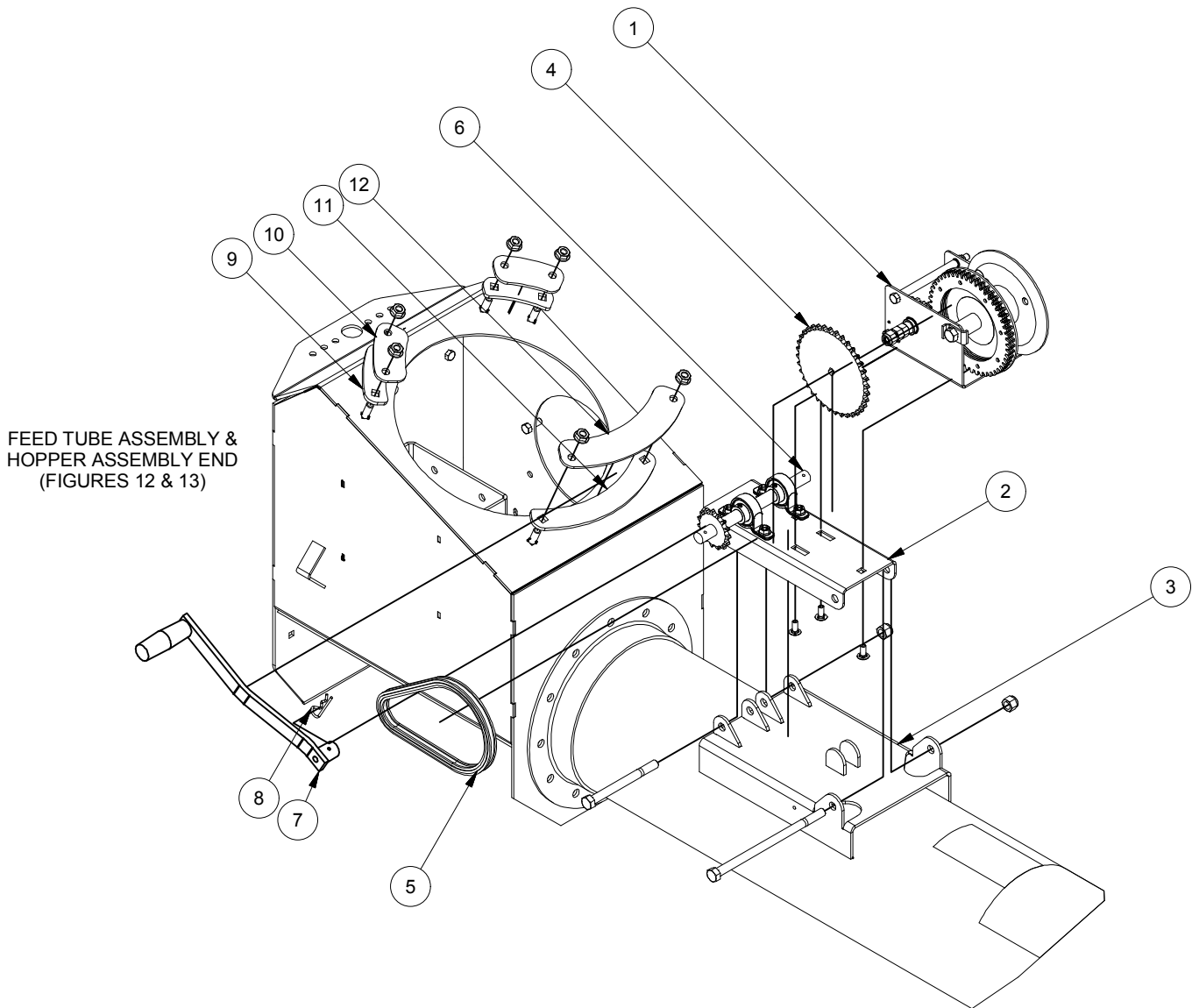
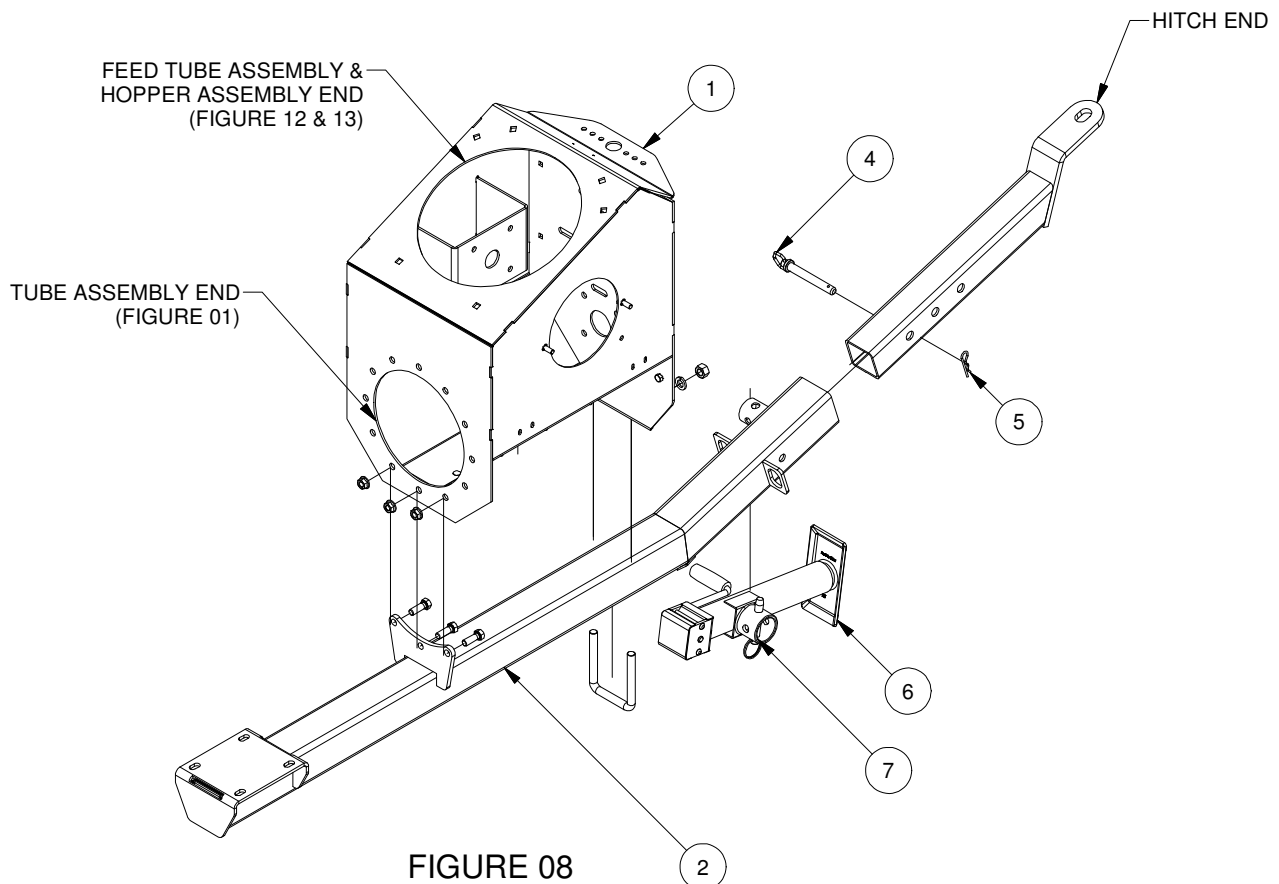


FIGURE 07



# HITCH ASSEMBLY

1. Install item 1 onto 2 using 5/8" dia. u-bolt, washers and lock nuts at **HITCH END**, and three 1/2" dia. bolts and lock nuts at **TUBE END ASSEMBLY**.
2. Insert item 3 into item 2 and lock in place using item 4.
3. Insert item 5 through item 4.
4. Refer to **SET UP PROCEDURE** page B1 Step 4 for the next set of instructions.
5. After completion of **SET-UP PROCEDURE** steps 4 through 10, continue with **HITCH ASSEMBLY** steps 6 to 8.
6. Insert item 2 into item 6.
7. Insert item 7 through items 6 and 2.
8. Refer to **SET UP PROCEDURE** page B1 step 12 for the next set of instructions.



# TOP LIFT FRAME ASSEMBLY

1. Lay frame out as shown in **(FIGURE 09)**. Ensure items **1 & 2** are on two 2x4's FLAT.
2. Fasten item **3** to item **4** using 1-1/8" dia. bolt and lock nut.
3. Connect item **1** to **4** using four 5/8" dia. x 1-1/2" UNC bolts, washers and nuts.
4. Connect item **1** to **5** using two 5/8" dia. x 1-1/2" carriage bolts, washers and nuts at the top, and two 5/8" dia. x 1-1/2" UNC bolts, washers and nuts at the bottom.
5. Connect item **2** to item **4** using four 5/8" dia. x 1-1/2" UNC bolts, washer and nuts.
6. Connect item **2** to **5** using two 5/8" dia. x 1-1/2" carriage bolts, washers and nuts at the top, and two 5/8" dia. x 1-1/2" UNC bolts, washers and nuts at the bottom.
7. Refer to **SET UP PROCEDURE** page B1 step 5 for the next set of instructions.

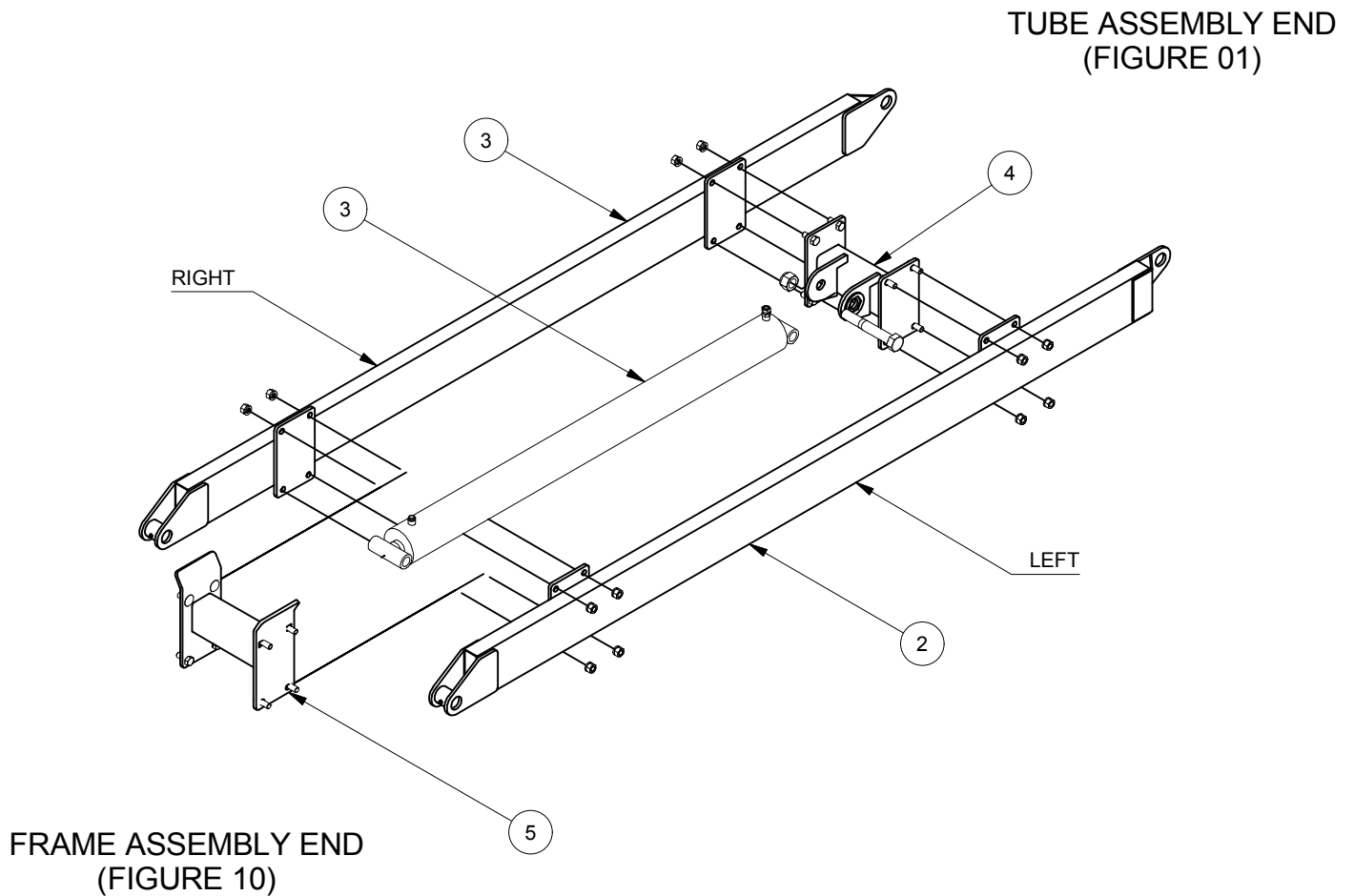


FIGURE 09

# FRAME ASSEMBLY

1. Lay frame out as shown in **(FIGURE 10)**, ensure item **2** (axle) is on jack stands prior to beginning assembly.
2. Fasten items **1** to item **2** using 5/8" dia. u-bolts.
3. Install items **3 & 4** to item **2** using 1" dia. bolts and locking nuts.
4. Install item **5** to tabs on inside of items **3 & 4** using 5/8" dia. u-bolts.
5. Insert items **6** into **2**, securing them using items **7 & 8**.
6. Refer to **SET UP PROCEDURE** page B1 steps 6 for the next set of instructions.
7. After completion of **SET UP PROCEDURE** steps 6 through 8, proceed to step 8 on this page.
8. Mount tires on rims and mount rims on axle spindles.
9. Install items **9 & 10** to item **1** using 5/8" dia. u bolts.
10. Fasten item **11** to item **3** and **4** using 5/8" dia. u-bolts.
11. Refer to **SET UP PROCEDURE** page B1 step 9 for next set of instructions.

TOP LIFT FRAME ASSEMBLY END  
(FIGURE 09)

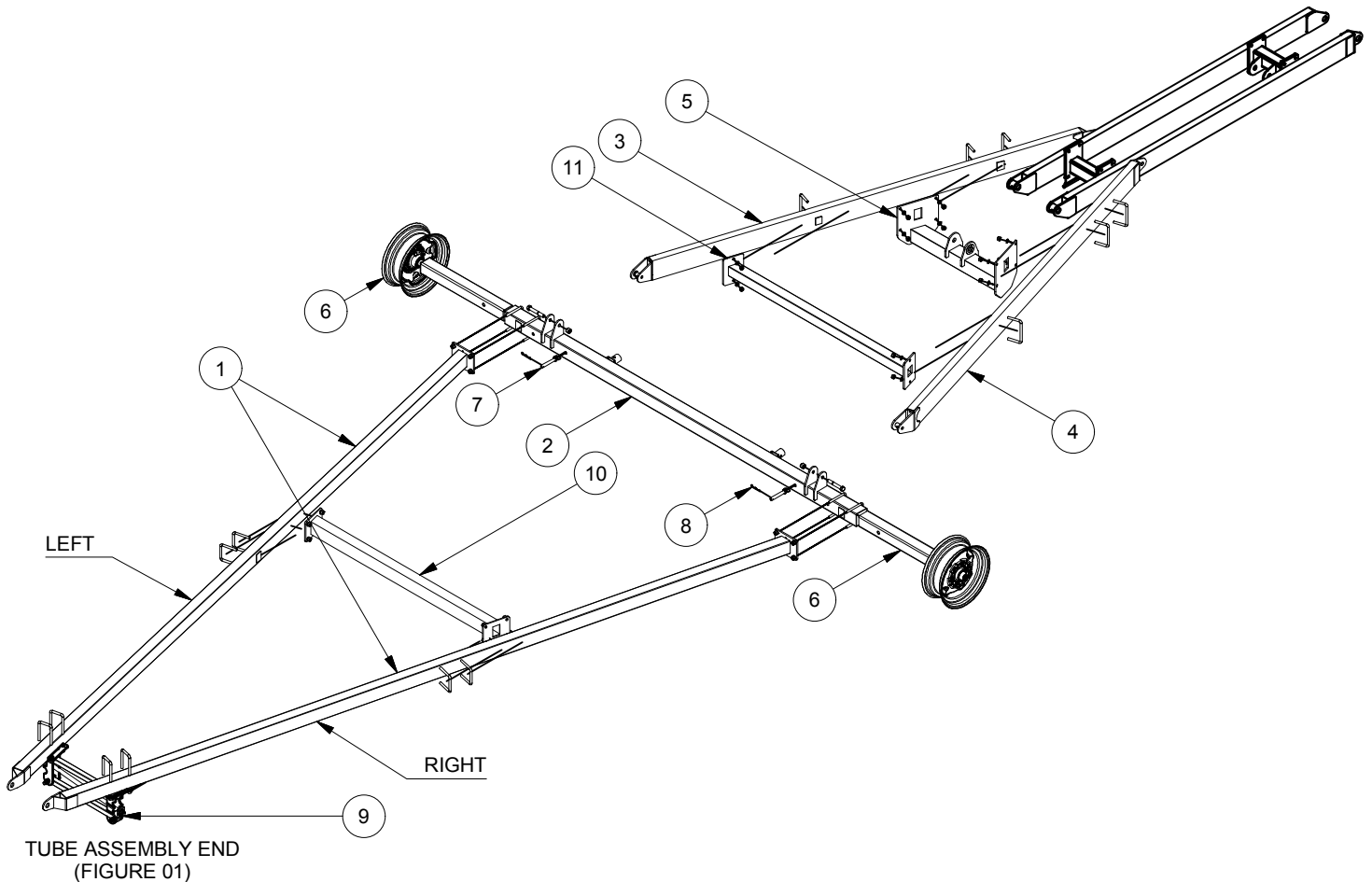


FIGURE 10

# LIFT ARM ASSEMBLY

1. Slide **LIFT ARM ASSEMBLY** into **SADDLE ASSEMBLY** and fasten in place using items **3** and **5**.
2. Install **CABLE ROLLER ASSEMBLY #1** and item **7** on to pin.
3. Thread cable end from winch around **CABLE ROLLER ASSEMBLY #1** and **#2** through **PIPE** and around **CABLE ROLLER ASSEMBLY #3**.
4. Slide cable through item **2**. Locate item **2** 7" from cable end. Bend the last 7" of cable back onto itself and fasten using item **1**. Locate Item **1** 4" above item **2**.
5. Slide item **6** over **PIN** and **SADDLE ASSEMBLY** and lock in place with item **4**.
6. Refer to **SET-UP PROCEDURE** page B1 step 10 for the next set of instructions.

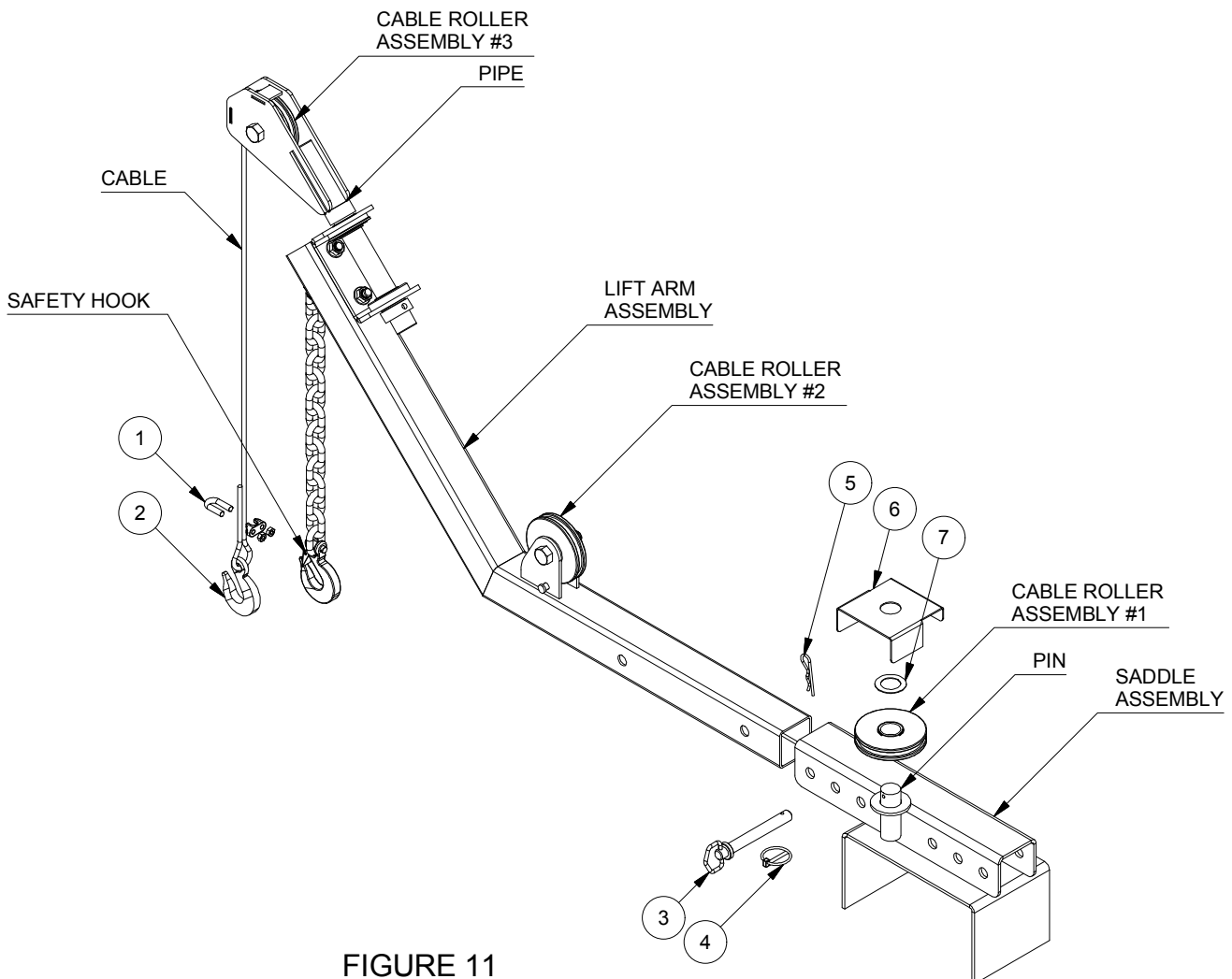


FIGURE 11

# FEED TUBE ASSEMBLY

1. Assemble item 1 to item 2 with two 5/8" dia. x 1-1/2" UNC bolt c/w lock nut.
2. Push item 3 between items 1 and 2.
3. Fasten item 3 to item 1 and 2 using two items 4.
4. Install item 5 to item 6.
5. Attach item 7 to item 2 with three 1/4" dia. x 3/4" whiz bolts c/w whiz nuts.
6. Install **UNIVERSAL JOINT** to top end of **GEAR BOX SHAFT**.
7. Refer to **SET UP PROCEDURES** page B1 Step 13 for next set of instructions

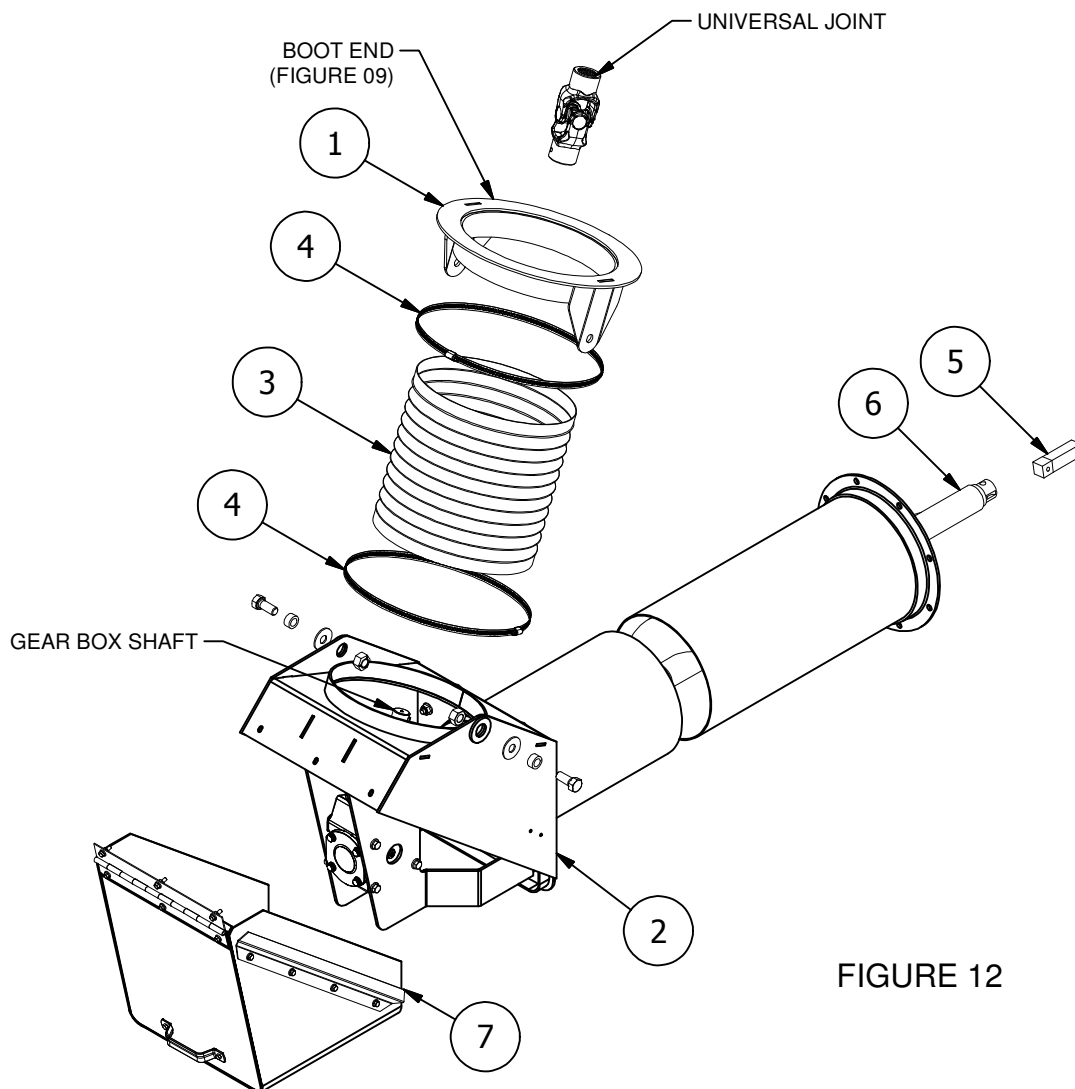


FIGURE 12

# HOPPER ASSEMBLY

1. Fasten items **6** and **7** to item **1** with 7  $\frac{5}{16}$ " x 1" carriage bolts and whiz nuts.
2. Fasten item **3** to item **1** in desired hole and use  $\frac{3}{4}$ " x 11" bolt with lock nut.
3. Assemble item **4** inside item **1**. Fasten with item **5** and  $\frac{3}{8}$ " x 1" carriage bolt with whiz nut.
4. Fasten item **9** and **8** to item **1** with  $\frac{1}{4}$ " x  $\frac{1}{2}$ " whiz bolts and whiz nuts. Ensure assembly is pulled towards **FEED TUBE ASSEMBLY END** before tightening.
5. Fasten item **2** to item **1** with 1" x  $2\frac{1}{2}$ " bolt, washer and lock nut.
6. Use item **10** to lock down item **9** to item **2**
7. Assemble **FEED TUBE ASSEMBLY** and **HOPPER ASSEMBLY** (**FIGURES 12 and 13**) with eight  $\frac{3}{8}$ " x  $1\frac{1}{4}$ " whiz bolt
8. Refer to **SET-UP PROCEDURE** page B1 step 14 for the next set of instructions.

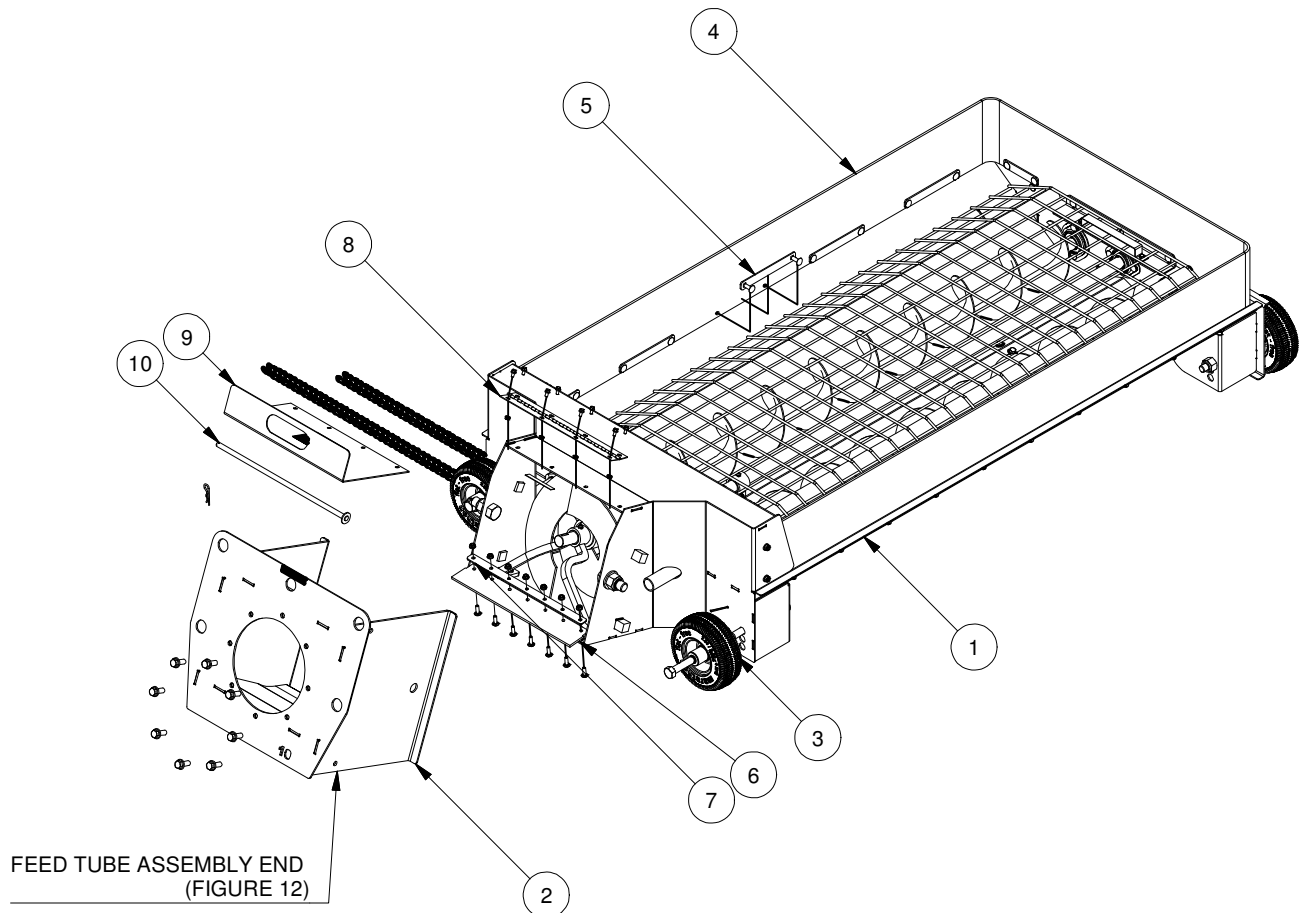
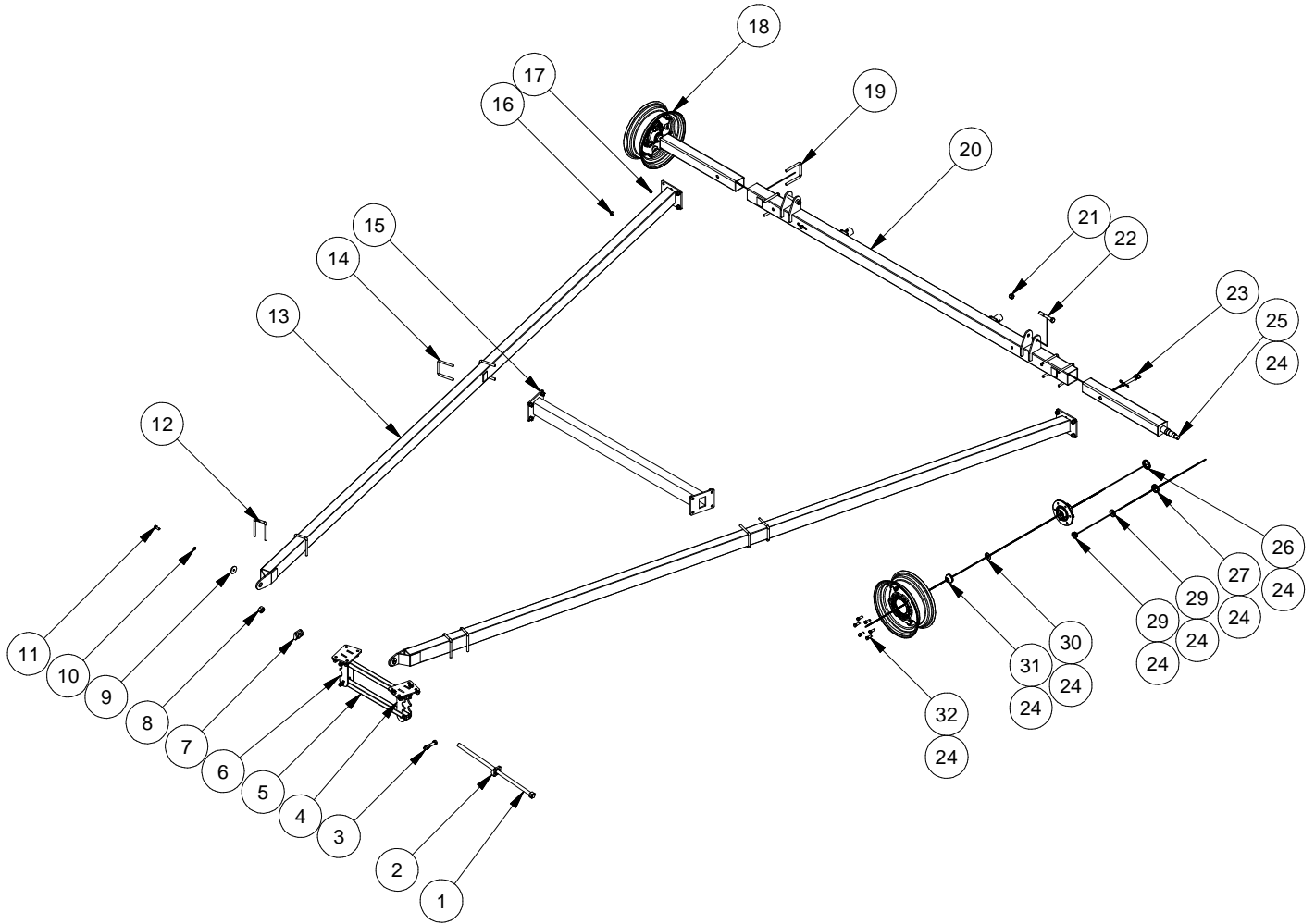
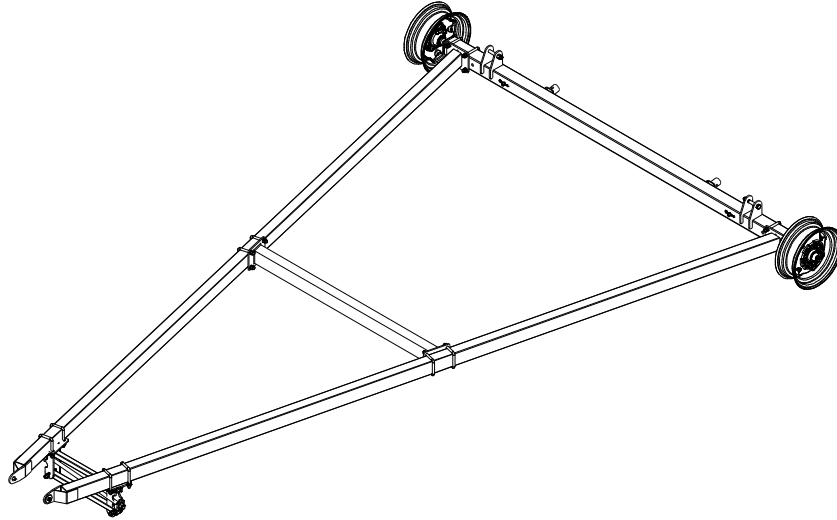


FIGURE 13

# MAIN FRAME - SLMD10-59



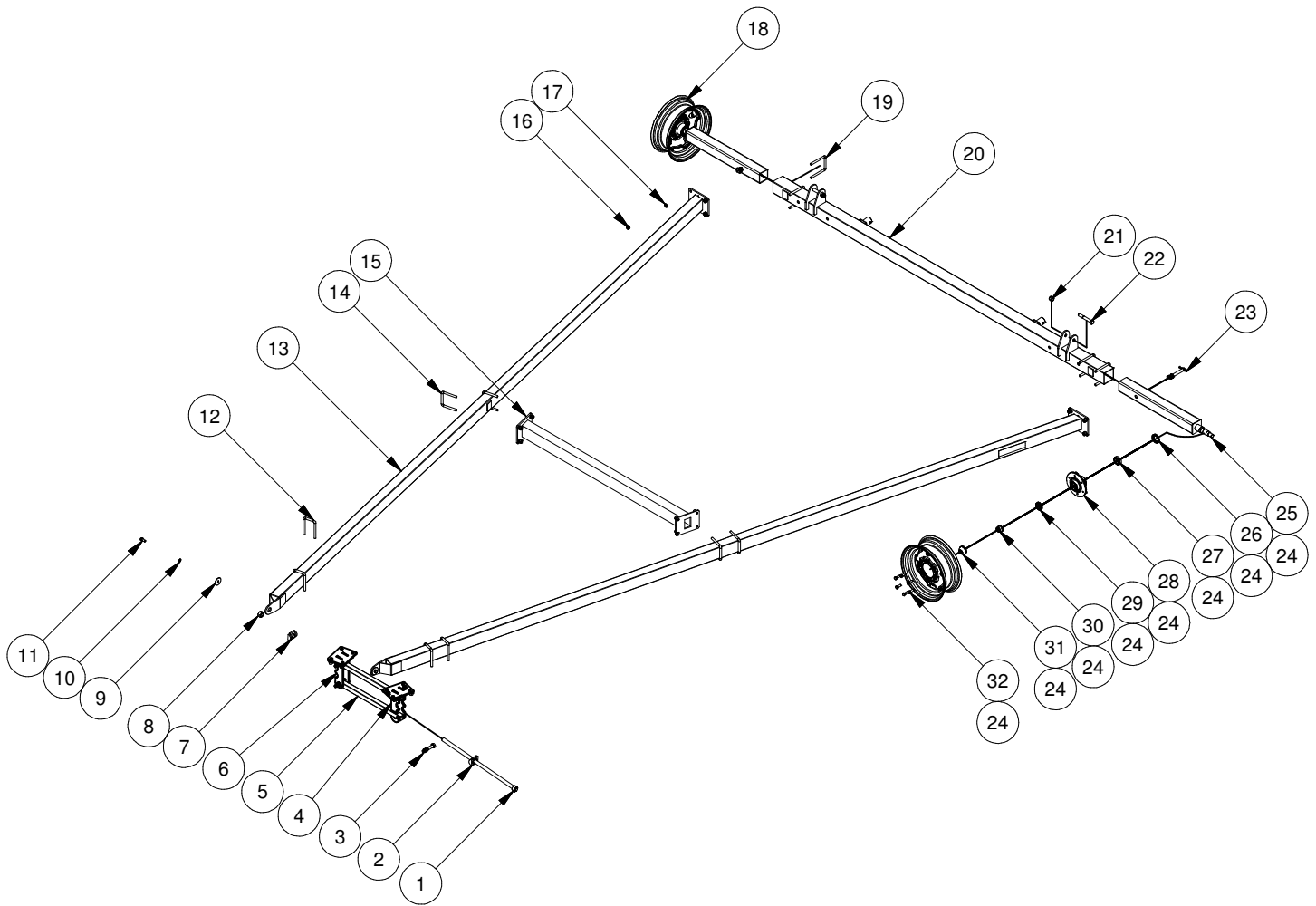
# MAIN FRAME - SLMD10-59



SLMD10-59			
REF #	PART #	QUANTITY	DESCRIPTION
1	13000003380-00	1	Threaded Rod Assembly
2	13000003382-00	1	Lock
3	13-0702-12064	4	Hex Cap Screw 3/4 x 4-10
4	13000003389-00	1	Tie Rod (L.H)
5	13000003379-00	2	Tie Rod
6	13000003390-00	1	Tie Rod (R.H)
7	13000003381-00	1	Threaded Rod Swivel Assembly
8	13-0725-00016	1	Hex Nut 1-8
9	13000003007-00	2	Washer Plated
10	13-0734-00008	2	Spring Lock Washer 1/2
11	13-0702-08020	2	Hex Cap Screw 1/2 x 1-1/4 -13
12	13000003388-00	4	Tie Rod Bracket U-Bolt
13	13000002998-00	2	Main Frame SLMD10-18
14	13000003005-00	4	Brace U-Bolt
15	13000003001-00	1	Cross Brace
16	13-0725-00010	28	Hex Nut 5/8 -11
17	13-0734-00010	28	Spring Lock Washer 5/8
18	13000003138-00	2	16" Rim
19	13000003006-00	4	Axle Support U-Bolt
20	13000003002-00	1	Frame Axle
21	13-0729-00012	2	Nylon Locknut 3/4 -10
22	13-0702-12080	2	Hex Cap Screw 3/4 x 5-10
23	13000002766-00	2	Draw Pin
24	13000003150-00	-	Hub & Spindle Complete
25	13000003130-00	2	Axle Extension Assembly
26	13000001005-00	2	Tapered Roller Bearing Cone (Inner)
27	13000003133-00	2	Grease Seal
28	13000003135-00	2	Tapered Roller Bearing Cone (Outer)
29	13000003131-00	2	Hub & Spindle
30	13000003136-00	2	Spindle Washer
31	13000003132-00	2	Dust Cap
32	13000003156-00	2	1/2" x 1-1/4" UNF Wheel Bolt

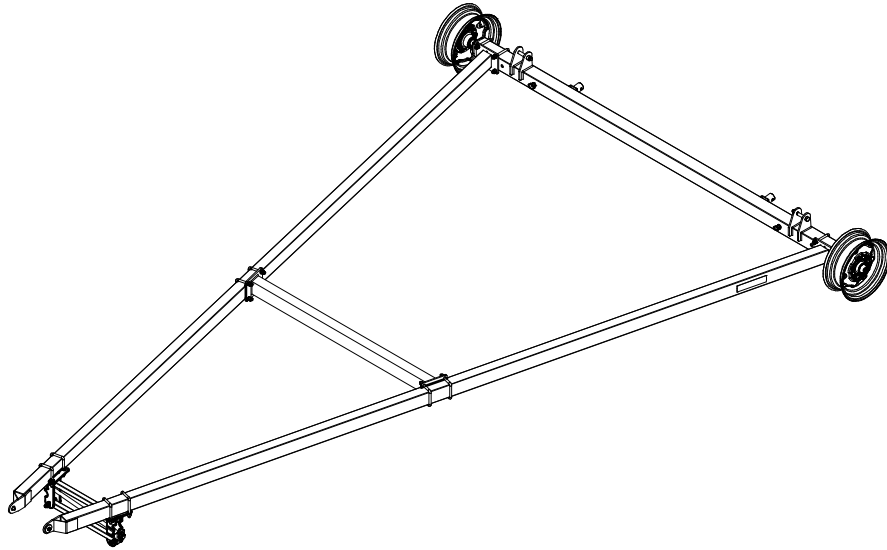


# MAIN FRAME - SLMD10-66



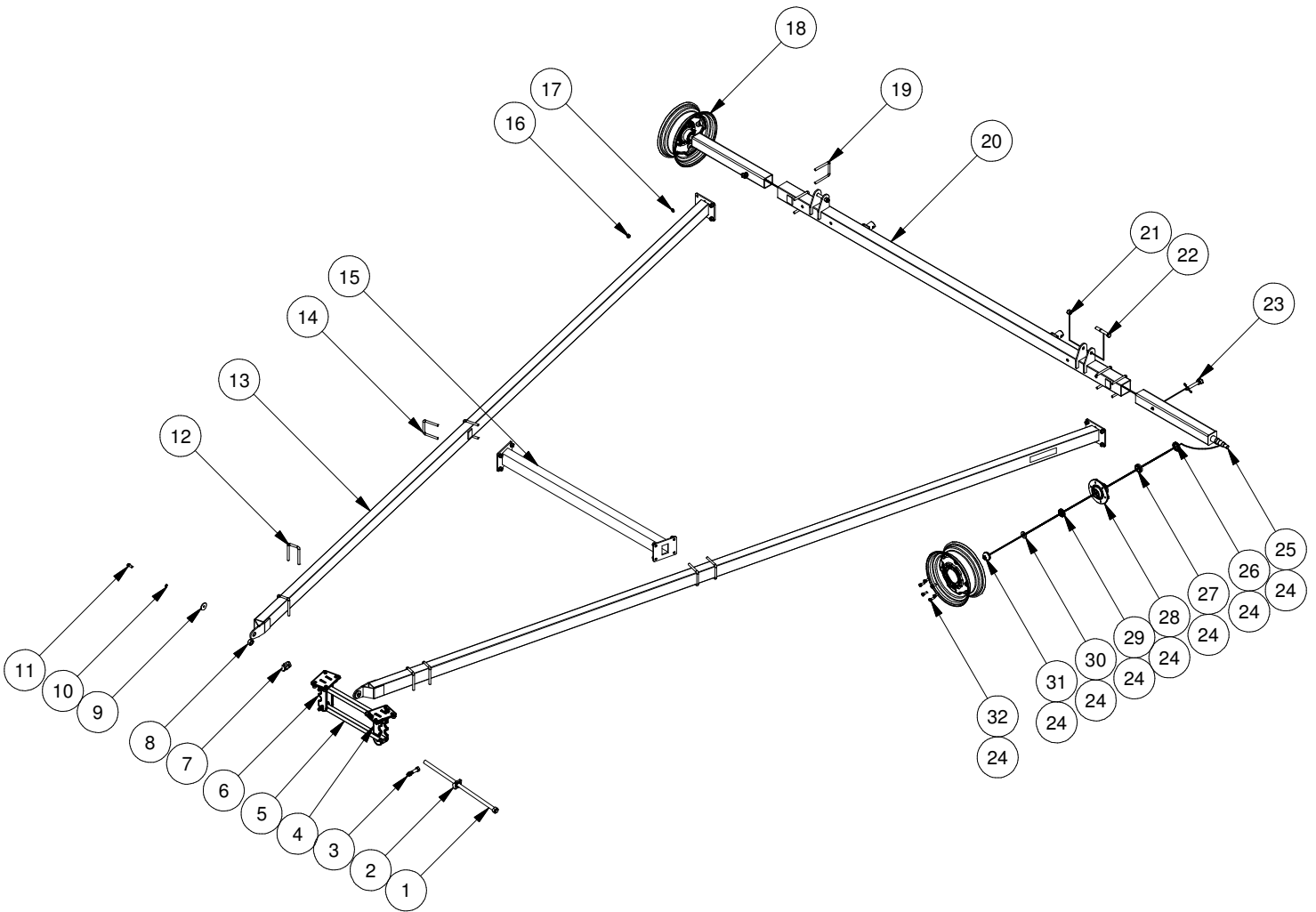
PARTS

# MAIN FRAME - SLMD10-66

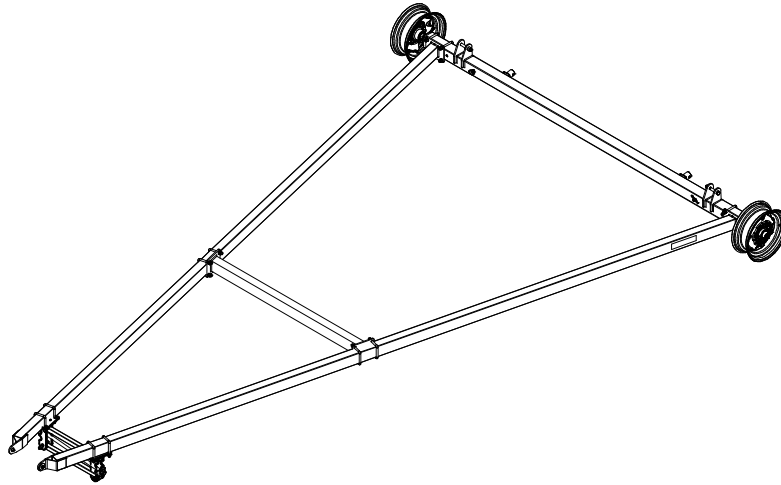


SLMD10 - 66			
REF #	PART #	QUANTITY	DESCRIPTION
1	13000003380-00	1	Threaded Rod Assembly
2	13000003382-00	1	Lock
3	13-0702-12064	4	Hex Cap Screw 3/4 x 4 -10
4	13000003389-00	1	Tie Rod (L.H)
5	13000003379-00	2	Tie Rod
6	13000003390-00	1	Tie Rod (R.H)
7	13000003381-00	1	Threaded Rod Swivel Assembly
8	13-0725-00016	1	Hex Nuts 1" - 8
9	13000003007-00	2	Washer Plated
10	13-0734-00008	2	Spring Lock Washer 1/2
11	13-0702-08020	2	Hex Cap Screw 1/2 x 1-1/4 -13
12	13000003388-00	4	Tie Rod Bracket U-Bolt
13	13000002999-00	2	Main Frame 2000
14	13000003005-00	4	Brace U-Bolt
15	13000003001-00	1	Cross Brace
16	13-0725-00010	28	Hex Nut 5/8 -11
17	13-0734-00010	28	Spring Lock Washer 5/8
18	13000003138-00	2	16" Rim
19	13000003006-00	4	Axle Support U-Bolt
20	13000003003-00	1	Axle
21	13-0729-00012	2	Nylon Locknut 3/4 -10
22	13-0702-12080	2	Hex Cap Screw 3/4 x 5-10
23	13000002766-00	2	Draw Pin
24	13000003150-00	-	Hub & Spindle Complete
25	13000003130-00	2	Axle Extension Assembly
26	13000003133-00	2	Grease Seal
27	13000001005-00	2	Tapered Roller Bearing Cone (Inner)
28	13000003131-00	2	Hub & Spindle
29	13000003135-00	2	Tapered Roller Bearing Cone (Outer)
30	13000003136-00	2	Spindle Washer
31	13000003132-00	2	Dust Cap
32	13000003156-00	2	1/2" x 1-1/4" UNF Wheel Bolt

# MAIN FRAME - SLMD10-72

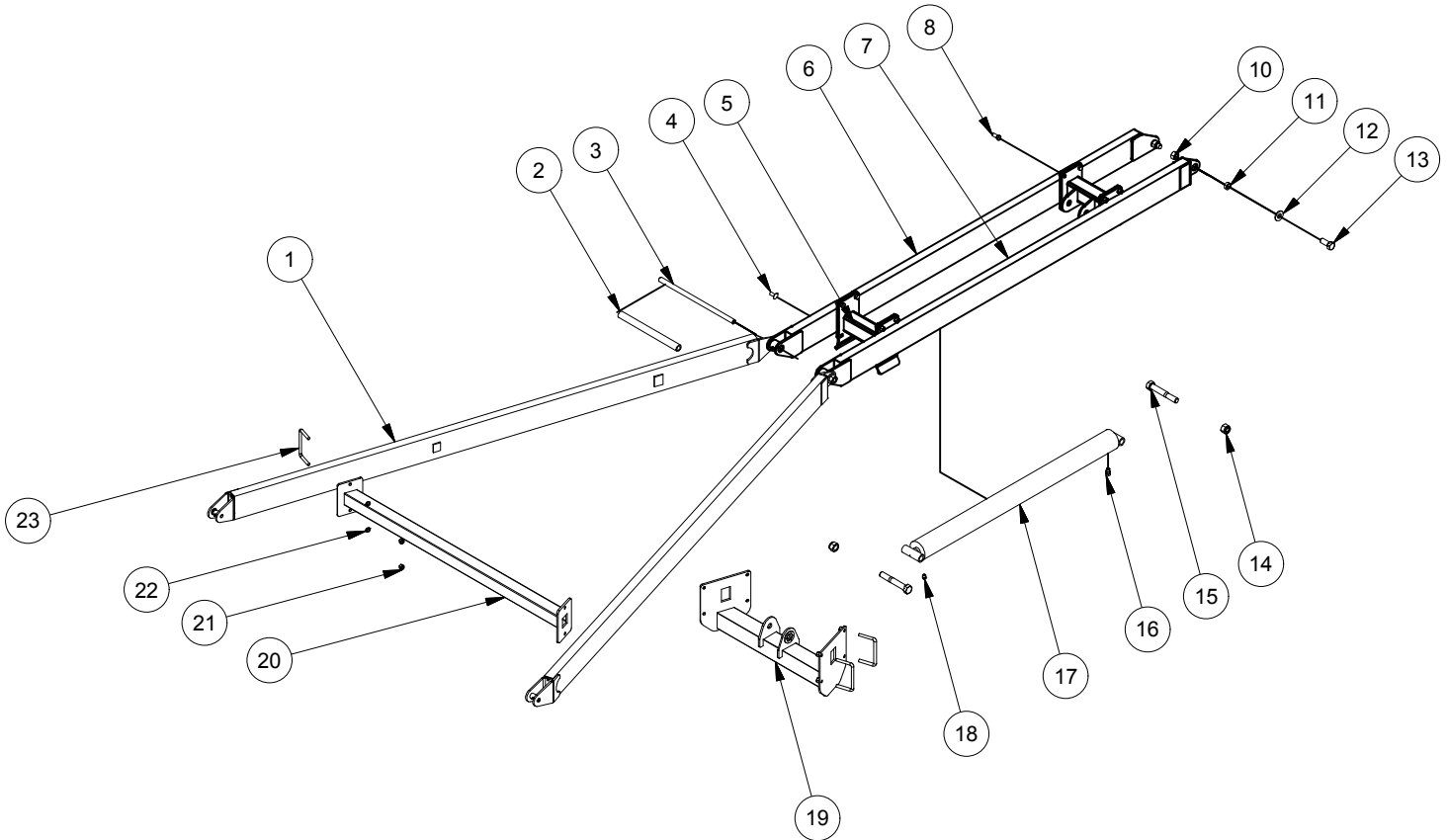


# MAIN FRAME - SLMD10-72



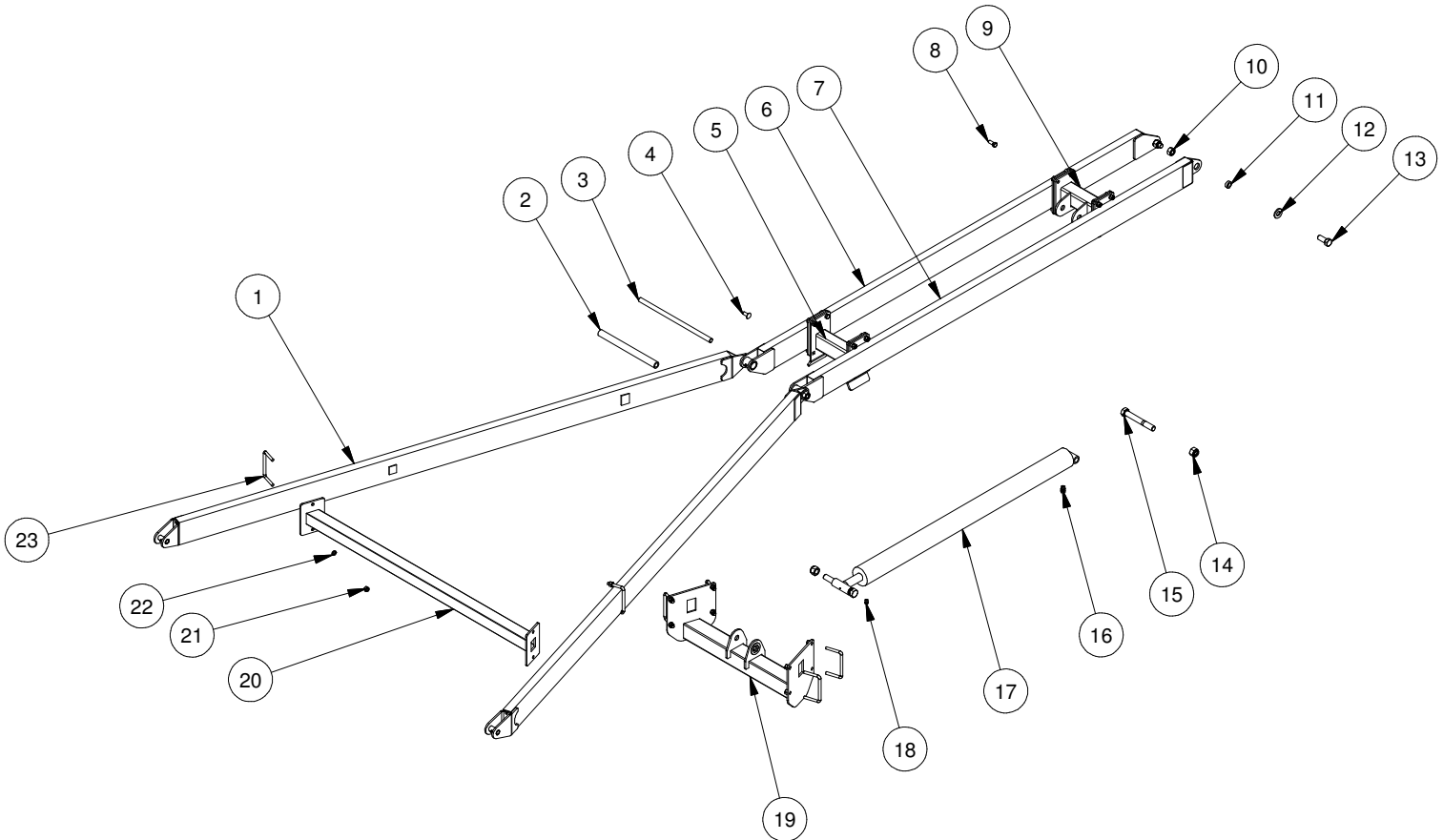
SLMD10 - 72			
REF #	PART #	QUANTITY	DESCRIPTION
1	13000003380-00	1	Threaded Rod Assembly
2	13000003382-00	1	Lock
3	13-0702-12064	4	Hex Cap Screw 3/4 x 4-10
4	13000003389-00	1	Tie Rod (L.H)
5	13000003379-00	2	Tie Rod
6	13000003390-00	1	Tie Rod (R.H)
7	13000003381-00	1	Threaded Rod Swivel Assembly
8	13-0725-00016	1	Hex Nut 1" - 8
9	13000003007-00	2	Washer Plated
10	13-0734-00008	2	Spring Lock Washer 1/2
11	13-0702-08020	2	Hex Cap Screw 1/2 x 1-1/4 -13
12	13000003388-00	4	Tie Rod Bracket U-Bolt
13	13000003000-00	2	Main Frame
14	13000003005-00	4	Brace U-Bolt
15	13000003001-00	1	Cross Brace
16	13-0725-00010	28	Hex Nut 5/8 -11
17	13-0734-00010	28	Spring Lock Washer 5/8
18	13000003138-00	2	16" Rim
19	13000003006-00	4	Axle Support U-Bolt
20	13000003004-00	1	Axle
21	13-0729-00012	2	Nylon Locknut 3/4 -10
22	13-0702-12080	2	Hex Cap Screw 3/4 x 5 -10
23	13000002766-00	2	Draw Pin
24	13000003150-00	-	Hub & Spindle Complete
25	13000003130-00	2	Axle Extension Assembly
26	13000003133-00	2	Grease Seal
27	13000001005-00	2	Tapered Roller Bearing Cone (Inner)
28	13000003131-00	2	Hub & Spindle
29	13000003135-00	2	Tapered Roller Bearing Cone (Outer)
30	13000003136-00	2	Spindle Washer
31	13000003132-00	2	Dust Cap
32	13000003156-00	2	1/2" X 1-1/4" UNF Wheel Bolt

## A - FRAME ASSEMBLY



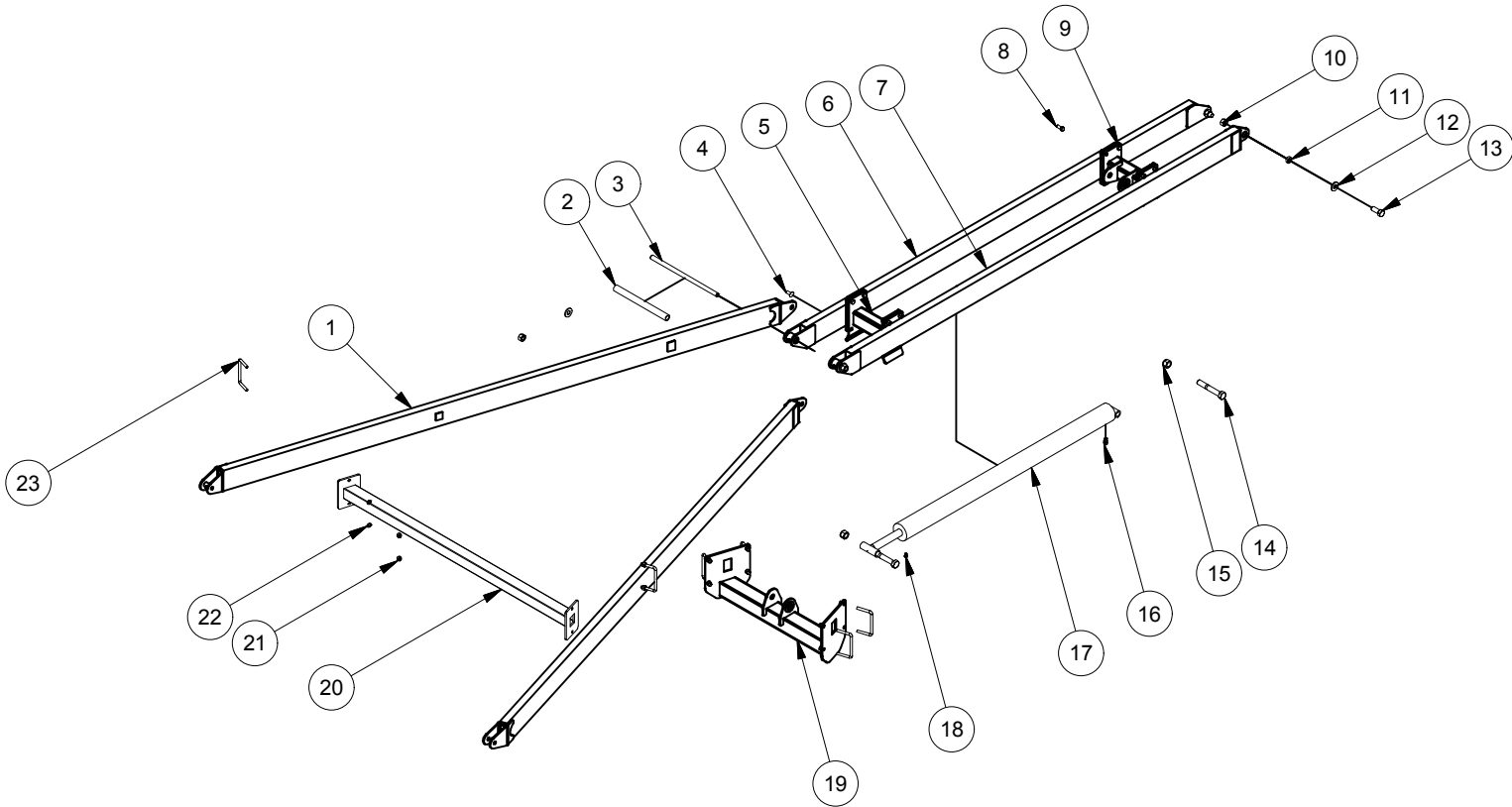
SLMD10 - 59			
REF #	PART #	QUANTITY	DESCRIPTION
1	13000002978-00	2	Frame Lift Bottom w/Grease Fitting
2	13000003325-00	1	Pivot Tube
3	13000003326-00	1	Pivot Rod Assembly
4	13-0709-10024	4	Carriage Bolt 5/8-11 UNC - 1.5
5	13000002993-00	1	Top Lift Frame Cradle
6	13000002987-00	1	Frame Lift Top LH c/w Grease Fitting
7	13000002984-00	1	Frame Lift Top RH c/w Grease Fitting
8	13-0702-10024	12	Hex Cap Screw 5/8-11 UNC - 1.5
9	13000002992-00	1	Top Lift Cylinder Mount
10	13-0725-00016	3	Hex Nut 1-8
11	13000002994-00	2	Bushing
12	13000002995-00	4	Washer Plated
13	13-0702-16040	2	Hex Cap Screw 1-8 UNC - 2.5
14	13-0729-00018	2	Nylock Nut 1 1/8 Std NC
15	13-0702-18136	2	Hex Cap Screw 1 1/8-7 UNC - 7.5
16	13000002997-00	1	Reduced Orifice Fitting
17	13000002774-00	1	Hydraulic Cylinder
18	13000002996-00	1	3/8" NPT Vent
19	13000002981-00	1	Bottom Lift Frame Cylinder Mount
20	13000003107-00	1	Crossbrace
21	13-0725-00010	28	Hex Nut 5/8-11
22	13-0734-00010	28	Spring Lock Washer 5/8
23	13000002990-00	6	U-Bolt

## A - FRAME ASSEMBLY



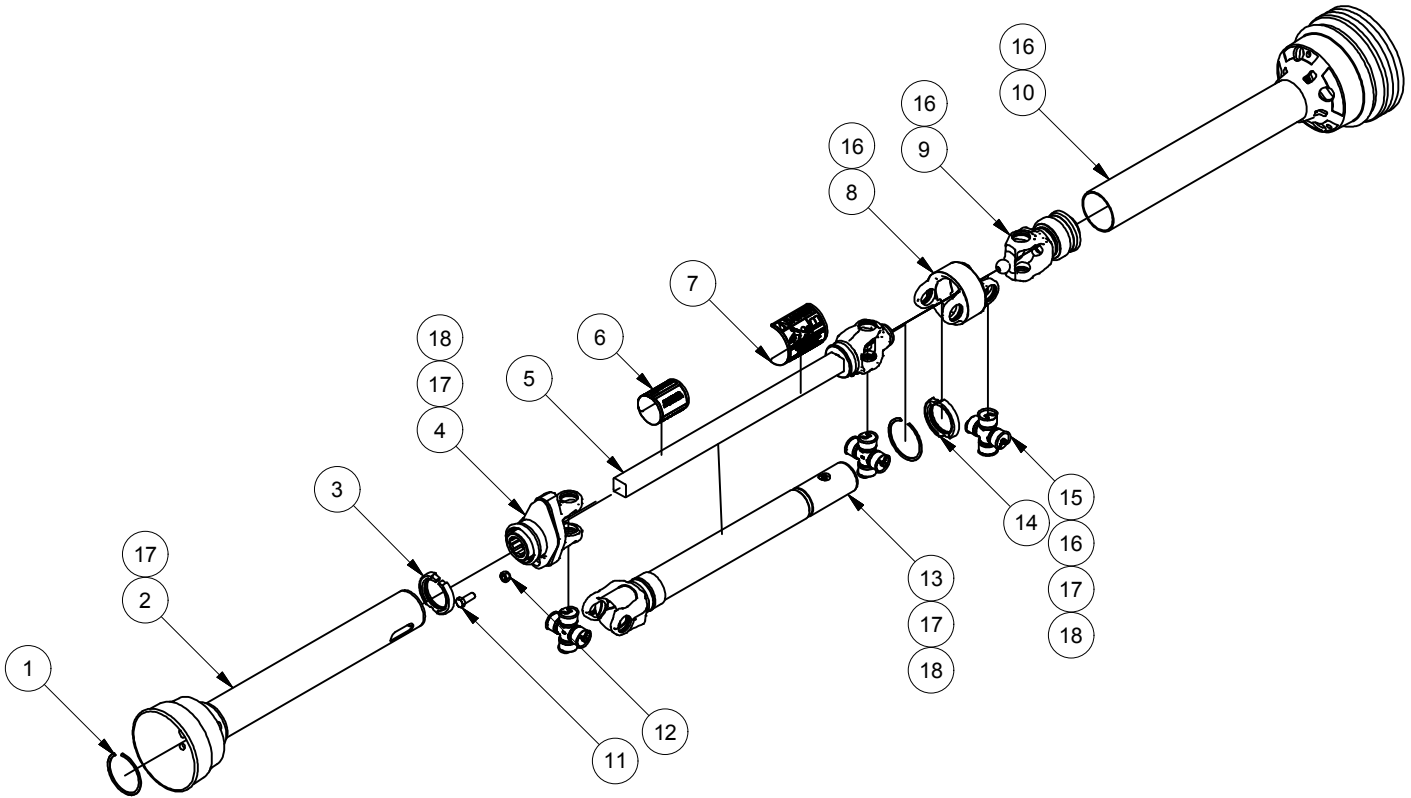
SLMD10 - 66			
REF #	PART #	QUANTITY	DESCRIPTION
1	13000002979-00	2	Frame Lift Bottom w/ Grease Fitting
2	13000003325-00	1	Pivot Tube
3	13000003326-00	1	Pivot Rod Assembly
4	13-0709-10024	4	Carriage Bolt 5/8-11 UNC - 1.5
5	13000002993-00	1	Top Lift Frame Cradle
6	13000002988-00	1	Frame Lift Top LH c/w Grease Fitting
7	13000002985-00	1	Frame Lift Top RH c/w Grease Fitting
8	13-0702-10024	12	Hex Cap Screw 5/8-11 UNC - 1.5
9	13000002992-00	1	Top Lift Cylinder Mount
10	13-0725-00016	3	Hex Nut 1-8
11	13000002994-00	2	Bushing
12	13000002995-00	4	Washer Plated
13	13-0702-16040	2	Hex Cap Screw 1-8 UNC - 2.5
14	13-0729-00018	2	Nylock Nut 1 1/8 Std NC
15	13-0702-18136	2	Hex Cap Screw 1 1/8-7 UNC - 7.5
16	13000002997-00	1	Reduced Orifice Fitting
17	13000002775-00	1	Hydraulic Cylinder
18	13000002996-00	1	3/8" NPT Vent
19	13000002982-00	1	Bottom Lift Cylinder Mount
20	13000003108-00	1	Crossbrace
21	13-0725-00010	28	Hex Nut 5/8-11
22	13-0734-00010	28	Spring Lock Washer 5/8
23	13000002990-00	6	U-Bolt

## A - FRAME ASSEMBLY



SLMD10 - 72			
REF #	PART #	QUANTITY	DESCRIPTION
1	13000002980-00	2	Frame Lift Bottom
2	13000003325-00	1	Pivot Tube
3	13000003326-00	1	Pivot Rod Assembly
4	13-0709-10024	4	Carriage Bolt 5/8-11 UNC - 1.5
5	13000002993-00	1	Top Lift Frame Cradle
6	13000002989-00	1	Frame Lift Top LH c/w Grease Fitting
7	13000002986-00	1	Frame Lift Top RH c/w Grease Fitting
8	13-0702-10024	12	Hex Cap Screw 5/8-11 UNC - 1.5
9	13000002992-00	1	Top Lift Cylinder Mount
10	13-0725-00016	3	Hex Nut 1-8
11	13000002994-00	2	Bushing
12	13000002995-00	4	Washer Plated
13	13-0702-16040	2	Hex Cap Screw 1-8 UNC - 2.5
14	13-0702-18136	2	Hex Cap Screw 1 1/8-7 UNC - 7.5
15	13-0729-00018	2	Nylock Nut 1 1/8 Std NC
16	13000002997-00	1	Reduced Orifice Fitting
17	13000002776-00	1	Hydraulic Cylinder
18	13000002996-00	1	3/8" NPT Vent
19	13000002983-00	1	Bottom Lift Frame Cylinder Mount
20	13000003109-00	1	Crossbrace
21	13-0725-00010	28	Hex Nut 5/8-11
22	13-0734-00010	28	Spring Lock Washer 5/8
23	13000002990-00	6	U-Bolt

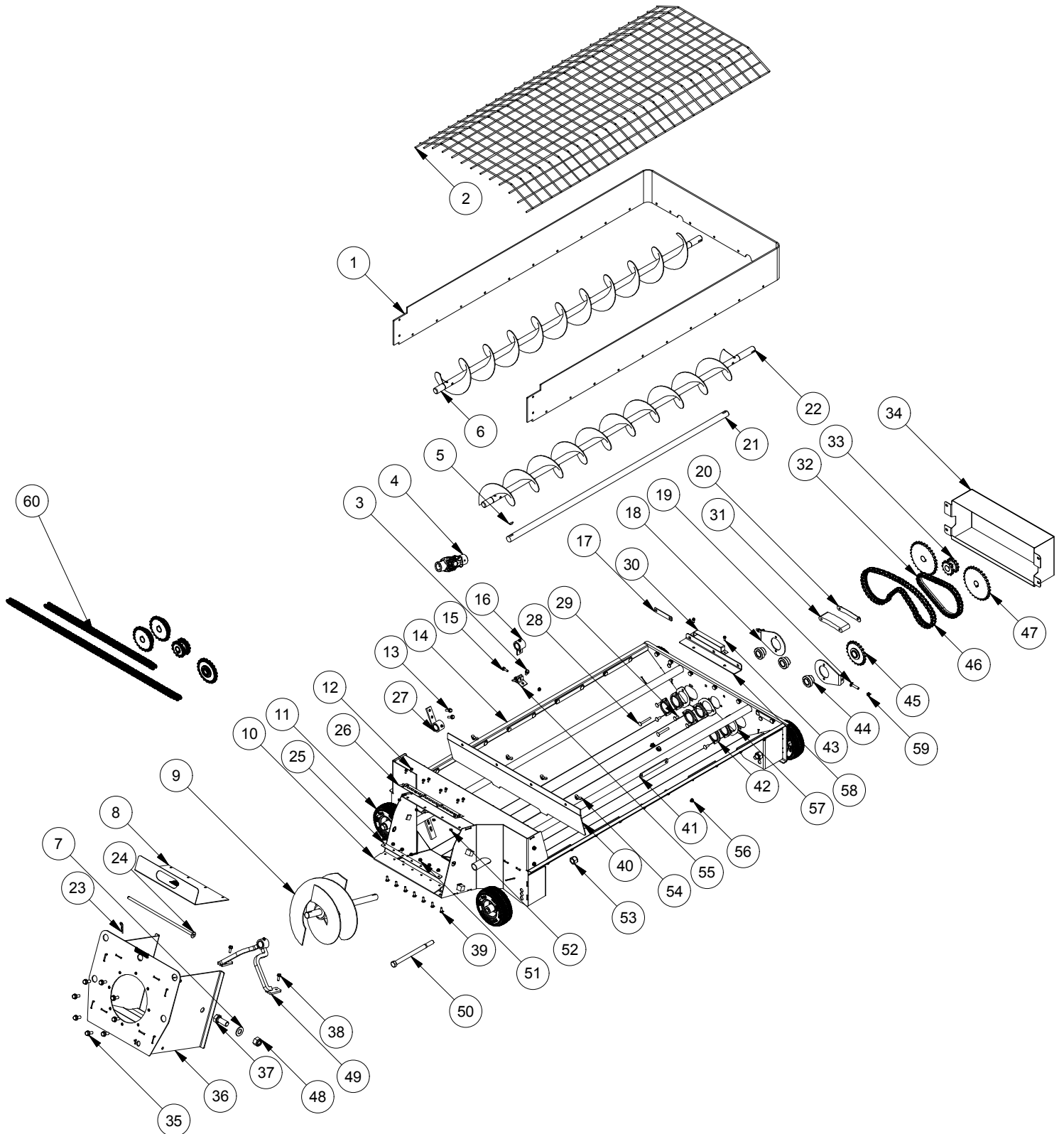
# PTO SHAFT ASSEMBLY



SLMD10			
REF #	PART #	QUANTITY	DESCRIPTION
1	13000002419-00	2	Bearing Retainer
2	13000002424-00	1	Weasler Plastic Shield Inner Guard
3	13000002425-00	1	PTO Nylon Bearing
4	13000002428-00	1	PTO Ball Shear Assembly
5	13000002417-00	1	Yoke & Shaft
6	13000002423-00	1	Safety Sign
7	13000002421-00	1	Safety Sign
8	13000002416-00	1	Joint Housing
9	13000002411-00	1	Yoke & Ball Assembly - Weasler
10	13000002420-00	1	Weasler Plastic Shield Outer Guard
11	13000002826-00	1	PTO Shear Bolt - GR 5
12	13000002430-00	1	5/16" Nut
13	13000002422-00	1	Yoke & Tube - Weasler
14	13000002418-00	1	Nylon Bearing
15	13000002415-00	3	Cross & Bearing
16	13000002414-00	1	Joint, Shaft & Guard Assembly - Includes Items 8, 9, 10, 15
17	13000002426-00	1	Joint, 1/2 Assembly & Guard - Includes Items 2, 4, 13, 15
18	13000002427-00	1	Joint Tube & 1/2 Assembly - Includes Items 4, 13, 15
19	13000002410-00	1	Complete PTO Shaft Assembly



# HOPPER - LOWER PROFILE



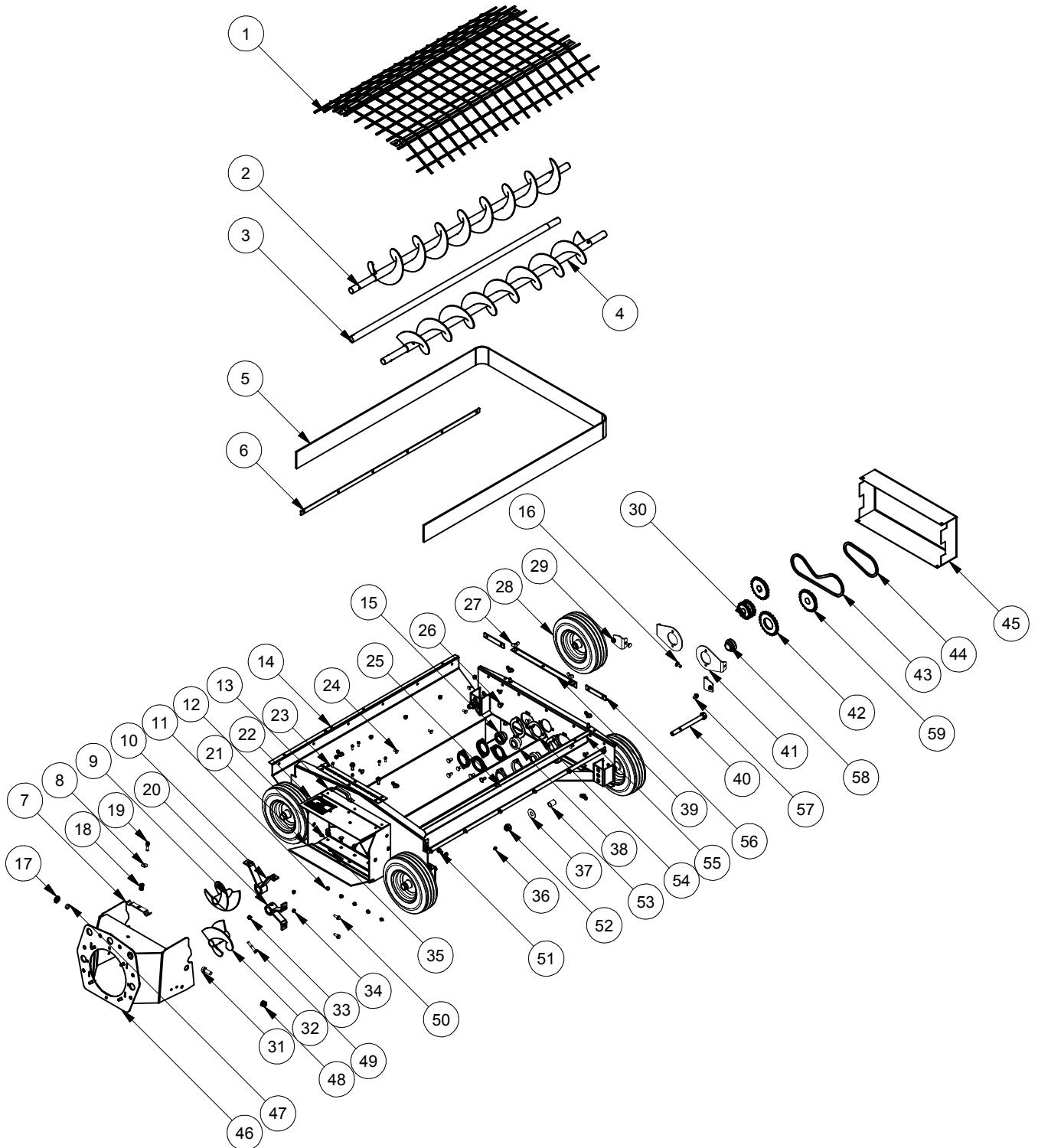
## PARTS

## HOPPER - LOWER PROFILE

SLMD10

REF #	PART #	QUANTITY	DESCRIPTION
1	1300004683-00	1	Rubber
2	1300004675-00	1	Mesh
3	13-0712-06012	4	Flange Lock Bolt 3/8 x 3/4-16
4	1300003724-00	1	12EBL Universal Joint - 1 1/4" RND
5	13-0740-00808	2	Woodruff Key, 1/4" x 1"
6	1300004666-00	1	Flight RH
7	13-0736-00016	2	Flat SAE Washer 1"
8	1300004696-00	1	Inspection Door
9	1300004664-00	1	Flight - Throat
10	1300004685-00	1	Inner Throat Wiper
11	1300004686-00	4	Tire c/w Rim
12	13-0712-04008	8	Flange Lock Bolt 1/4 x 1/2-20
13	13-0712-06020	4	Flange Lock Bolt 3/8 x 1-1/4-16
14	1300004670-00	1	Pan
15	13-0712-05016	1	Flange Lock Bolt 5/16 x 1-18
16	1300004669-00	1	Drive Shaft Holder
17	1300004678-00	4	Bracket Rubber Short
18	1300003391-00	2	Plate Chain Tension
19	13-0709-06032	2	Carriage Bolt 3/8 x 2-16
20	1300004680-00	1	Chain Guide Plate
21	1300004681-00	1	Drive Shaft
22	1300004665-00	1	Flight LH
23	13-0739-02040	1	1/8" x 2 1/2" Hair Pin
24	1300004265-00	1	Pin Lock
25	1300004679-00	1	Wiper Plate
26	1300004682-00	1	Hinge Throat
27	1300004663-00	2	Hanger
28	13-0709-06048	2	Carriage Bolt 3/8 x 3-16
29	13-0709-06016	37	Carriage Bolt 3/8 x 1-16
30	1300004672-00	1	Tie Down
31	1300004684-00	1	Chain Guide
32	1300004709-00	1	Chain - 60-1R-40 c/w Connector Link
33	1300004705-00	1	Sprocket Drive - c/w S.S. - Sprocket Kit
34	1300004668-00	1	Guard Drive
35	13-0712-08020	8	Flange Lock Bolt 1/2 x 1-1/4-13
36	1300004704-00	1	Throat
37	13-0702-16040	2	Hex Cap Screw 1 x 2-1/2-8
38	13-0712-06016	2	Flange Lock Bolt 3/8 x 1-16
39	13-0709-05016	7	Carriage Bolt 5/16 x 1-18
40	1300004671-00	1	Boil Cover
41	1300004677-00	10	Plate - Bracket Rubber Long
42	1300001239-00	6	Bearing Flangette
43	13-0712-04010	2	Flange Lock Bolt 1/4 x 5/8-20
44	1300002316-00	3	Flight Bearing
45	1300004690-00	1	Idler
46	1300004708-00	1	Chain - 60-1R-70 c/w Connector Link
47	1300004706-00	2	Sprocket Flight c/w S.S. -
48	13-0729-00016	2	Nylon Locknut 1"-8
49	1300004667-00	1	Hanger Throat
50	13-0702-12176	4	Hex Cap Screw 3/4 x 11-10
51	13-0731-00005	8	Flange Lock Nut 5/16-18
52	13-0731-00004	8	Flange Lock Nut 1/4-20
53	13-0729-00014	4	Nylon Locknut 7/8-9
54	13-0732-00006	8	Wing Nut
55	1300004673-00	2	Leg
56	13-0731-00006	39	Flange Lock Nut 3/8-16
57	1300002751-00	3	Sealing Plate
58	1300004674-00	1	Bracket Hold Down
59	13-0730-00006	2	Stover Locknut 3/8-16
60	1300004987-00	1	Kit - Sprocket Drive B

# HOPPER - 60"

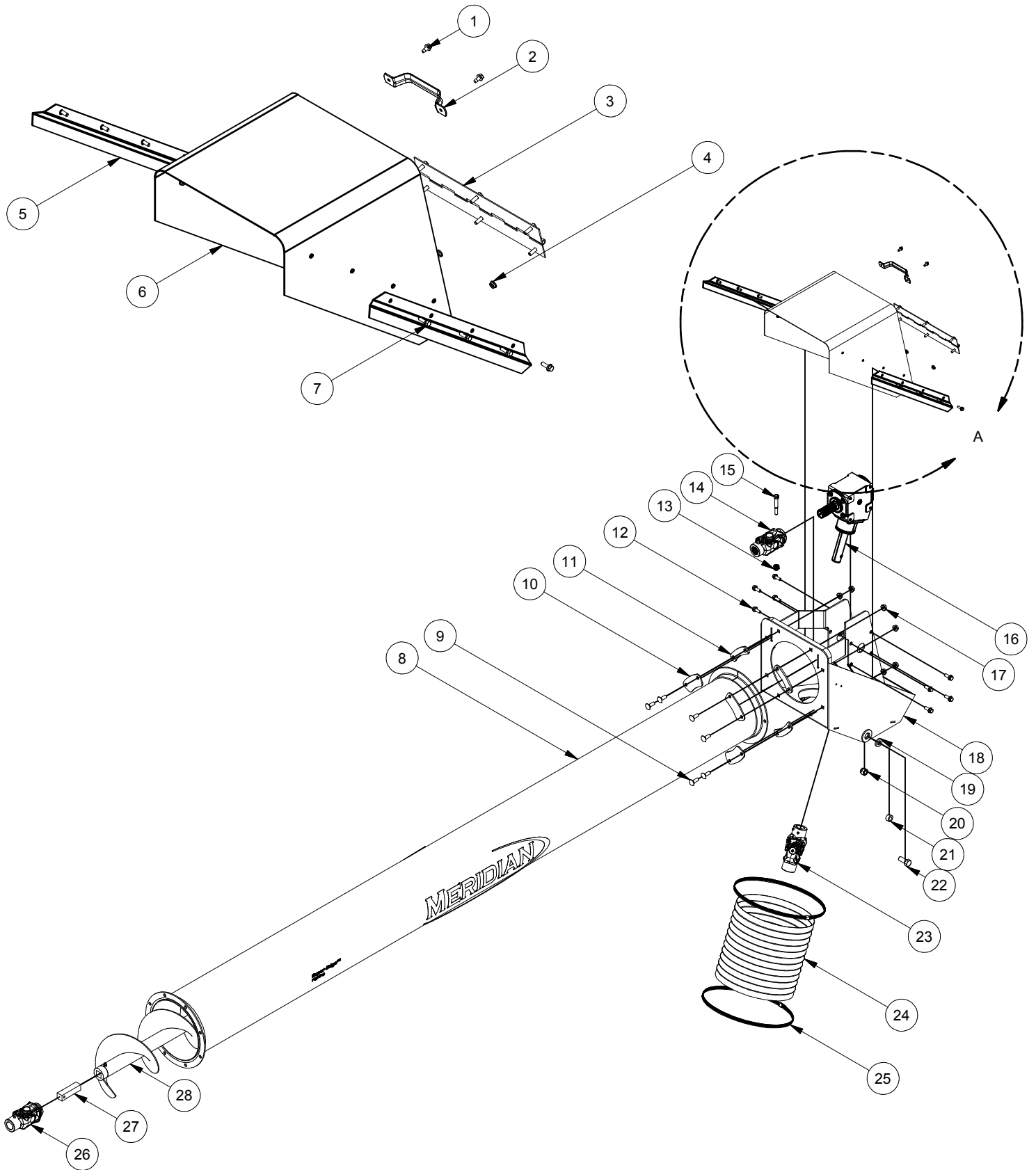


## PARTS

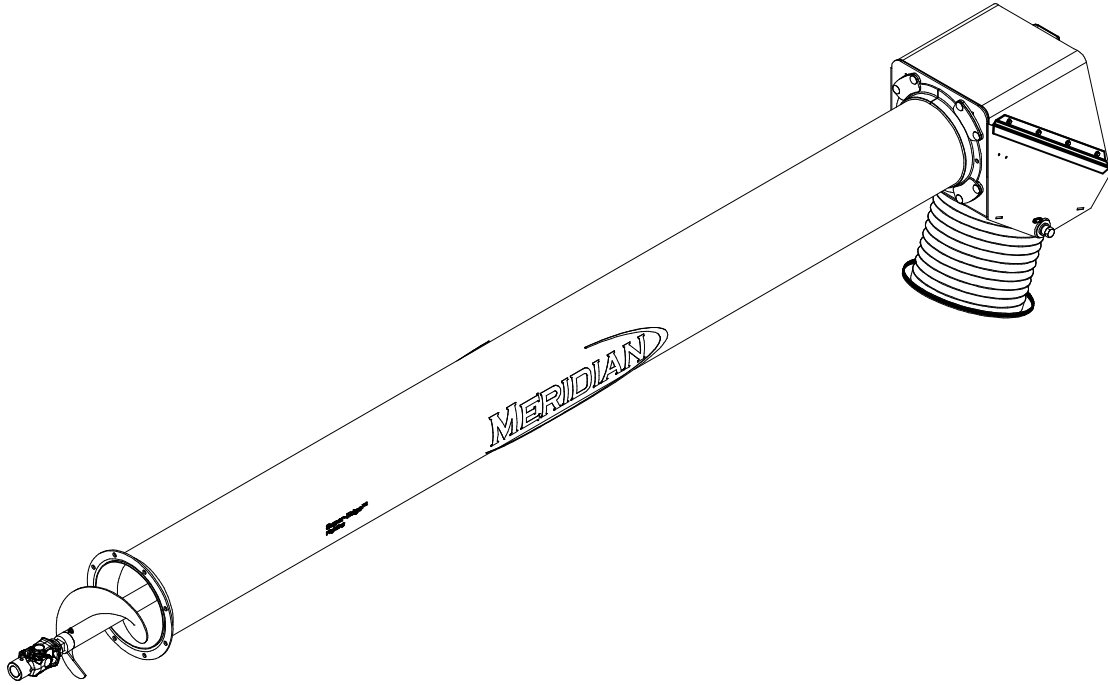
## HOPPER - 60"

PARTS LIST OF PN# 13001000016			
REF #	PART #	QUANTITY	DESCRIPTION
1	13000003047-00	1	Guard Hopper
2	13000003045-00	1	Flight RH
3	13000003515-00	1	Drive Shaft
4	13000003046-00	1	Flight LH
5	13000003043-00	1	Hopper Rubber
6	13000003048-00	2	Long Rubber Bracket
7	13000003056-00	1	Inspection Door Closure
8	13000003058-00	1	Door Closure Washer
9	13000003157-00	1	Flight Extension RH
10	13000003041-00	1	Holder Bushing Drive
11	13073000005	5	Nylock Nut 5/16-18 UNC Steel, Mild
12	13000004738-00	1	Mount Plate
13	13000003029-00	1	Handle
14	13071204012	8	Flange Lock Bolt 1/4-20 UNC X 0.75
15	13000002316-00	2	Flight Bearing
16	13070906016	12	Carriage Bolt 3/8-16 UNC x 1
17	13073600010	2	Flat Washer 5/8
18	13000003057-00	1	Door Closure Spring
19	13070206024	1	Hex Cap Screw 3/8-16 UNC X 1.5
20	13000003044-00	2	Holder Bushing Assembly
21	13000004742-00	1	Rubber
22	13000003038-00	1	Inspection Door
23	13000003039-00	1	Inspection Door Hinge
24	13070905012	21	Carriage Bolt 5/16-18 UNC x 0.75
25	13000001239-00	6	Bearing Flangette
26	13070906012	3	Carriage Bolt 3/8-16 UNC x 0.75
27	13073200006	8	Wing Nut
28	13000003239-00	4	Wheel c/w Tire
29	13000003392-00	2	Plate Chain Tension Holder
30	13000002744-00	1	Sprocket - 50A16 - 1.125" Hardened
31	13070210028	2	Hex Cap Screw 5/8-11 UNC X 1.75
32	13000003158-00	1	Flight Extension LH
33	13073000006	4	Nylock Nut 3/8-16 UNC
34	13073100006	17	Flange Bolt 3/8-16 UNC
35	13073100004	8	Flange Nut 1/4-20 UNC
36	13073100005	20	Flange Nut 5/16-18 UNC
37	13073500012	4	Flat Washer 3/4
38	13000002777-00	1	Drive Bearing
39	13000003050-00	1	Mounting Bracket
40	13070212136	4	Hex Cap Screw 3/4-10 UNC X 8.5 Steel, Mild
41	13000003391-00	2	Plate Chain Tension
42	13000003052-00	1	Reverse Sprocket
43	13000003054-00	1	Chain 50-1R-56
44	13000003055-00	1	Chain 50-1R-35
45	13000003051-00	1	Drive Guard
46	13000003037-00	1	Pivot
47	13000003261-00	2	Pivot Spacer
48	13073000010	2	Nylock Nut 5/8-11 UNC
49	13070206036	2	Hex Cap Screw 3/8-16 UNC X 2.25
50	13071206016	6	Flange Bolt 3/8-16 UNC X 1
51	13071205012	4	Flange Bolt 5/16-18 UNC X 0.75
52	13073000012	4	Nylock Nut 3/4-16 UNF
53	13000003061-00	4	Wheel Spacer
54	13000002751-00	3	Sealing Plate
55	13000003036-00	1	Hopper
56	13000003049-00	2	Short Rubber Bracket
57	13071206012	2	Flange Bolt 3/8-16 UNC X 0.75
58	13000003053-00	1	LH Flight Bearing
59	13000002750-00	2	Sprocket - 50B22 - 1.25" hardened

# FEED AUGER HEAD AND TUBE



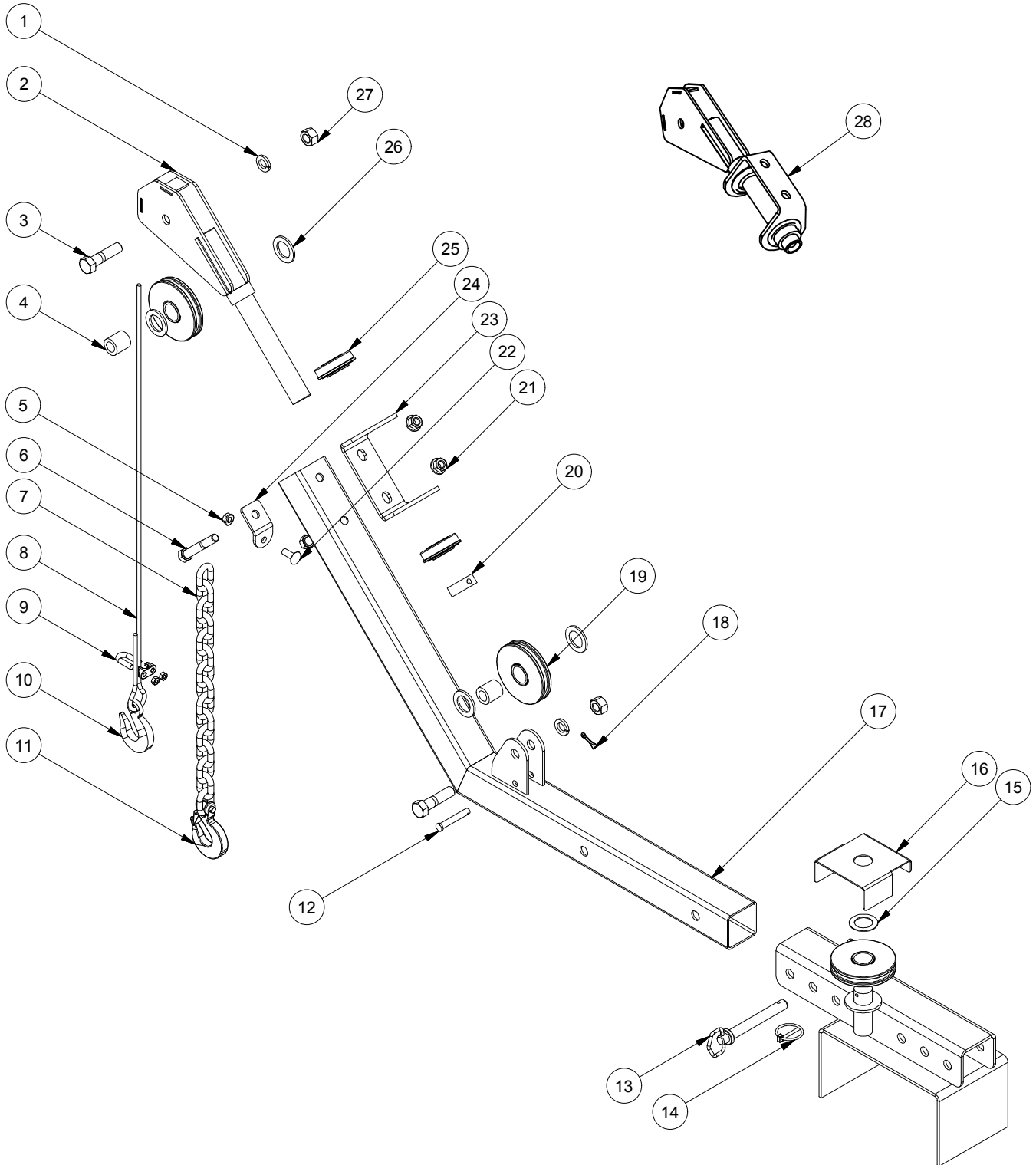
# FEED AUGER HEAD AND TUBE



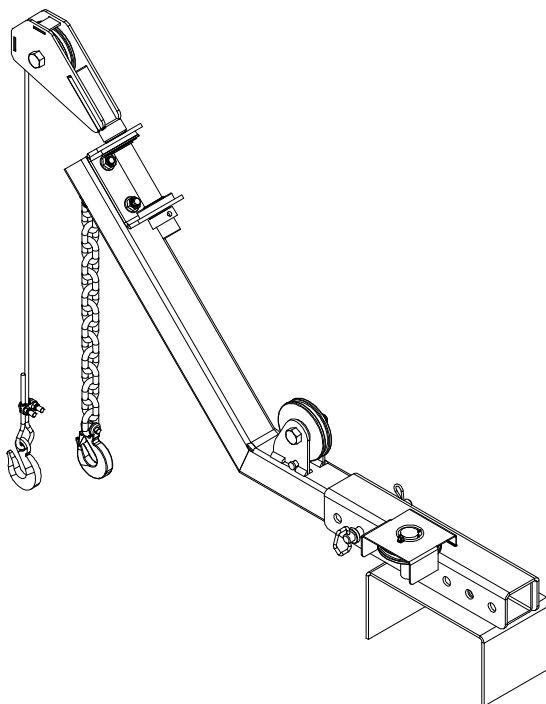
## PARTS LIST OF PN# 13001000013

REF #	PART #	QUANTITY	DESCRIPTION
1	13070604008	2	Self Tapping Screw 1/4-20 UNC X 0.5
2	13000003029-00	1	Handle
3	13000003032-00	1	Cover Hinge
4	13073100004	14	Flange Lock Nut 1/4-20
5	13000003030-00	2	Rain Guard (LH & RH)
6	13000003028-00	1	Head Cover Assembly
7	13071204012	14	Flange Lock Bolt 1/4-20 UNC X 0.75
8	13000003021-00	1	Tube Feed
9	13070907020	8	Carriage Bolt 7/16-14 UNC x 1.25
10	13000003025-00	4	Swivel Top Plate
11	13000003024-00	4	Bottom Spacer
12	13071206016	8	Flange Lock Bolt 3/8-16 UNC X 1
13	13072900007	1	Flange Lock Nut 7/16-14 UNC
14	13000003033-00	1	12EBL Universal Joint
15	13070207048	1	Hex Cap Screw 7/16-14 UNC X 3
16	13000002946-00	1	Gear Box
17	13073100007	8	Flange Lock Nut 7/16-14 UNC
18	13000003023-00	1	Head
19	13073600010	2	Flat Washer 5/8
20	13073000010	2	Stover Locknut 5/8-11 UNC
21	13000003034-00	2	Pivot - Bushing
22	13070210024	2	Hex Cap Screw 5/8-11 UNC X 1.5
23	13000002710-00	1	12N - U -Joint
24	13000003026-00	1	Rubber Tubbing
25	13000003027-00	2	14" Dia Hose Clamp
26	13000003128-00	1	12P Universal
27	13000003035-00	1	Stub
28	13000003022-00	1	Flight

# LIFT ARM



## LIFT ARM

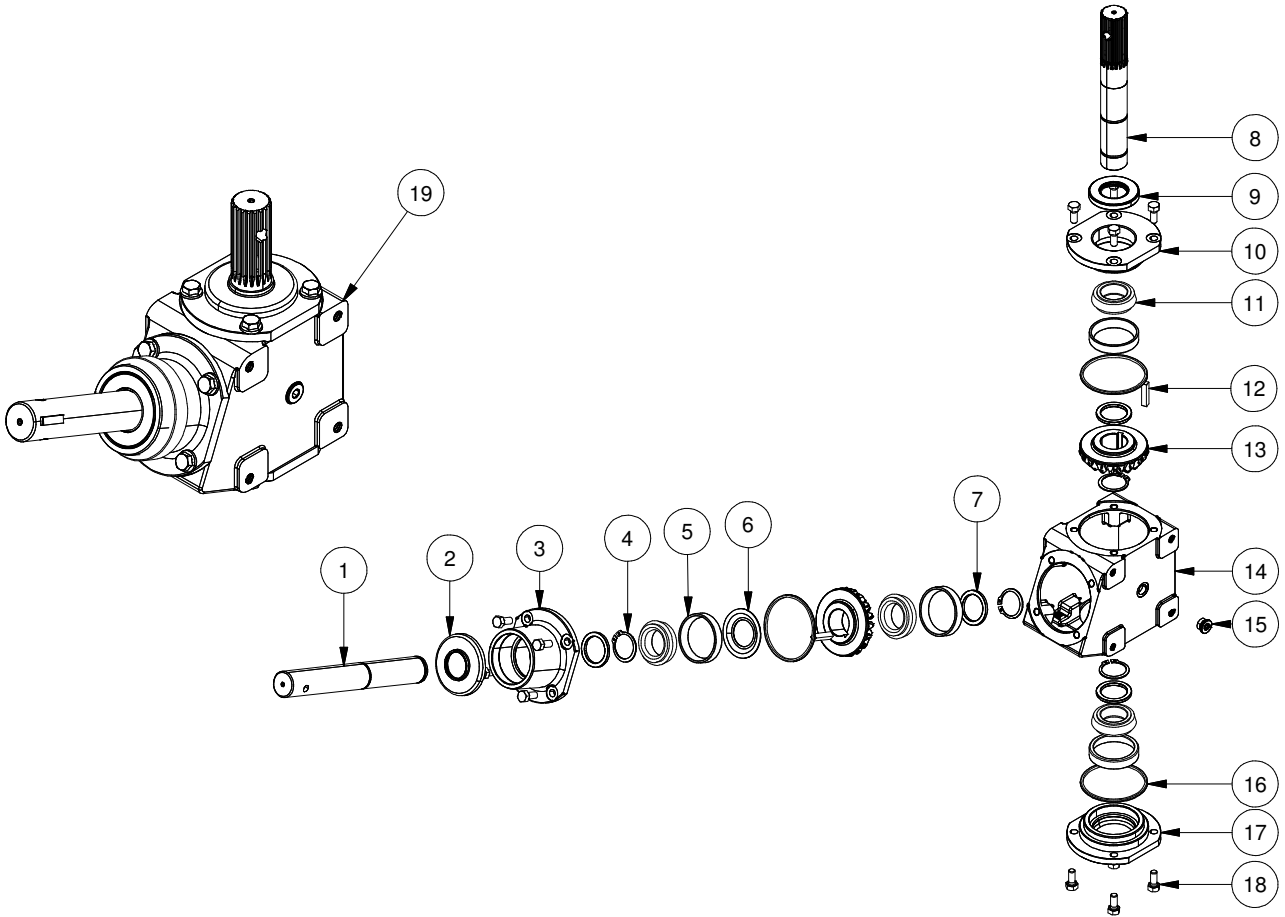


## SLMD10

REF #	PART #	QUANTITY	DESCRIPTION
1	13-0734-00010	2	Spring Lock Washer 5/8"
2	13000003148-00	1	Weldment - Pivot
3	13-0702-10040	2	Hex Cap Screw 5/8 x 2-1/2-11
4	13000003149-00	2	Bushing
5	13-0731-00006	1	Flange Lock Nut 3/8-16
6	13-0702-08056	2	Hex Cap Screw 1/2 x 3-1/2-13
7	13000003155-00	1	Lift Arm Safety Chain
8	13000002796-00	1	Hopper Lift Cable
9	13000001060-00	1	1/4" Galv. Cable Clamp
10	13000002700-00	1	Lift Arm Hook
11	13000003154-00	1	L/A Safety Chain Hook
12	13000001387-00	1	Clevis Pin 3/8 x 2-3/8
13	13000002699-00	1	Draw Pin
14	13000003153-00	1	Lynch Pin
15	13-0745-28018	1	Machine Bushing
16	13000003152-00	1	L/A Saddle Roller Cover
17	13000003144-00	1	Lift Arm
18	13-0737-05024	1	Cotter Pin 5/32 x 3/4
19	13000001782-00	3	Cable Roller
20	13000003151-00	1	Lift Arm Pivot Collar
21	13-0731-00008	2	Flange Lock Nut 1/2-13
22	13-0709-06016	1	Carriage Bolt 3/8 x 1-16
23	13000003146-00	1	Lift Arm Pivot Base Plate
24	13000003145-00	1	Lift Arm Safety Chain Lug
25	13000003147-00	2	L/A Pivot Roller Bearing
26	13-0747-28018	4	Machine Bushing
27	13-0725-00010	2	Hex Nut 5/8-11
28	13001000044	1	Pivot - Lift Arm

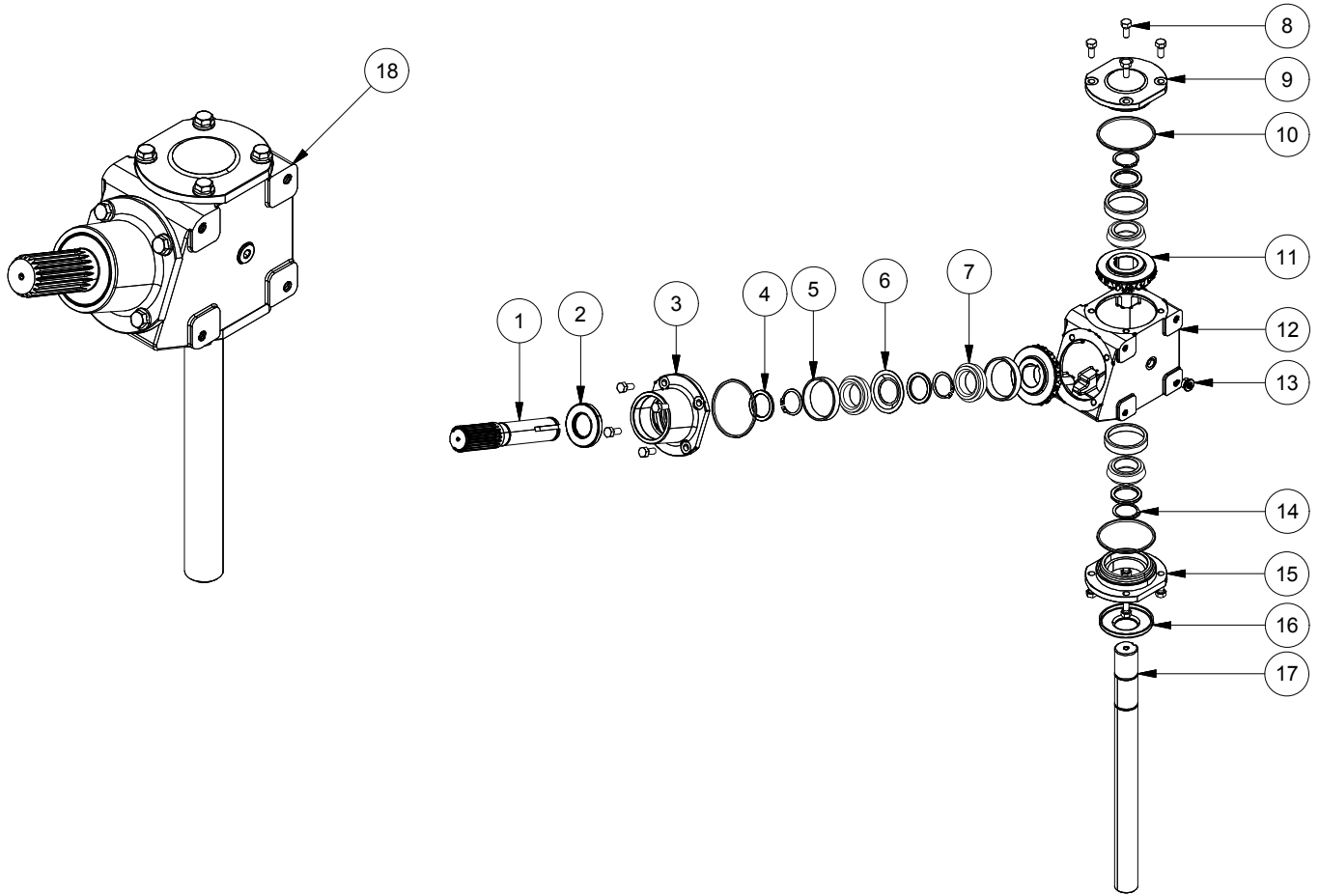


# GEAR BOX ASSEMBLY - TOP



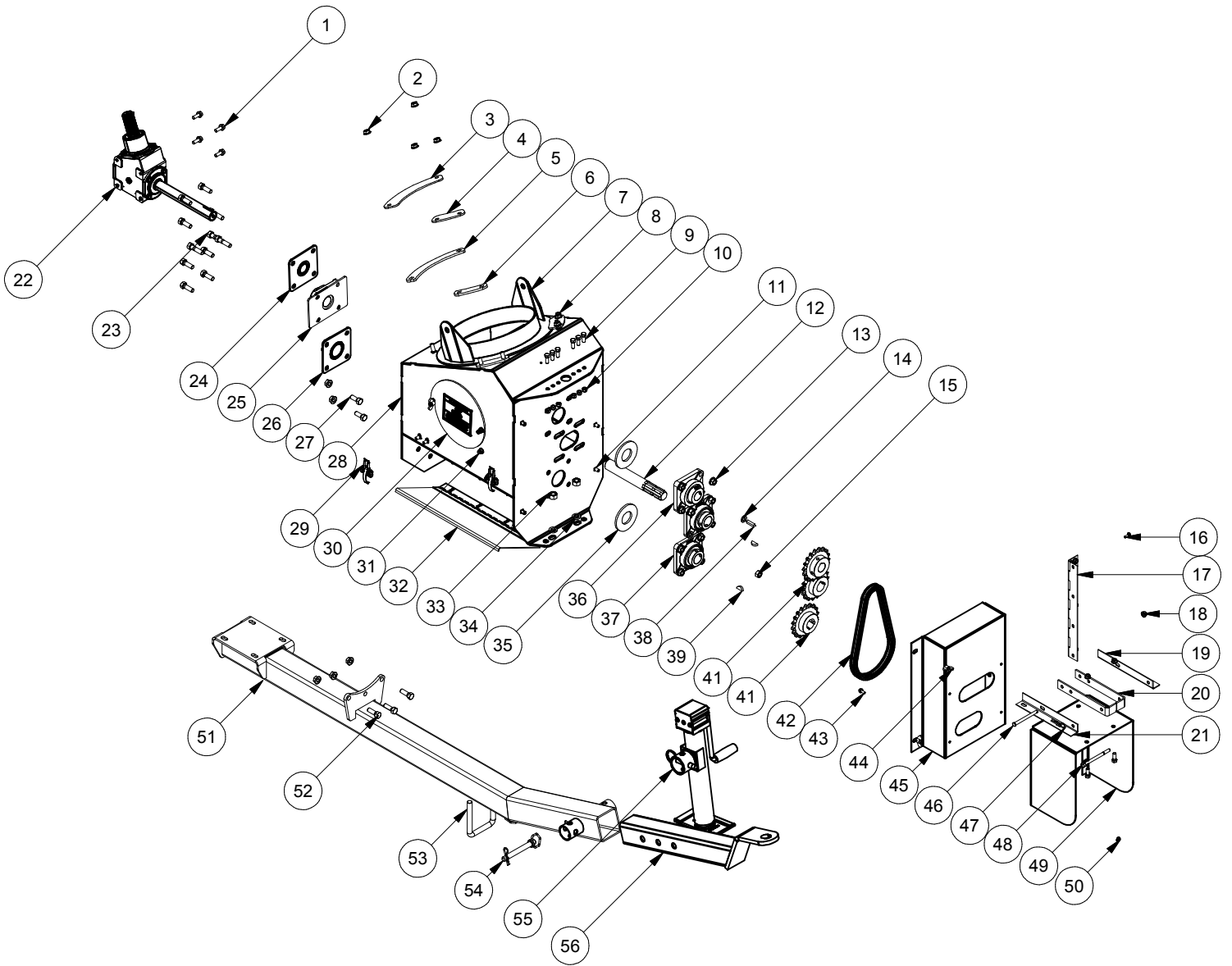
SLMD10			
REF #	PART #	QUANTITY	DESCRIPTION
1	13000002824-00	1	Shaft - Input
2	13000002822-00	1	Seal - Input
3	13000002800-00	1	Quill
4	13000002805-00	4	Snap Ring
5	13000001006-00	4	Tapered Roller Bearing Cup (Inner)
6	13000002807-00	1	Gasket
7	13000002804-00	4	Washer Gear Box
8	13000002947-00	1	Shaft - Output
9	13000002821-00	1	Shield - Output
10	13000002801-00	1	Gear Box Cover
11	13000001005-00	4	Tapered Roller Bearing Cone (Outer)
12	13000002819-00	2	Keystock 1/4 x 1/4 x 1 1/4
13	13000002808-00	2	Beveled Gear
14	13000002799-00	1	Gear Box Case
15	13000002816-00	2	NPT Pipe Plug
16	13000002832-00	3	O-Ring
17	13000003250-00	1	Capped Cover
18	13-0702-05012	12	Hex Cap Screw 5/16 x 3/4-18
19	13000002946-00	1	Complete Top Gear Box Assembly
-	13000002813-00	As Req'd	Shim 0.010"
-	13000002812-00	As Req'd	Shim 0.0075"
-	13000002811-00	As Req'd	Shim 0.005"

# GEAR BOX ASSEMBLY - BOTTOM



SLMD10			
REF #	PART #	QUANTITY	DESCRIPTION
1	13000002962-00	1	Shaft - Pinion Output
2	13000002825-00	1	Shield - Output
3	13000002800-00	1	Quill
4	13000002804-00	4	Washer Gear Box
5	13000001006-00	4	Tapered Roller Bearing Cup (Inner)
6	13000002820-00	1	Washer - Gear Box
7	13000001005-00	4	Tapered Roller Bearing Cone (Outer)
8	13-0702-05012	12	Hex Cap Screw 5/16 x 3/4-18
9	13000003250-00	1	Capped Cover
10	13000002832-00	3	O-Ring
11	13000002808-00	2	Beveled Gear
12	13000002799-00	1	Gear Box Case
13	13000002816-00	2	NPT Pipe Plug
14	13000002805-00	4	Snap Ring
15	13000002801-00	1	Gear Box Cover
16	13000002822-00	1	Seal - Input
17	13000002818-00	1	Shaft - Input
18	13000002963-00	1	Complete Bottom Gear Box Assembly
-	13000002811-00	As Req'd	Shim 0.005"
-	13000002812-00	As Req'd	Shim 0.0075"
-	13000002813-00	As Req'd	Shim 0.010"

# BOOT

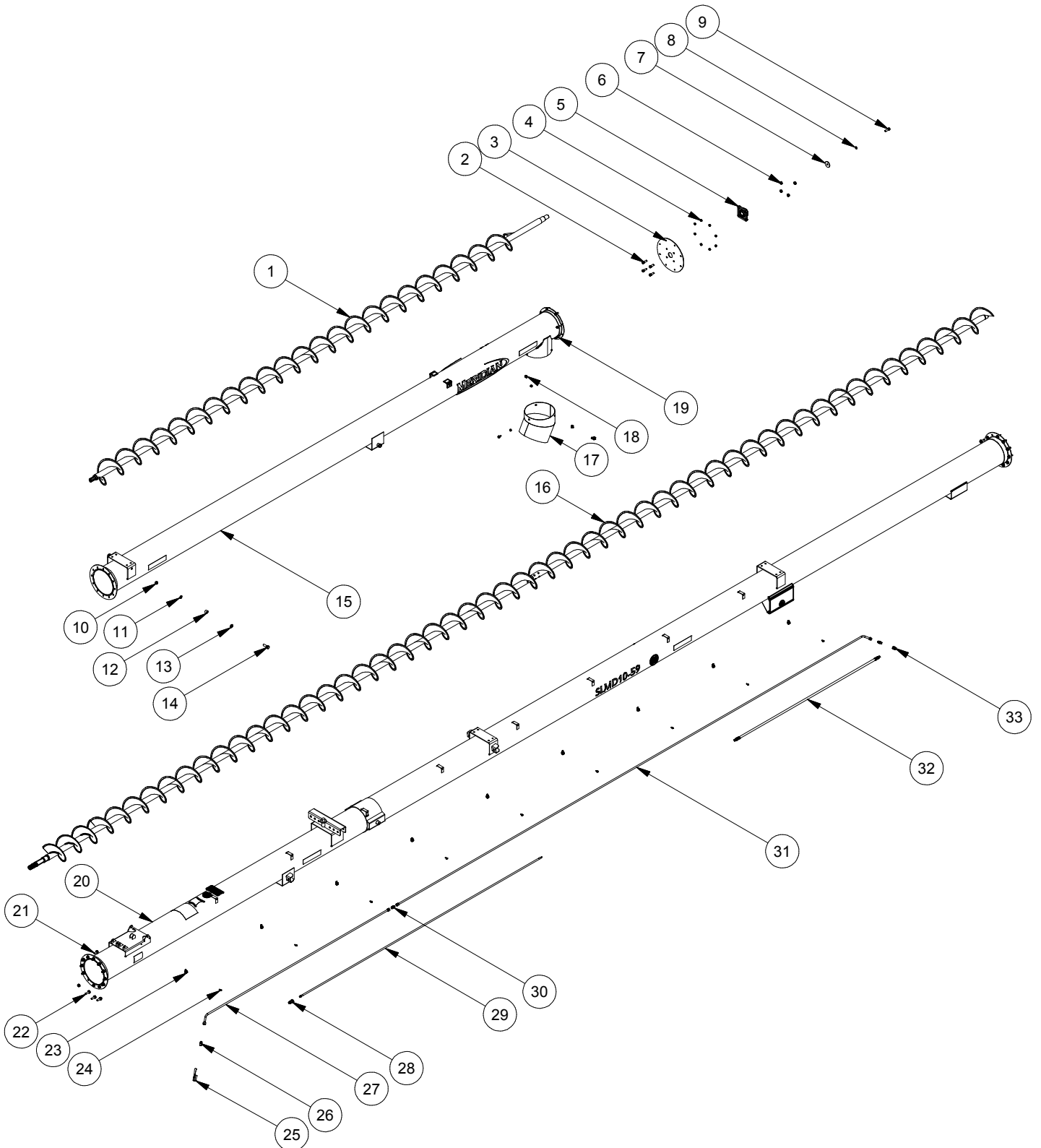


## PARTS

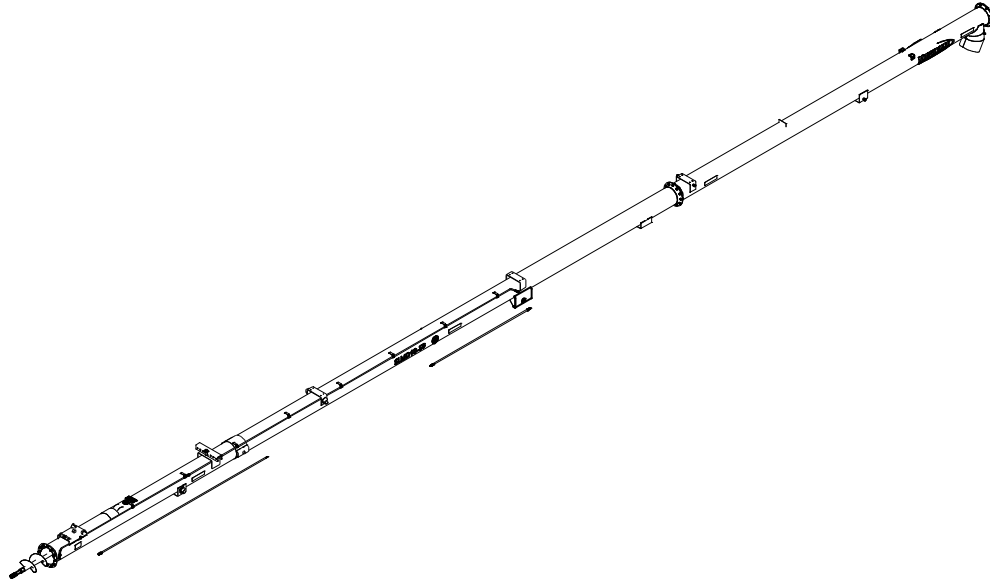
## BOOT

SLMD10			
REF #	PART #	QUANTITY	DESCRIPTION
1	13071206016	4	Flange Bolt 3/8-16 UNC X 1
2	13073100007	6	Flange Nut 7/16-14 UNC
3	13000003012-00	1	Swivel Large Top Plate
4	13000003011-00	2	Swivel Small Top Plate
5	13000003013-00	1	P.R. Large Spacer Plate
6	13000003010-00	2	Pivot Ring - Small Spacer Plate
7	13000003009-00	1	Pivot Assembly
8	13070907020	6	Carriage Bolt 7/16-14 UNC x 1.25
9	13070206016	10	Hex Cap Screw 3/8-16 UNC X 1
10	13073000006	7	Nylon Locknut 3/8-16 UNC
11	13070906012	7	Carriage Bolt 3/8-16 UNC x 0.75
12	13000002711-00	1	Shaft Reverse
13	13073100008	20	Flange Lock Nut 1/2-13 UNC
14	13073400008	4	Helical Spring Lock Washers
15	13072400008	4	Hex Nut 1/2-13 UNC
16	13070904012	4	Carriage Bolt 1/4-20 UNC x 0.75
17	13000003018-00	1	Guard Hinge
18	13073100006	13	Flange Lock Nut 3/8-16 UNC
19	13000002884-00	1	PTO Bracket Right
20	13000002882-00	1	PTO Holder
21	13000002883-00	1	PTO Bracket - Left
22	13000002963-00	1	Gear Box
23	13070208032	4	Hex Cap Screw 1/2-13 UNC X 2
24	13000003015-00	1	Holder - Bushing
25	13000002714-00	1	Reverse Bearing Shield
26	13000003016-00	1	Bushing Holder Assembly
27	13070208020	9	Hex Bolt 1/2-13 UNC X 1.25
28	13000003008-00	1	Boot Assembly
29	13000002708-00	2	Clean Out Door Latch
30	13000003014-00	1	Inspection Door
31	13070206012	1	Hex Cap Screw 3/8-16 UNC X 0.75
32	13000002707-00	1	Clean Out Door Assembly
33	13072500010	2	Hex Nut 5/8-11 UNC
34	13073400010	2	Helical Spring Lock Washers
35	13000002877-00	2	Washer Felt
36	13000002511-00	1	1 1/4" Ball Bearing Insert c/w Housing
37	13000002703-00	3	Reverse Bearing
38	13000003540-00	1	Keystock 5/16 x 5/16 x 1 3/8
39	13074000808	2	Woodruff Key
40	13000001200-00	1	Sprocket - 60B18 - 1.25" Hardened
41	13000002715-00	2	Middle Drive Sprocket
42	13000002719-00	1	60B-1R-45 c/w Connecting Link
43	13071204010	4	Flange Bolt 1/4-20 UNC X 0.625
44	13073200006	3	Wing Nut 3/8-16
45	13000003019-00	1	Boot Guard
46	13000002620-00	1	P.T.O. Bracket Pin & Clip
47	13073902040	1	Hair Pin 1/8" x 2 1/2"
48	13070206072	1	Hex Cap Screw 3/8-16 UNC X 4.5
49	13000002721-00	1	PTO Guard
50	13073100004	12	Flange Lock Nut 1/4-20 UNC
51	13000003826-00	1	Hitch Main
52	13070208024	11	Hex cap Screw 1/2-13 UNC X 1.5
53	13000003020-00	1	U-Bolt
54	13000002699-00	1	Draw Pin
55	13000002725-00	1	Jack - 5000lb Cap
56	13000002723-00	1	Hitch Extension

# TUBE ASSEMBLY - SLMD10-59

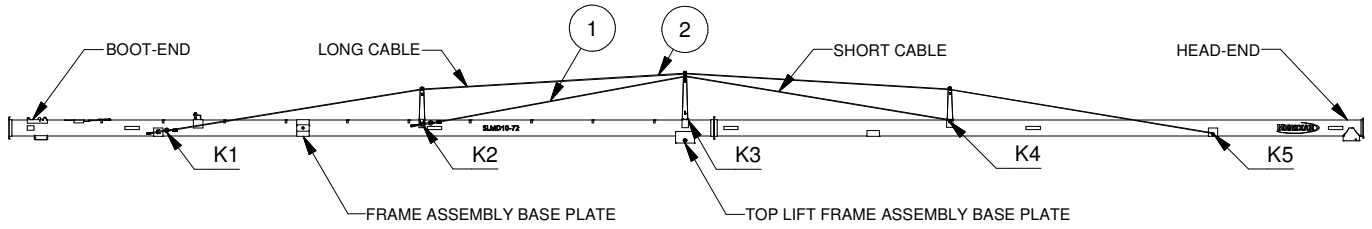


# TUBE ASSEMBLY - SLMD10-59



SLMD10-59			
REF #	PART #	QUANTITY	DESCRIPTION
1	13000003065-00	1	Flight Top
2	13070208024	4	Hex Cap Screw 1/2-13 UNC X 1.5
3	13000002682-00	1	Head - End Plate
4	13073100006	11	Flange Nut - 3/8-16 UNC
5	13000002703-00	1	Reverse Bearing
6	13073100008	28	Flange Nut - 1/2-13 UNC
7	13000003007-00	1	Washer Plated
8	13073400008	1	Helical Spring Lock Washers
9	13070208028	1	Hex Cap Screw 1/2-13 UNC X 1.75
10	13072500010	4	Hex Nut 5/8-11 UNC
11	13073400010	4	Helical Spring Lock Washers
12	13000003070-00	4	Cable Bracket Bushing
13	13073600010	4	Flat Washer 5/8"
14	13070210032	4	Hex Cap Screw 5/8-11 UNC X 2
15	13000003062-00	1	Tube Top
16	13000003074-00	1	Main Flight
17	13000004865-00	1	Angle Spout 10"
18	13071206012	3	Flange Bolt 3/8-16 UNC X 0.75
19	13071206016	8	Flange Bolt 3/8-16 UNC X 1
20	13000003071-00	1	Tube
21	13071208020	21	Flange Bolt 1/2-13 UNC X 1.25
22	13071208024	3	Flange Bolt 1/2-13 UNC X 1.5
23	13000003095-00	9	Hyd. Line Clip c/w Rubber Insert
24	13070604010	9	Self Tapping Screw 1/4-20 UNC X 0.625
25	13000042136-00	1	Valve - Ball
26	13000003093-00	2	Connector Hose Hydraulic
27	13000003089-00	1	Hydraulic Line
28	13000003113-00	1	Male Pioneer Tip
29	13000003088-00	1	Hose Hyd. 3/8" c/w 3/8 NPT & 1/2 NPT
30	13000003096-00	1	Line Splice Connector
31	13000003086-00	1	Top Hydraulic Line
32	13000003092-00	1	Hydraulic Hose
33	13000003094-00	1	3/8" Coupler

# TRUSS ASSEMBLY



SLMD10 TRUSS ASSEMBLIES KEY PLAN

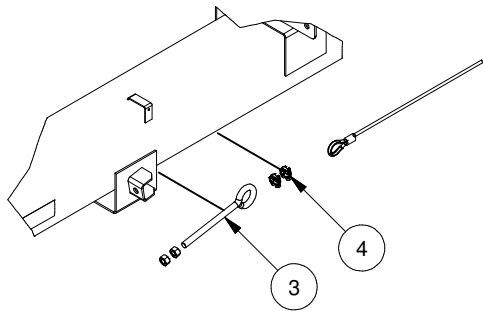


FIGURE K1

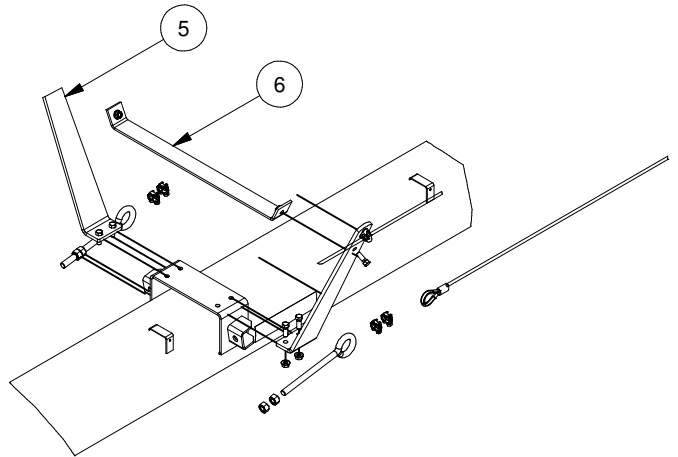


FIGURE K2

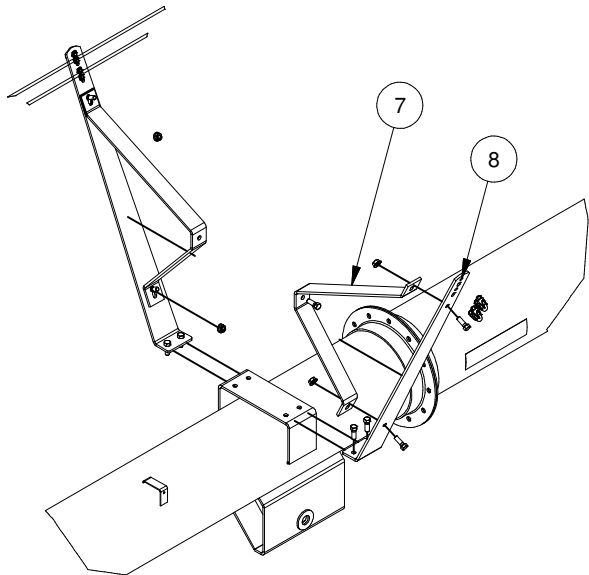


FIGURE K3

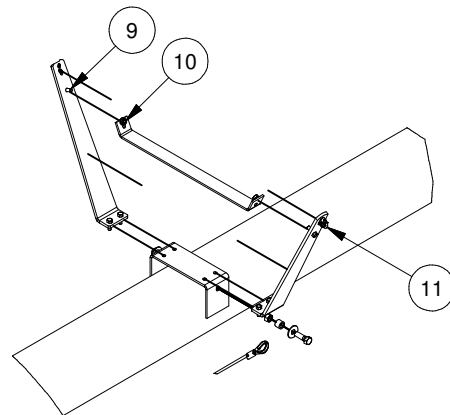


FIGURE K4

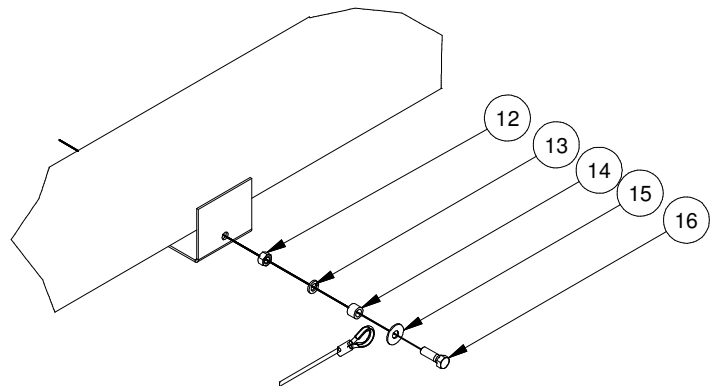
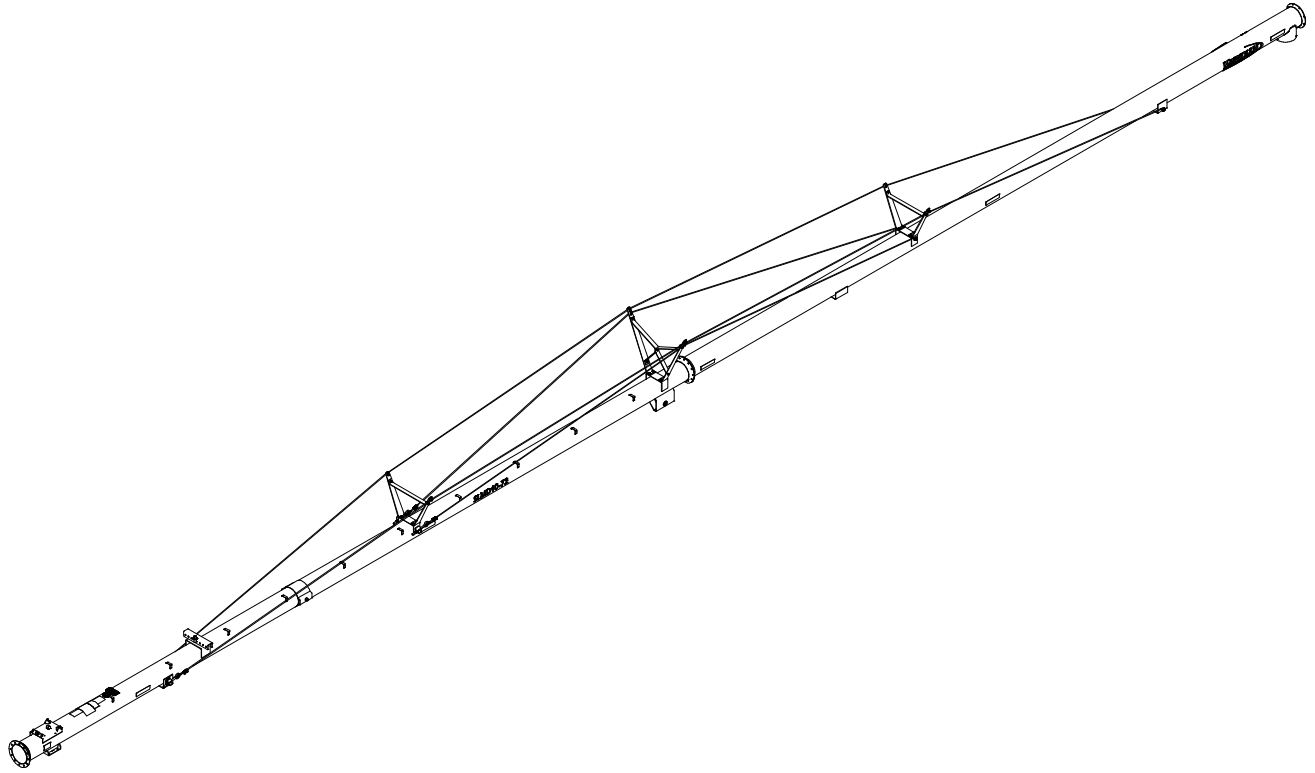


FIGURE K5

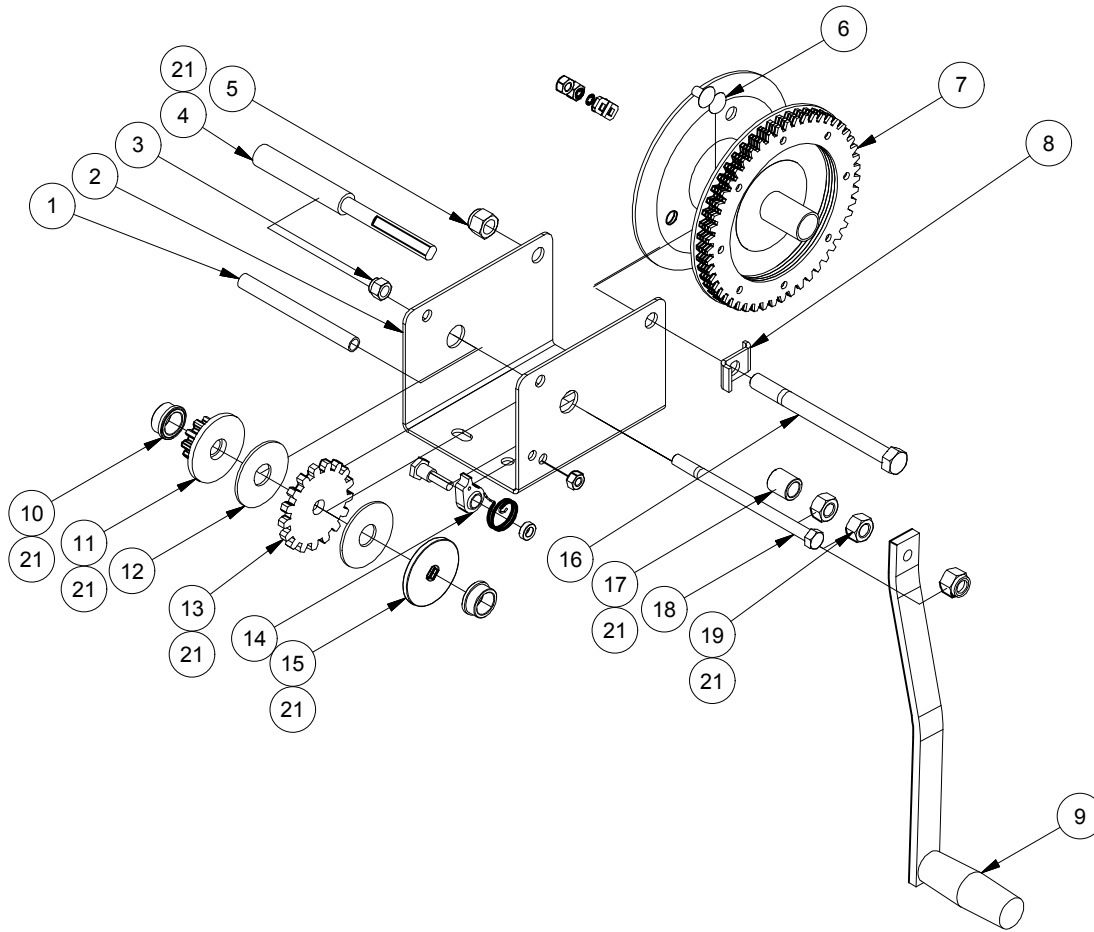
## TRUSS ASSEMBLY



SLMD10			
REF #	PART #	QUANTITY	DESCRIPTION
1	13000003080-00	2	Short Support Cable - 1800
1	13000003081-00	2	Short Support Cable - 2000
1	13000003082-00	2	Short Support Cable - 2200
2	13000003083-00	2	Long Support Cable - 1800
2	13000003084-00	2	Long Support Cable - 2000
2	13000003085-00	2	Long Support Cable - 2200
3	13000003087-00	4	Eye Bolt
4	13000002433-00	8	Cable Clamp - 5/16"
5	13000003068-00	4	Bracket Truss Small
6	13000003069-00	2	Small Truss Brace
7	13000003078-00	2	Main Truss Brace
8	13000003079-00	2	Main Truss
9	13-0702-07020	21	Hex Cap Screw 7/16-14 UNC - 1.25
10	13-0731-00007	21	Flange Nut - 7/16-14 UNC
11	130000030601-00	8	Cable Clamp - 3/8"
12	13-0725-00010	12	Hex Nut - 5/8-11 UNC
13	13-0734-00010	4	Spring Lock Washer - 5/8"
14	13000003070-00	4	Cable Bracket Bushing
15	13-0735-00010	4	Plain Washer - 5/8"
16	13-0702-10032	4	Hex Cap Screw 5/8-11 UNC - 2



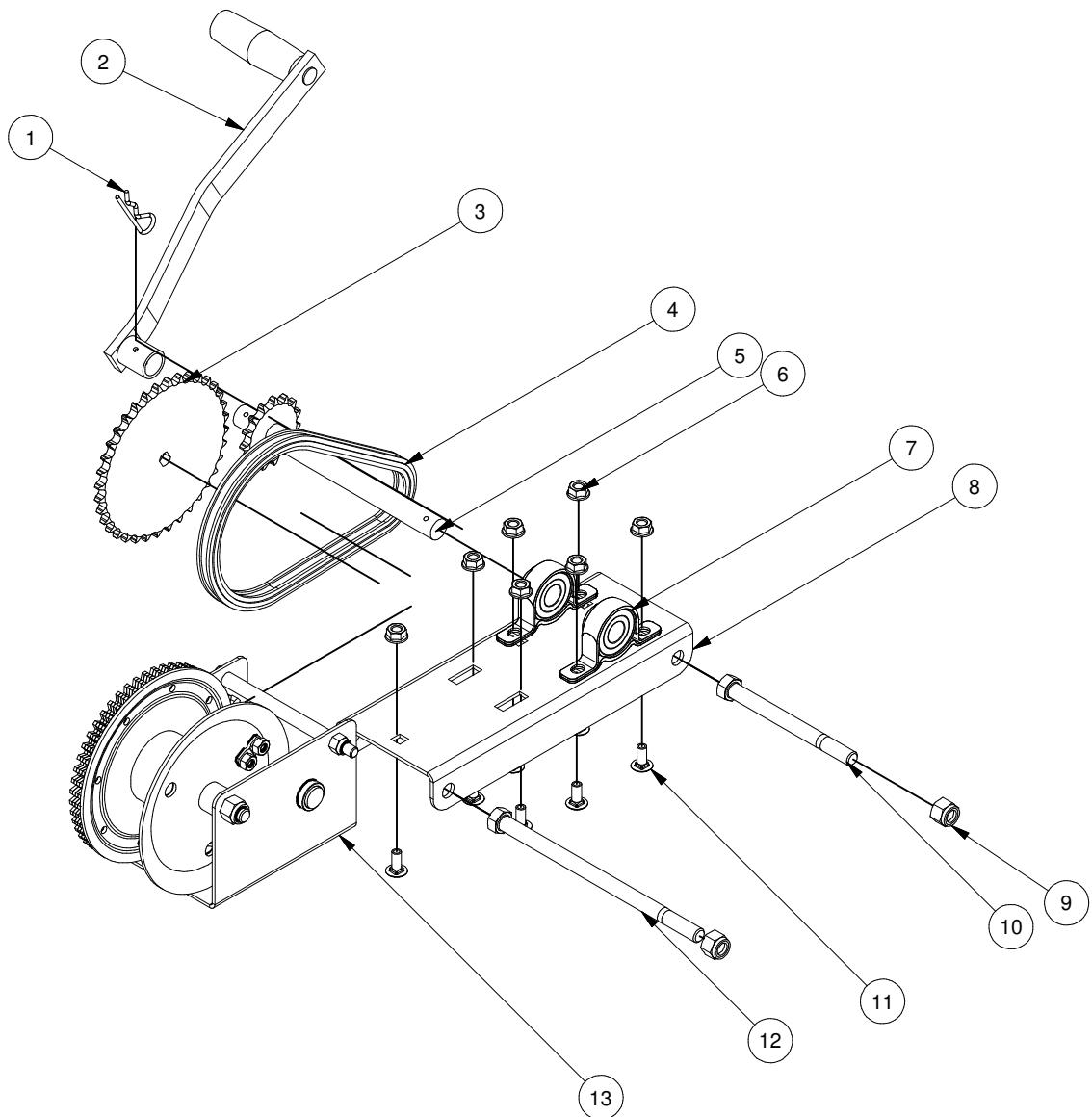
# FULTON K1550 BRAKE WINCH



## AUGER 12-95

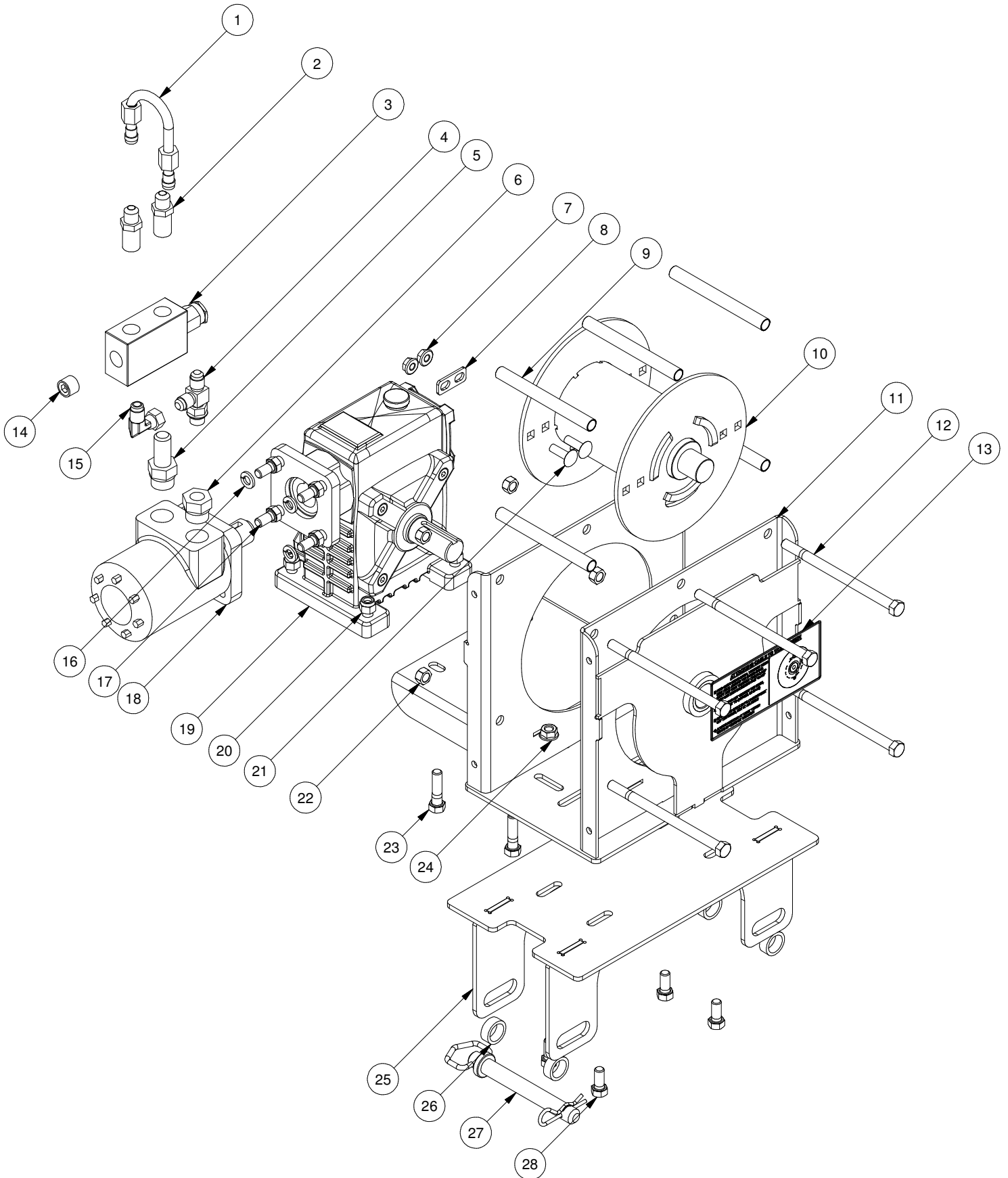
REF #	PART #	QUANTITY	DESCRIPTION
1	N/A	1	Frame Spacer (Not Available to Order)
2	N/A	1	Frame (Not Available to Order)
3	13-0729-00006	1	Nylon Locknut 3/8 - 16
4	13000001936-00	1	Input Shaft
5	13-0729-00008	2	Nylon Locknut 1/2 - 13
6	13000001672-00	1	Cable Clamp
7	13000001935-00	1	Drum Assembly
8	N/A	1	Keeper (Not Available to Order)
9	13000001711-00	1	Handle
10	13000001937-00	2	Bushing
11	13000001947-00	1	Pinion & Disc
12	13000001677-00	2	Brake Pads
13	13000001932-00	1	Ratchet Gear
14	13000001712-00	1	Pawl and Spring Kit
15	13000001933-00	1	Shaft Brake Disc
16	13-0702-08096	1	Hex Cap Screw - 1/2 x 6 - 13
17	13000001934-00	1	Spacer
18	13-0702-06096	1	Hex Cap Screw - 3/8 x 6 - 16
19	13-0724-00008	2	Hex Nut 1/2 - 13
20	13000001671-00	1	Fulton 1550 Winch Complete
21	13000002541-00	-	K1550 Winch Repair Kit - Includes Items 4,10,11,13,15,17,19

## BOLT ON WINCH PLATE



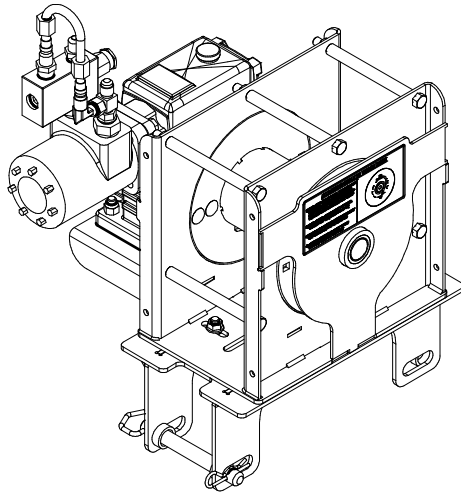
SLMD10			
REF #	PART #	QUANTITY	DESCRIPTION
1	13-0739-02040	1	1/8" x 2 1/2" Hair Pin
2	2717-00	1	Handle Assembly
3	13000003103-00	1	36 Tooth Sprocket - 15 Tooth 80
4	13000001175-00	1	Winch Drive Chain
5	13000003126-00	1	Drive Winch
6	13-0731-00006	7	Flange Lock Nut 3/8-16 UNC
7	13000002713-00	2	3/4" Bearing c/w Housing
8	13000003125-00	1	Plate Winch Bolt On
9	13-0729-00008	2	Nylon Lock Nut 1/2 Std NC
10	13-0702-08088	1	Hex Cap Screw 1/2-13 UNC - 5.5
11	13-0709-05012	7	Carriage Bolt 5/16-18 UNC - 0.75
12	13-0702-08144	1	Hex Cap Screw 1/2-13 UNC - 9
13	13000001671-00	1	K-1550 Fulton Winch

# OPTIONAL - WINCH HYDRAULIC



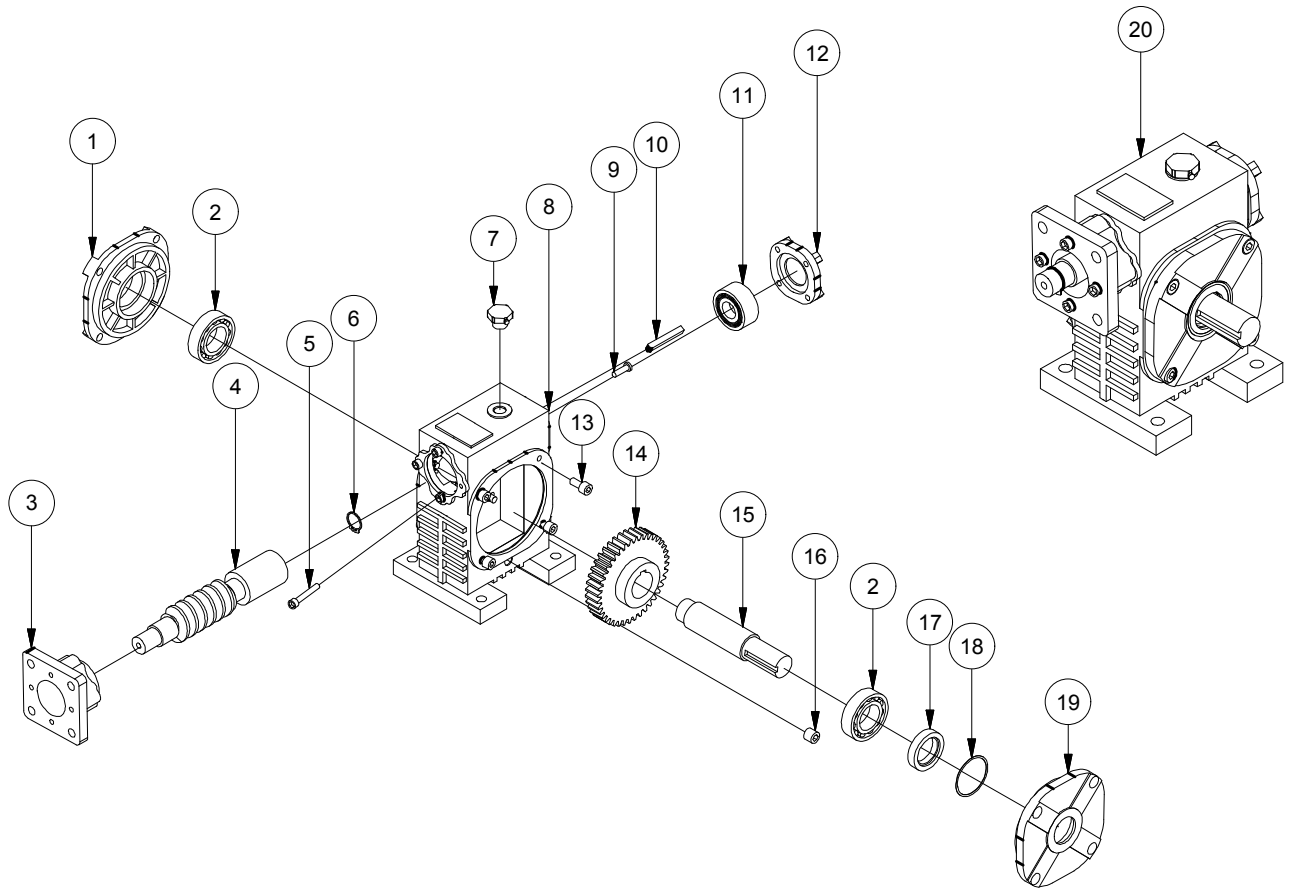
PARTS

# OPTIONAL - WINCH HYDRAULIC



SLMD10			
REF #	PART #	QUANTITY	DESCRIPTION
1	13000042586-00	1	Hard Line 3/8" Bypass
2	13000042582-00	2	Hyd. Fit - 6MJ-6MP w/o Inner Set Screw Restrictor
3	13000042134-00	1	Lift Bypass Valve
4	13000042584-01	1	Hyd Fitting Tee - 6MB-6MJ-6MJ w/o Inner Set Screw
5	13000042580-00	1	Hydraulic Fitting - 10MB-6MP
6	13000042581-00	1	Hydraulic Fitting - 10MB-6FB
7	13-0731-00005	2	Flange Nut - 5/16-18 UNC
8	13000004250-00	1	Cable Tee
9	13000004251-00	5	Spacer
10	13000004249-00	1	Cable Drum
11	13000004247-00	1	Mount Gearbox w/ Bushing
12	13-0702-06096	5	Hex Cap Screw - 3/8-16 UNC - 1.5
13	13000043124-00	1	Decal - Winch
14	13000042139-00	1	6MP - Plug
15	13000042583-00	1	Hydraulic Fitting Elbow - 6MJ-6FJX90
16	13-0734-00006	4	Spring Lock Washer - 3/8
17	13-0702-06012	4	Hex Cap Screw - 3/8-16 UNC - 0.75
18	13000042244-00	1	Motor - 4.5 C.I.
19	13000003969-00	1	Gear Reducer 1:20
20	13-0729-00006	4	Nylock Nut - 3/8 Std NC
21	13-0709-05016	2	Carriage Bolt 5/16 x 1-18
22	13-0730-00006	5	Stover Nut - 3/8-16
23	13-0702-06024	4	Hex Cap Screw - 3/8-16 UNC - 6
24	13-0731-00006	4	Flange Lock Nut - 3/8-16
25	13000004733-00	1	Winch Mount
26	13000004750-00	4	Spacer
27	13000002699-00	1	Draw Pin
28	13-0702-06014	4	Hex Cap Screw - 3/8 x 7/8-16
-	13000004735-00	2	Hydraulic Hose - 3/8" x 21' c/w Fittings
-	13000042205-00	2	1/2" Male Pioneer End (For Hydraulic Hose)
-	13000004725-00	1	Kit - Winch Hydraulic

# OPTION - GEAR REDUCER



SLMD10			
REF #	PART #	QUANTITY	DESCRIPTION
1	13000004440-00	1	Output Shaft Cover - Back
2	13000004443-00	2	Bearing - Front
3	13000004438-00	1	Housing
4	13000004449-00	1	Worm Shaft
5	13000004436-00	4	Hex Screw - Long
6	13000004433-00	1	Snap Ring
7	13000004448-00	1	Oil Cover
8	13000004445-00	1	Frame
9	13000004435-00	4	Hex Screw - Medium
10	13000004432-00	1	Key
11	13000004442-00	1	Bearing - Side
12	13000004437-00	1	Input Flange
13	13000004447-00	8	Hex Screw - Short
14	13000004446-00	1	Worm Wheel
15	13000004444-00	1	Output Shaft
16	13000004439-00	1	Oil Plug
17	13000004434-00	1	Oil Seal
18	13000004431-00	1	Shim
19	13000004441-00	1	Output Shaft Cover - Front
20	13000003969-00	-	Complete Gear Reducer Assembly

## GENERAL PARTS

PART NUMBER	DESCRIPTION
13000002949-00	Red Spray Paint
13000005060-00	65 year decal
13000004846-00	Dark Grey Spray Paint
13000001920-00	10" Cupped Repair Flight w/ Shaft and Stub - 2"
13000001569-00	10" Regular Flight / Foot - 2" OD Shaft
13000001570-00	10" Cupped Flight / 2 Feet - 2" OD Shaft
13000001648-00	10" Flight Shaft Core / Foot - 2" OD
13000001530-02	10" Flight Shaft Stub - Joiner - 1 3/4" OD Shaft
13000003866-00	10" Helix - Cup / Foot - 2" OD Shaft
13000001644-00	Drive Shaft / Foot - 1 3/8" OD
13000001571-00	10" Tubing / Foot
13000001526-13	10" Angle Flange
13000003705-00	Decal - SLMD10-59
13000003706-00	Decal - SLMD10-66
13000003707-00	Decal - SLMD10-72
13000003685-00	Decal - Meridian
13000001653-00	Decal - Caution (Large)
13000001654-00	Decal - Warning
13000001655-00	Decal - Danger - Upending Hazard
13000001656-00	Decal - Danger - Electrocutation Hazard
13000001657-00	Decal - Danger - Rotating Flighting
13000001658-00	Decal - Warning - Mover Part Hazard
13000001659-00	Decal - Caution (Small)
13000001660-00	Decal - Rotating Drive Line
13000001714-00	Decal - Hydraulic Lift Valve
13000001716-00	Decal - Warning - High Pressure Fluid Hazard
13000003295-00	Decal - PTO Operation 1
13000003296-00	Decal - PTO Operation 2
13000004944-00	Decal - Grease Locations
13000004936-00	Decal - Patent Protected
13000002901-00	Reflector Yellow
13000002900-00	Reflector Red
13000004971-00	Kit - Bolt On Repair Band 10in

# INDEX

Part #	Page	Ref #	Part #	Page	Ref #	Part #	Page	Ref #
13000001005-00	C2	26	13000002424-00	C10	2	13000002799-00	C19	14
13000001005-00	C4	27	13000002425-00	C10	3	13000002800-00	C20	3
13000001005-00	C6	27	13000002426-00	C10	17	13000002800-00	C19	3
13000001005-00	C20	7	13000002427-00	C10	18	13000002801-00	C20	15
13000001005-00	C19	11	13000002428-00	C10	4	13000002801-00	C19	10
13000001006-00	C20	5	13000002430-00	C10	12	13000002804-00	C20	4
13000001006-00	C19	5	13000002433-00	C30	4	13000002804-00	C19	7
13000001060-00	C18	9	13000002511-00	C22	36	13000002805-00	C20	14
13000001175-00	C32	4	13000002541-00	C31	21	13000002805-00	C19	4
13000001200-00	C22	40	13000002620-00	C22	46	13000002807-00	C19	6
13000001239-00	C12	42	13000002682-00	C24	3	13000002808-00	C20	11
13000001239-00	C14	28	13000002682-00	C26	18	13000002808-00	C19	13
13000001387-00	C18	12	13000002682-00	C28	18	13000002811-00	C20	-
13000001671-00	C31	20	13000002699-00	C34	27	13000002811-00	C19	
13000001671-00	C32	13	13000002699-00	C18	13	13000002812-00	C20	-
13000001672-00	C31	6	13000002699-00	C22	54	13000002812-00	C19	-
13000001677-00	C31	12	13000002700-00	C18	10	13000002813-00	C20	-
13000001711-00	C31	9	13000002703-00	C22	37	13000002813-00	C19	-
13000001712-00	C31	14	13000002703-00	C24	5	13000002816-00	C20	13
13000001725-00	C24	25	13000002703-00	C26	2	13000002816-00	C19	15
13000001725-00	C26	25	13000002703-00	C28	2	13000002818-00	C20	17
13000001725-00	C28	25	13000002707-00	C22	32	13000002819-00	C19	12
13000001782-00	C18	19	13000002708-00	C22	29	13000002820-00	C20	6
13000001932-00	C31	13	13000002710-00	C16	23	13000002821-00	C19	9
13000001933-00	C31	15	13000002711-00	C22	12	13000002822-00	C20	16
13000001934-00	C31	17	13000002713-00	C32	7	13000002822-00	C19	2
13000001935-00	C31	7	13000002714-00	C22	25	13000002824-00	C19	1
13000001936-00	C31	4	13000002715-00	C22	41	13000002825-00	C20	2
13000001937-00	C31	10	13000002717-00	C32	2	13000002826-00	C10	11
13000001946-00	C19	-	13000002719-00	C22	42	13000002832-00	C20	10
13000001947-00	C31	11	13000002721-00	C22	49	13000002832-00	C19	16
13000002282-00	C14	31	13000002723-00	C22	55	13000002877-00	C22	35
13000002316-00	C12	44	13000002725-00	C22	56	13000002882-00	C22	20
13000002316-00	C14	16	13000002744-00	C14	33	13000002883-00	C22	21
13000002410-00	C10	19	13000002750-00	C14	34	13000002884-00	C22	19
13000002411-00	C10	9	13000002751-00	C12	57	13000002946-00	C16	16
13000002414-00	C10	16	13000002751-00	C14	29	13000002947-00	C19	8
13000002415-00	C10	15	13000002766-00	C2	23	13000002962-00	C20	1
13000002416-00	C10	8	13000002766-00	C4	23	13000002963-00	C22	22
13000002417-00	C10	5	13000002766-00	C6	23	13000002963-00	C20	18
13000002418-00	C10	14	13000002774-00	C7	17	13000002978-00	C7	1
13000002419-00	C10	1	13000002775-00	C8	17	13000002979-00	C8	1
13000002420-00	C10	10	13000002776-00	C9	17	13000002980-00	C9	1
13000002421-00	C10	7	13000002777-00	C14	56	13000002981-00	C7	19
13000002422-00	C10	13	13000002796-00	C18	8	13000002982-00	C8	19
13000002423-00	C10	6	13000002799-00	C20	12	13000002983-00	C9	19

# INDEX

Part #	Page	Ref #	Part #	Page	Ref #	Part #	Page	Ref #
13000002984-00	C7	7	13000003007-00	C26	4	13000003056-00	C14	8
13000002985-00	C8	7	13000003007-00	C28	4	13000003057-00	C14	21
13000002986-00	C9	7	13000003008-00	C22	28	13000003058-00	C14	36
13000002987-00	C7	6	13000003009-00	C22	7	13000003060-00	C14	7
13000002988-00	C8	6	13000003010-00	C22	6	13000003061-00	C14	43
13000002989-00	C9	6	13000003011-00	C22	4	13000003062-00	C24	15
13000002990-00	C7	23	13000003012-00	C22	3	13000003065-00	C24	1
13000002990-00	C8	23	13000003013-00	C22	5	13000003068-00	C30	5
13000002990-00	C9	23	13000003014-00	C22	30	13000003069-00	C30	6
13000002992-00	C7	9	13000003015-00	C22	24	13000003070-00	C24	12
13000002992-00	C8	9	13000003016-00	C22	26	13000003070-00	C26	9
13000002992-00	C9	9	13000003018-00	C22	17	13000003070-00	C28	9
13000002993-00	C7	5	13000003020-00	C22	53	13000003070-00	C30	14
13000002993-00	C8	5	13000003021-00	C16	8	13000003071-00	C24	20
13000002993-00	C9	5	13000003022-00	C16	28	13000003074-00	C24	16
13000002994-00	C7	11	13000003023-00	C16	18	13000003078-00	C30	7
13000002994-00	C8	11	13000003024-00	C16	11	13000003079-00	C30	8
13000002994-00	C9	11	13000003025-00	C16	10	13000003080-00	C30	1
13000002995-00	C7	12	13000003026-00	C16	24	13000003081-00	C30	1
13000002995-00	C8	12	13000003027-00	C16	25	13000003082-00	C30	1
13000002995-00	C9	12	13000003028-00	C16	6	13000003083-00	C30	2
13000002996-00	C7	18	13000003029-00	C14	13	13000003084-00	C30	2
13000002996-00	C8	18	13000003029-00	C16	2	13000003085-00	C30	2
13000002996-00	C9	18	13000003030-00	C16	5	13000003086-00	C24	31
13000002997-00	C7	16	13000003032-00	C16	3	13000003086-00	C26	31
13000002997-00	C8	16	13000003033-00	C16	13	13000003086-00	C28	31
13000002997-00	C9	16	13000003034-00	C16	21	13000003087-00	C30	3
13000002998-00	C2	13	13000003035-00	C16	27	13000003088-00	C24	29
13000002999-00	C4	13	13000003036-00	C14	40	13000003088-00	C26	29
13000003000-00	C6	13	13000003037-00	C14	19	13000003088-00	C28	28
13000003001-00	C2	15	13000003038-00	C14	25	13000003089-00	C24	30
13000003001-00	C4	15	13000003039-00	C14	26	13000003090-00	C26	27
13000003001-00	C6	15	13000003041-00	C14	23	13000003091-00	C28	29
13000003002-00	C2	20	13000003043-00	C14	5	13000003092-00	C24	32
13000003003-00	C4	20	13000003044-00	C14	24	13000003092-00	C26	32
13000003004-00	C6	20	13000003045-00	C14	1	13000003092-00	C28	32
13000003005-00	C2	14	13000003046-00	C14	6	13000003093-00	C24	26
13000003005-00	C4	14	13000003047-00	C14	2	13000003093-00	C26	26
13000003005-00	C6	14	13000003048-00	C14	3	13000003093-00	C28	26
13000003006-00	C2	19	13000003049-00	C14	44	13000003094-00	C24	33
13000003006-00	C4	19	13000003050-00	C14	18	13000003094-00	C26	33
13000003006-00	C6	19	13000003051-00	C14	50	13000003094-00	C28	33
13000003007-00	C2	9	13000003052-00	C14	47	13000003095-00	C24	23
13000003007-00	C4	9	13000003053-00	C14	46	13000003095-00	C26	23
13000003007-00	C6	9	13000003054-00	C14	48	13000003095-00	C28	23
13000003007-00	C24	7	13000003055-00	C14	49	13000003096-00	C24	27



# INDEX

Part #	Page	Ref #	Part #	Page	Ref #	Part #	Page	Ref #
13000003096-00	C26	30	13000003155-00	C18	7	13000003724-00	C12	4
13000003096-00	C28	30	13000003156-00	C2	32	13000003826-00	C22	51
13000003103-00	C32	3	13000003156-00	C4	32	13000003969-00	C34	19
13000003107-00	C7	20	13000003156-00	C6	32	13000003969-00	C35	20
13000003108-00	C8	20	13000003157-00	C14	22	13000004247-00	C34	11
13000003109-00	C9	20	13000003158-00	C14	37	13000004249-00	C34	10
13000003113-00	C24	28	13000003250-00	C20	9	13000004250-00	C34	8
13000003113-00	C26	28	13000003250-00	C19	17	13000004251-00	C34	9
13000003113-00	C28	27	13000003325-00	C7	2	13000004265-00	C12	24
13000003125-00	C32	8	13000003325-00	C8	2	13000004431-00	C35	18
13000003126-00	C32	5	13000003325-00	C9	2	13000004432-00	C35	10
13000003128-00	C16	26	13000003326-00	C7	3	13000004433-00	C35	6
13000003130-00	C2	25	13000003326-00	C8	3	13000004434-00	C35	17
13000003130-00	C4	25	13000003326-00	C9	3	13000004435-00	C35	9
13000003130-00	C6	25	13000003379-00	C2	5	13000004436-00	C35	5
13000003131-00	C2	29	13000003379-00	C4	5	13000004437-00	C35	12
13000003131-00	C4	28	13000003379-00	C6	5	13000004438-00	C35	3
13000003131-00	C6	28	13000003380-00	C2	1	13000004439-00	C35	16
13000003132-00	C2	31	13000003380-00	C4	1	13000004440-00	C35	1
13000003132-00	C4	31	13000003380-00	C6	1	13000004441-00	C35	19
13000003132-00	C6	31	13000003381-00	C2	7	13000004442-00	C35	11
13000003133-00	C2	27	13000003381-00	C4	7	13000004443-00	C35	2
13000003133-00	C4	26	13000003381-00	C6	7	13000004444-00	C35	15
13000003133-00	C6	26	13000003382-00	C2	2	13000004445-00	C35	8
13000003135-00	C2	28	13000003382-00	C4	2	13000004446-00	C35	14
13000003135-00	C4	29	13000003382-00	C6	2	13000004447-00	C35	13
13000003135-00	C6	29	13000003388-00	C2	12	13000004448-00	C35	7
13000003136-00	C2	30	13000003388-00	C4	12	13000004449-00	C35	4
13000003136-00	C4	30	13000003388-00	C6	12	13000004663-00	C12	27
13000003136-00	C6	30	13000003389-00	C2	4	13000004664-00	C12	9
13000003138-00	C2	18	13000003389-00	C4	4	13000004665-00	C12	22
13000003138-00	C4	18	13000003389-00	C6	4	13000004666-00	C12	6
13000003138-00	C6	18	13000003390-00	C2	6	13000004667-00	C12	49
13000003144-00	C18	17	13000003390-00	C4	6	13000004668-00	C12	34
13000003145-00	C18	24	13000003390-00	C6	6	13000004669-00	C12	16
13000003146-00	C18	23	13000003391-00	C12	18	13000004670-00	C12	14
13000003147-00	C18	25	13000003506-00	C26	20	13000004671-00	C12	40
13000003148-00	C18	2	13000003507-00	C28	20	13000004672-00	C12	30
13000003149-00	C18	4	13000003508-00	C26	12	13000004673-00	C12	55
13000003150-00	C2	24	13000003508-00	C28	12	13000004674-00	C12	58
13000003150-00	C4	24	13000003510-00	C26	13	13000004675-00	C12	2
13000003150-00	C6	24	13000003511-00	C28	13	13000004677-00	C12	41
13000003151-00	C18	20	13000003512-00	C26	1	13000004678-00	C12	17
13000003152-00	C18	16	13000003513-00	C28	1	13000004679-00	C12	25
13000003153-00	C18	14	13000003515-00	C14	4	13000004680-00	C12	20
13000003154-00	C18	11	13000003540-00	C22	38	13000004681-00	C12	21

# INDEX

Part #	Page	Ref #	Part #	Page	Ref #	Part #	Page	Ref #
13000004682-00	C12	26	13-0702-07020	C30	9	13-0706-04010	C28	24
13000004683-00	C12	1	13-0702-07048	C16	15	13-0709-04012	C22	16
13000004684-00	C12	31	13-0702-08020	C2	11	13-0709-05012	C14	27
13000004685-00	C12	10	13-0702-08020	C4	11	13-0709-05012	C32	11
13000004686-00	C12	11	13-0702-08020	C6	11	13-0709-05016	C12	39
13000004690-00	C12	45	13-0702-08020	C22	27	13-0709-05016	C34	21
13000004696-00	C12	8	13-0702-08024	C22	52	13-0709-06012	C14	17
13000004704-00	C12	36	13-0702-08024	C24	2	13-0709-06012	C22	11
13000004705-00	C12	33	13-0702-08024	C26	17	13-0709-06016	C12	29
13000004706-00	C12	47	13-0702-08024	C28	17	13-0709-06016	C14	15
13000004708-00	C12	46	13-0702-08028	C24	9	13-0709-06016	C18	22
13000004709-00	C12	32	13-0702-08028	C26	6	13-0709-06024	C14	32
13000004725-00	C34	-	13-0702-08028	C28	6	13-0709-06032	C12	19
13000004733-00	C34	25	13-0702-08032	C22	23	13-0709-06048	C12	28
13000004735-00	C34	-	13-0702-08056	C18	6	13-0709-07020	C16	9
13000004738-00	C14	12	13-0702-08088	C32	10	13-0709-07020	C22	8
13000004742-00	C14	11	13-0702-08096	C31	16	13-0709-10024	C7	4
13000004750-00	C34	26	13-0702-08144	C32	12	13-0709-10024	C8	4
13000004865-00	C24	17	13-0702-10024	C7	8	13-0709-10024	C9	4
13000004865-00	C26	14	13-0702-10024	C8	8	13-0712-04008	C12	12
13000004865-00	C28	15	13-0702-10024	C9	8	13-0712-04010	C12	43
13000030601-00	C30	11	13-0702-10024	C16	22	13-0712-04010	C22	43
13000042134-00	C34	3	13-0702-10028	C14	35	13-0712-04012	C14	14
13000042139-00	C34	14	13-0702-10032	C24	14	13-0712-04012	C16	7
13000042205-00	C34	-	13-0702-10032	C26	11	13-0712-04012	C26	16
13000042244-00	C34	18	13-0702-10032	C28	11	13-0712-05012	C14	55
13000042580-00	C34	5	13-0702-10032	C30	16	13-0712-05016	C12	15
13000042581-00	C34	6	13-0702-10040	C18	3	13-0712-06012	C12	3
13000042582-00	C34	2	13-0702-12064	C2	3	13-0712-06012	C14	58
13000042583-00	C34	15	13-0702-12064	C4	3	13-0712-06012	C24	18
13000042584-01	C34	4	13-0702-12064	C6	3	13-0712-06012	C26	15
13000042586-00	C34	1	13-0702-12080	C2	22	13-0712-06012	C28	14
13000043124-00	C34	13	13-0702-12080	C4	22	13-0712-06016	C12	38
130100003019-00	C22	45	13-0702-12080	C6	22	13-0712-06016	C14	39
13-0702-05012	C20	8	13-0702-12144	C14	45	13-0712-06016	C16	12
13-0702-05012	C19	18	13-0702-12176	C12	50	13-0712-06016	C22	1
13-0702-06012	C34	17	13-0702-16040	C12	37	13-0712-06016	C24	19
13-0702-06012	C22	31	13-0702-16040	C7	13	13-0712-06016	C28	16
13-0702-06014	C34	28	13-0702-16040	C8	13	13-0712-06020	C12	13
13-0702-06016	C22	9	13-0702-16040	C9	13	13-0712-08020	C12	35
13-0702-06024	C14	9	13-0702-18136	C7	15	13-0712-08020	C24	21
13-0702-06024	C34	23	13-0702-18136	C8	15	13-0712-08020	C26	22
13-0702-06036	C14	10	13-0702-18136	C9	14	13-0712-08020	C28	22
13-0702-06072	C22	48	13-0706-04008	C16	1	13-0712-08024	C24	22
13-0702-06096	C31	18	13-0706-04010	C24	24	13-0712-08028	C26	21
13-0702-06096	C34	12	13-0706-04010	C26	24	13-0712-08028	C28	21

# INDEX

Part #	Page	Ref #	Part #	Page	Ref #	Part #	Page	Ref #
13-0724-00008	C31	19	13-0730-00006	C12	59	13-0734-00008	C2	10
13-0725-00008	C22	15	13-0730-00006	C14	20	13-0734-00008	C4	10
13-0725-00010	C2	16	13-0730-00006	C34	22	13-0734-00008	C6	10
13-0725-00010	C4	16	13-0730-00010	C14	51	13-0734-00008	C22	14
13-0725-00010	C6	16	13-0730-00010	C16	20	13-0734-00008	C26	5
13-0725-00010	C7	21	13-0730-00012	C14	41	13-0734-00008	C28	5
13-0725-00010	C8	21	13-0731-00004	C12	52	13-0734-00010	C2	17
13-0725-00010	C9	21	13-0731-00004	C14	54	13-0734-00010	C4	17
13-0725-00010	C18	27	13-0731-00004	C16	4	13-0734-00010	C6	17
13-0725-00010	C22	33	13-0731-00004	C22	50	13-0734-00010	C7	22
13-0725-00010	C24	10	13-0731-00005	C12	51	13-0734-00010	C8	22
13-0725-00010	C26	7	13-0731-00005	C14	57	13-0734-00010	C9	22
13-0725-00010	C28	7	13-0731-00005	C34	7	13-0734-00010	C18	1
13-0725-00010	C30	12	13-0731-00006	C12	56	13-0734-00010	C22	34
13-0725-00016	C2	8	13-0731-00006	C14	38	13-0734-00010	C24	11
13-0725-00016	C4	8	13-0731-00006	C34	24	13-0734-00010	C26	8
13-0725-00016	C6	8	13-0731-00006	C18	5	13-0734-00010	C28	8
13-0725-00016	C7	10	13-0731-00006	C22	18	13-0734-00010	C30	13
13-0725-00016	C8	10	13-0731-00006	C24	4	13-0735-00010	C14	52
13-0725-00016	C9	10	13-0731-00006	C26	19	13-0735-00010	C16	19
13-0729-00006	C31	3	13-0731-00006	C28	19	13-0735-00010	C24	13
13-0729-00006	C34	20	13-0731-00006	C32	6	13-0735-00010	C26	10
13-0729-00006	C22	10	13-0731-00007	C16	17	13-0735-00010	C28	10
13-0729-00007	C16	14	13-0731-00007	C22	2	13-0735-00010	C30	15
13-0729-00008	C31	5	13-0731-00007	C30	10	13-0735-00012	C14	42
13-0729-00008	C32	9	13-0731-00008	C18	21	13-0736-00016	C12	7
13-0729-00012	C2	21	13-0731-00008	C22	13	13-0737-05024	C18	18
13-0729-00012	C4	21	13-0731-00008	C24	6	13-0739-02040	C12	23
13-0729-00012	C6	21	13-0731-00008	C26	3	13-0739-02040	C22	47
13-0729-00014	C12	53	13-0731-00008	C28	3	13-0739-02040	C32	1
13-0729-00016	C12	48	13-0732-00006	C12	54	13-0740-00808	C12	5
13-0729-00018	C7	14	13-0732-00006	C14	30	13-0740-00808	C22	39
13-0729-00018	C8	14	13-0732-00006	C22	44	13-0745-28018	C18	15
13-0729-00018	C9	15	13-0733-00008	C24	8	13-0747-28018	C18	26
13-0730-00005	C14	53	13-0734-00006	C34	16			

# Limited Warranty Statement

1. Meridian Manufacturing Inc warrants each new Meridian Manufacturing Inc product (the "Goods") to be free from defects in material and workmanship under normal use and service for a period of two (2) years or ninety (90) days in the case of commercial use, from the shipment date from the Meridian dealer (FCA).
2. Meridian warrants replacement parts and components either manufactured or sold by, will be free from defects in materials or workmanship under normal use and service for thirty (30) days from the shipment date from the Meridian dealer (FCA), or the remainder of the original warranty period on the Goods, whichever is longer.
3. This warranty does not apply to:
  - a) to any merchandise or components thereof, which in the sole and unfettered opinion of Meridian, have been subject to misuse, unauthorized modifications, alteration, accident, negligence, product abuse or lack of required maintenance.
  - b) if repairs have been made with parts or by persons other than those parts or persons approved by Meridian.
  - c) to parts and accessories not manufactured by Meridian including, but not limited to, engines, batteries, tires, belts, PTO shafts or other trade accessories. Such parts shall be covered by the warranty given by the actual manufacturer, if any.
  - d) to failure of parts; or failure of parts to perform due to wear under normal or excessive service conditions; or to failure due to use by the Purchaser for purposes other than originally intended at time of manufacture, including without limitation using the Goods for mixing fertilizer, etc.; or used in excess of the built specifications.
  - e) to Goods used in areas exposed to corrosive or aggressive conditions including, but not limited to, salt water from either inside or outside the Goods.
  - f) to failures or defects arising out of damage during shipment or during storage.
  - g) to materials replaced or repaired under this warranty, except to the extent of the remainder of the applicable warranty.
4. The obligation of Meridian under this warranty shall not arise unless Meridian is notified and this warranty is presented together with a written statement specifying the claim or defect within thirty (30) days after the failure is first detected or made known to the Purchaser and within: (i) two (2) years, or ninety (90) days in the case of commercial use; or (ii) thirty (30) days in the case of replacement parts and components manufactured by Meridian; from the shipment date from the Meridian dealer (FCA). Meridian in its sole and unfettered discretion shall determine if the claim is valid and whether correction of the defect or failure shall be made by repair or replacement of the materials.
5. Title to any replaced materials Meridian wishes to have pass to it, shall pass to Meridian.
6. The obligation of Meridian hereunder extends only to the original Purchaser or Buyer to whom the Goods were initially sold. This warranty shall not be subject to any assignment or transfer without the written consent of Meridian.
7. The purchaser acknowledges that it has made its own independent decision to approve the use of the Goods and also the specific fabrication and construction procedures utilized to complete the Goods, and has satisfied itself as to the suitability of these products for its use.

8. This warranty is subject to the following limitations, provisions and conditions:
- a) Meridian shall have no liability hereunder for any claims, including field re-work.
  - b) Meridian shall not be liable for any incidental loss or damage, however caused, including, without limitation, normal wear and tear.
  - c) Meridian makes no express or implied warranties of any nature whatsoever except for such express warranties as set out herein. The warranty provided herein is in lieu of and excludes all other warranties, guarantees or conditions pertaining to the Goods, written or oral, statutory, express or implied, (except the warranty as to title) including any warranty as to the merchantability or fitness for any particular purpose. Meridian expressly disclaims all other representations, conditions or warranties, expressed or implied, statutory or otherwise and any representations, warranties or conditions that may arise from a course of dealing or usage of trade. The warranty provided herein shall constitute Meridian's sole obligation and liability and the Purchaser's sole remedy for breach of warranty. No other warranty has been made by any employee, agent, or representative of Meridian and any statements contained in any other printed material of Meridian is expressly excluded herefrom. Meridian shall not be responsible for any warranty offered by the Purchaser to its customers with respect to the Goods and the Purchaser shall indemnify Meridian with respect to same if any of those customers makes a claim against Meridian relating to any such warranty.
  - d) Subject to Meridian's obligations contained in paragraphs 1 and 2 herein, none of Meridian, its officers, directors, servants or agents shall be liable, or responsible for any loss or damage (including strict liability and liability for loss or damage due to items which the manufacturing processes are designed to identify) whether such loss or damage is caused by negligence in any manner whatsoever (including gross negligence, error, misrepresentation, misstatement, imprudence, lack of skill or lack of judgement).
9. The sole financial obligation of Meridian under this warranty shall be limited to the repair or replacement of the Goods as originally supplied and in no event shall they exceed the original cost of the Goods supplied.
10. Meridian shall not have any obligation under any warranty herein until all accounts have been paid in full by the Purchaser.
11. The construction and interpretation of this Warranty shall be governed by the laws of the Province of Saskatchewan.

## **Warranty Claim Procedure**

- 1. Purchaser must register the Goods with Meridian.
- 2. Purchaser must contact the dealer where the unit was purchased from upon discovery of any defects.
- 3. A completed warranty claim form must be submitted by the dealer to Meridian's warranty representative for review and any subsequent course of action.
- 4. Warranty repair work will only be performed by Meridian or an approved representative of Meridian. No warranty work completed prior to approval by Meridian will be honored. Failure to follow procedure may affect any or all of this warranty.
- 5. Claims will be adjudicated at the sole discretion of Meridian and in accordance with the terms and conditions of the limited warranty.

# MERIDIAN MANUFACTURING INC.

With over 65 years of experience,  
Meridian is your storage and handling expert.



[www.meridianmfg.com](http://www.meridianmfg.com)

**Cambridge Office**

605 Sheldon Dr.  
Cambridge, On. N1T 2K1  
PH: 519.620.6004  
TF: 855.346.3712  
FX: 519.620.6041

**Camrose Office**

4232 - 38 St.  
Camrose, AB T4V 4B2  
PH: 780.672.4516  
TF: 800.830.2467  
FX: 780.672.4759

**Lethbridge Office**

3125 - 24 Ave. N.  
Lethbridge, AB T1H 5G2  
PH: 403.320.7070  
TF: 800.661.1436  
FX: 403.320.7579

**Regina Office**

PO Box 1996  
Regina, SK S4P 3E1  
PH: 306.545.4044  
TF: 800.667.5904  
FX: 306.545.4216

**Storm Lake Office**

2902 Expansion Blvd.  
Storm Lake, IA 50588  
PH: 712.732.1780  
TF: 800.437.2334  
FX: 712.732.1028

**Winkler Office**

Box 760, 275 Hespler Ave.  
Winkler, MB R6W 4A8  
PH: 204.325.7883  
TF: 800.665.7259  
FX: 204.325.5556