

MERIDIAN[®]

PARTS BOOK



FUEL TRAILER MODEL 990



LIMITED MATERIALS AND WORKMANSHIP WARRANTY FOR FUEL TRAILERS

Meridian Manufacturing Inc. (hereinafter referred to as the Manufacturer) hereby warrants the Fuel Trailer(s) sold by it to be free from any defect in material or workmanship under normal use and service for a period of one (1) year from the date of shipment. The Manufacturer's obligation under this warranty shall be limited to the repair or replacement only, FOB the original point of shipment, of any defective parts or portions of the fuel trailer or accessories manufactured by Meridian. Any warranty claim must be reported to the Manufacturer within one (1) year from the date of shipment.

THIS WARRANTY IS SUBJECT TO THE FOLLOWING LIMITATIONS, PROVISIONS AND CONDITIONS:

1. This warranty does not apply:
 - a. To any product sold by the Manufacturer where it is used in areas exposed to corrosive or aggressive conditions including salt water, acids, alkaloid, ash, cement dust, animal waste or other corrosive chemicals from either inside or outside the bin.
 - b. For failures or defects arising out of damage during shipment or during storage on site.
 - c. To materials replaced or repaired under this warranty except to the extent of the remainder of the applicable warranty.
 - d. To damage resulting from misuse, negligence, accident or improper site preparation by others.
 - e. If the product has been altered or modified by others.
 - f. If in the case of coating failures the failure is the result of damage, lack of proper maintenance or failure to remove road salt or other contaminants that may have come in contact with the bin surface.
 - g. To loss of time, inconvenience, loss of material, down time or any other consequential damage.
 - h. For a function that is different than original designed intent.
2. The obligation of the Manufacturer under this warranty shall not arise unless the Manufacturer is notified and this warranty is presented together with a written statement specifying the claim or defect within thirty (30) days after the failure is first detected or made known to the owner and within one (1) year from the shipment date. The Manufacturer in its sole discretion shall determine if the claim is valid and whether correction of the defect or failure shall be made by repair or replacement of the materials.
3. The coating warranty is based on the manufacturer's performance specification for Polyester Powder finishes and does not include repair of minor blemishes or rusting that is normally part of the general maintenance of the fuel trailer. This warranty does not cover excessive wear on interior coatings. See attachment for full Performance Specification details on Polyester Powder Finishes.
4. The obligation of the Manufacturer hereunder extends only to the original owner and to the Meridian dealer to whom the materials may have been initially sold. This warranty shall not be subject to any assignment or transfer without the written consent of the Manufacturer.
5. The customer shall acknowledge that it has made its own independent decision to approve the use of the supplied materials and also the specific fabrication and construction procedures utilized to complete the fuel trailer, and has satisfied itself as to the suitability of these products for this particular application.
6. The foregoing sets forth the only warranties applicable to said materials and said warranties are given expressly and in lieu of all other warranties, expressed or implied, statutory or otherwise, of merchantability or fitness for a particular purpose and all warranties which exceed or differ from said warranties herein are disclaimed by the Manufacturer.
7. The owners sole and exclusive remedy against the Manufacturer shall be limited to the applicable warranty set forth herein and the endorsements, if any, issued together with this document and no other remedy (including but not limited to the recovery of assembly or disassembly costs, shipping costs, direct, incidental, special, indirect or consequential damages for lost profits, lost sales, injury to person or property or any other loss, whether arising from breach of contract, breach of warranty, tort, including negligence, strict liability or otherwise) shall be available to the owner or Meridian Dealer or any other person or entitles whether by direct action or for contribution or indemnity or otherwise.
8. The financial obligation of the Manufacturer under this warranty shall be limited to the repair or replacement of the product as originally supplied and in no event shall exceed the original cost of the product supplied.
9. The Manufacturer shall not have any obligation under any warranty herein until all accounts for materials, installation and erection of the said product thereof and for labor and other work performed by the Manufacturer or its dealers have been paid in full by the owner.

Warranty Claim Procedure:

1. Registering product with Meridian Manufacturing.
2. Contact the dealer unit was purchased from upon discovery of any defects.
3. A completed warranty claim form submitted by dealer to Meridian warranty representative for review and course of action.
4. Warranty repair work will only be performed by Meridian, the dealer or an approved representative. No warranty work completed prior to approval. Failure to follow procedure may affect any or all reimbursement.
5. Claims will be adjudicated at the sole discretion of the manufacturer and in accordance with the terms and conditions of the applicable limited warranty.
6. A complete list of warranty procedures can be procured from the Warranty Department or found in your operator's manual.

Note:

The electronic version of the Operator's Manual, does not contain drawings and schematics. They are contained in this book.

FUEL TRAILER CAPS AND GAUGES

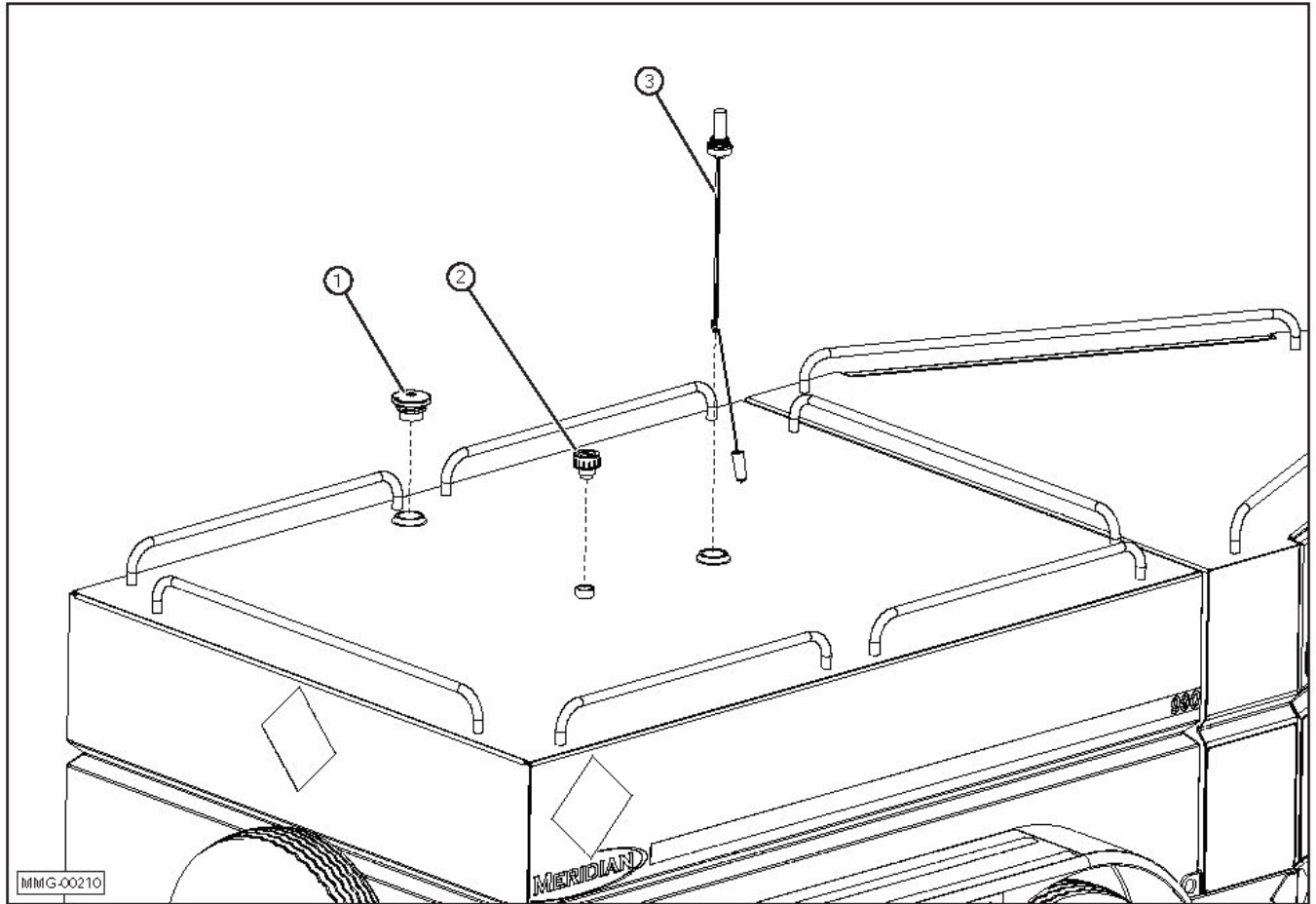


Table 1 - FUEL TRAILER CAPS AND GAUGES

ITEM	QTY.	PART NO.	DESCRIPTION
1	1	11527	2" NPT VAPOR CONTROL CAP (60001 CIM TEK)
2	1	11212	BREATHER CAP (AS-NY-7-20-10M)
3	1	11211	KRUEGER SENTRY THERMA GAUGE (H-2-36-SSR)

TANK ASSEMBLY 990 US FUEL TRAILER

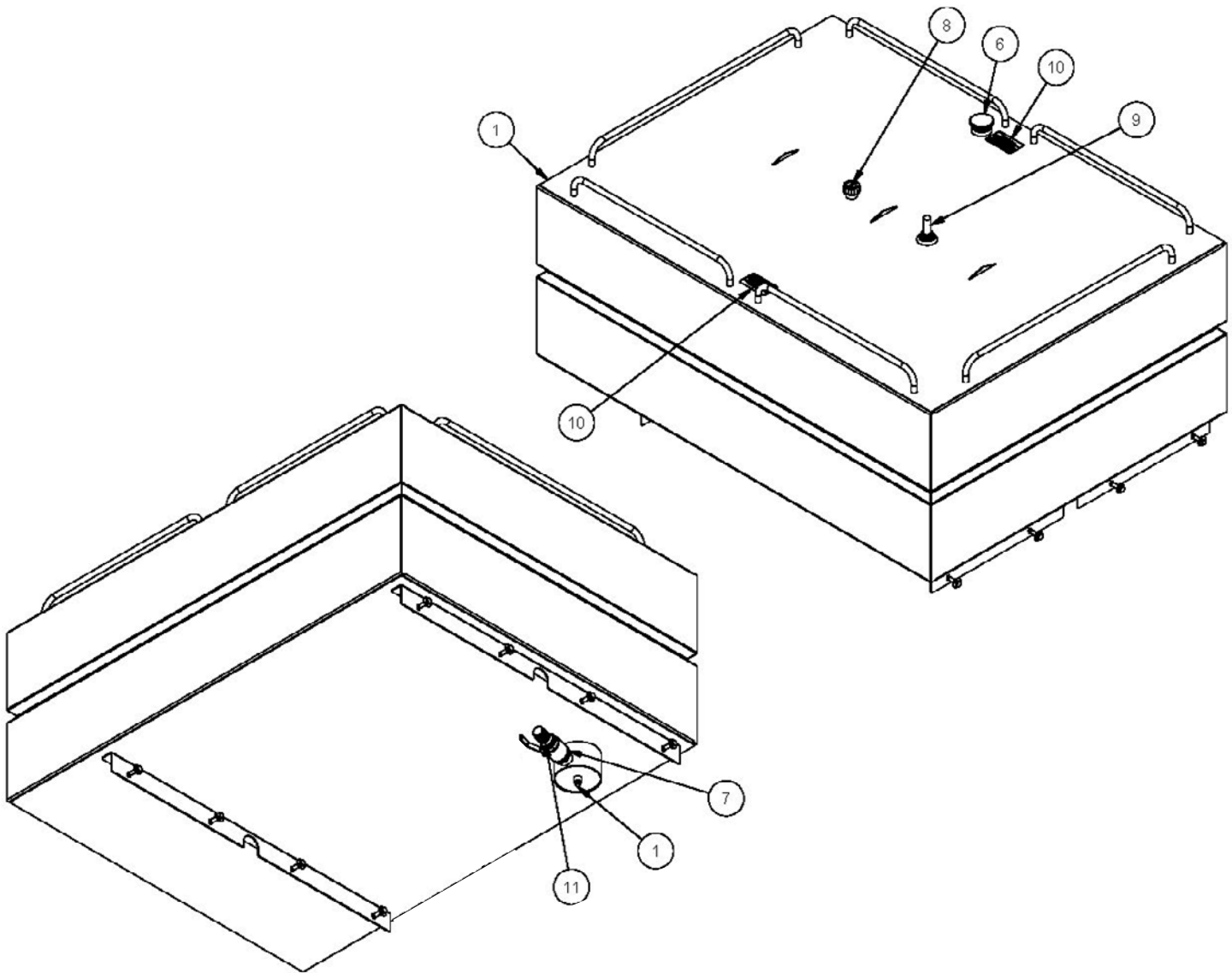


Table 2 - TANK ASSEMBLY 990 US FUEL TRAILER

ITEM	QTY	MASS	PART #	DESCRIPTION
1	1	1521.449 lb mass	32431	TANK WELDMENT 990 US STANDARD
2	16	0.059 lb mass	19384	Ø5/8" FLAT WASHER
3	8	0.083 lb mass	19382	Ø5/8"-11 UNC HEX NUT
4	8	0.026 lb mass	18460	Washer, Helical Spring Lock 5/8 Steel, Mild
5	8	0.409 lb mass	17589	BOLT, HEX, 5/8-11 UNC X 3.5 Steel, Mild
6	1	1.423 lb mass	11527	2" NPT VAPOR CONTROL CAP (60001 CIM TEK)
7	1	0.773 lb mass	11224	2" BRASS BALL VALVE
8	1	0.423 lb mass	11212	BREATHER CAP (AS-NY-7-20-10M)
9	1	3.811 lb mass	11211	KRUEGER SENTRY THERMA GAUGE (H-2-36-SSR)
10	2	0.001 lb mass	11110	DECAL CAUTION TANK ROOF NOT LOAD SURFACE
11	1	0.991 lb mass	10552	FITTING, HOSE BARB, 2" X 2" NPT, STEEL ZINC

TRAILER ASSEMBLY 990 UNIVERSAL TANDEM STW

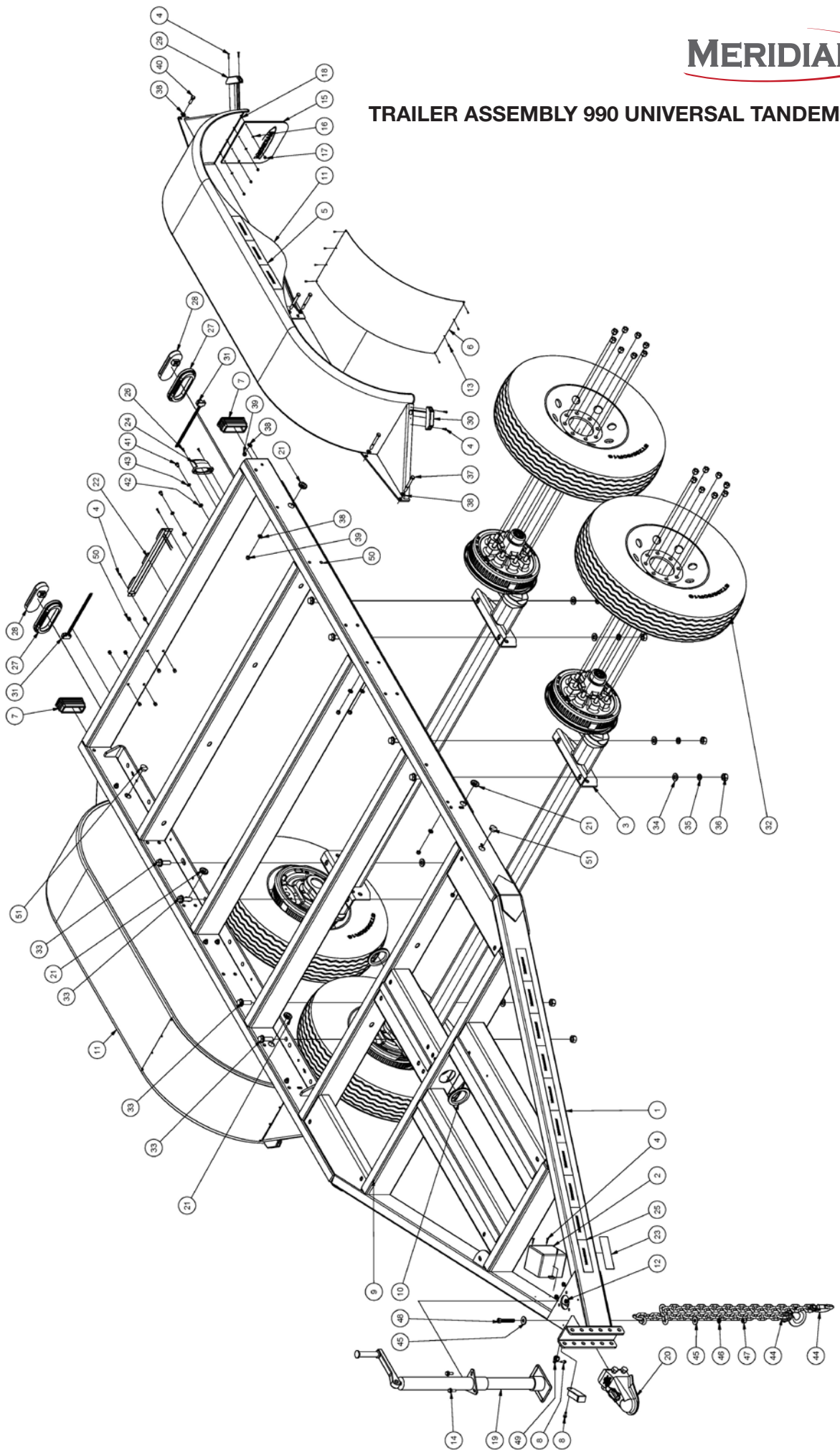


Table 3 - TRAILER ASSEMBLY 990 UNIVERSAL TANDEM STW

ITEM	QTY	MASS	PART #	DESCRIPTION
1	1	554.338 lb mass	32038	FRAME WELDMENT- 990TC FUEL TRAILER
2	1	3.703 lb mass	19275	BATTERY BREAKAWAY BA10-150
3	2	14.586 kg	18193	7000 LBS AXLE, 89.125" HUB FACE, 9" HOLES
4	13	0.003 kg	19779	#8-18 x 3/4" SELF DRILLING ZINC SCREW
5	2	0.051 lb mass	22965	TAPE, REFLECTIVE, MERIDIAN R & W 2x6x6X 18"L
6	2	2.082 lb mass	22990	FENDER, ALUM ROCK GUARD, TANDEM, 14"
7	2	0.263 lb mass	19619	5" x 2" TUBE PLUG
8	2	0.019 lb mass	19597	Ø1/4"-14 x 3/4" HEX WASHER HEAD SELF DRILLING SCREW
9	60' 6"	13.815 lb mass	17672	3/8"x1 1/2" CELLULAR RUBBER STRIPPING (60' 6")
10	48 IN	0.050 lb mass	14062	NEOPRENE EDGING
11	2	66.720 lb mass	22903	FENDER WELDMENT- TANDEM AXLE 14" W
12	3	0.023 lb mass	19564	NUT, HEX, FLANGED, 3/8-16 UNC
13	16	0.001 lb mass	17023	RIVET, Ø1/8" (.126" - .187" GRIP) #30 DBS, SS
14	3	0.069 lb mass	19569	BOLT, HEX, FLANGED, 3/8-16 UNC X 1
15	2	0.824 lb mass	19274	Mud Flap, 10"x10"x1/4" THK, w/MERIDIAN LOGO
16	8	0.001 lb mass	19629	WASHER, FLAT, #8
17	8	0.005 lb mass	19112	#8-32 UNC HEX NYLON NUT
18	8	0.005 lb mass	19141	Screw #8-32 UNF x 5/8 Round Head Pan
19	1	37.477 lb mass	18192	TOP WIND A-FRAME JACK (5000 lb CAP)
20	1	22.667 lb mass	24688	COUPLER HITCH ASSM. 2 5/16" W/SFTY PIN
21	7	0.010 lb mass	17065	GROMMET, Ø1 1/8" X . Ø3/4" ID
22	1	2.362 lb mass	11554	LED STRIP LIGHT (TRUCK-LITE 15050R)
23	1	0.002 lb mass	17532	DECAL, TRAILER VIN# TEMPLATE
24	1	0.073 lb mass	17674	LIGHT, LICENSE PLATE, SAE L 02, KAPER II
25	2	0.169 lb mass	17680	TAPE, REFLECTIVE, MERIDIAN R & W 2x6x6 x 60"L
26	2	0.002 kg	17673	SCREW, #10-16 X 5/8", FH SELF TAPPING, PHILLIPS
27	2	0.128 lb mass	17671	GROMMET TAIL LIGHT (TRUCK-LITE 60700)
28	2	0.552 lb mass	17670	TAIL LIGHT LED OVAL RED (TRUCK-LITE 6050)
29	2	0.113 lb mass	17669	RED CLEARANCE LIGHT LED (TRUCK-LITE 3550)
30	2	0.113 lb mass	17668	YEL CLEARANCE LIGHT LED (TRUCK-LITE 3550A)
31	2	0.035 lb mass	10045	PLUG, S/T/T, 11" (TRUCK-LITE 94993-3)
32	4	63.000 lb mass	18131	ST235/80R16-E TIRE, STEEL RIM ASSEMBLY
33	8	0.340 lb mass	19567	BOLT, HEX, FLANGED, 5/8-11 UNC X 2 GRADE 8
34	8	0.049 lb mass	17787	WASHER, FLAT 5/8
35	8	0.026 lb mass	18460	Washer, Helical Spring Lock 5/8 Steel, Mild
36	8	0.130 lb mass	18489	NUT, HEX, HEAVY 5/8 - 11
37	10	0.127 lb mass	10069	BOLT, HEX, 3/8-16 UNC X 3.25 Steel, Mild
38	24	0.009 lb mass	19348	WASHER, FLAT 3/8
39	12	0.02058 lb mass	19347	Ø3/8"-16 UNC NYLON LOCKNUT
40	2	0.060 lb mass	19299	BOLT, HEX, 3/8-16 UNC X 1.25 Grade 8
41	2	0.023 lb mass	19662	Ø5/16"-18 UNC x 1/2" H.H.C.S.
42	2	0.006 lb mass	19321	WASHER, FLAT 5/16
43	2	0.004 lb mass	19322	Washer, Helical Spring Lock 5/16 Steel, Mild
44	2	4.897 lb mass	19171	3/8" x 35" , GRADE 70 SAFETY CHAIN (26400# CAPACITY)
45	2	0.038 lb mass	18487	Washer, 1/2 - wide - Type A Steel, Mild
46	1	0.014 lb mass	19373	Ø1/2" LOCK WASHER
47	1	0.051 lb mass	17234	NYLON LOCK NUT, 1/2"-13, GRADE 8, ZINC
48	1	0.183 lb mass	10278	BOLT HEX 1/2"-13 FULL x 3" L GRADE 5 ZINC
49	1	0.045 lb mass	18679	CLAMP CUSHIONED LOOP (1/2")
50	44	0.002 lb mass	17255	PLUG TUBE ROUND Ø1/2" (16-20GA) (.065"-.035")
51	3	0.005 lb mass	10555	PLUG RD 1-1/8" HOLE 0.016-0.125" SHEET NYLON
52	8	FT 1.000 lb mass	17019	1/2" HEAT SHRINK POLYOLEFIN BLACK 2:1 WAYTECH 22438C

FUEL TRAILER 990 US VERSION BONE WHITE EMPTY

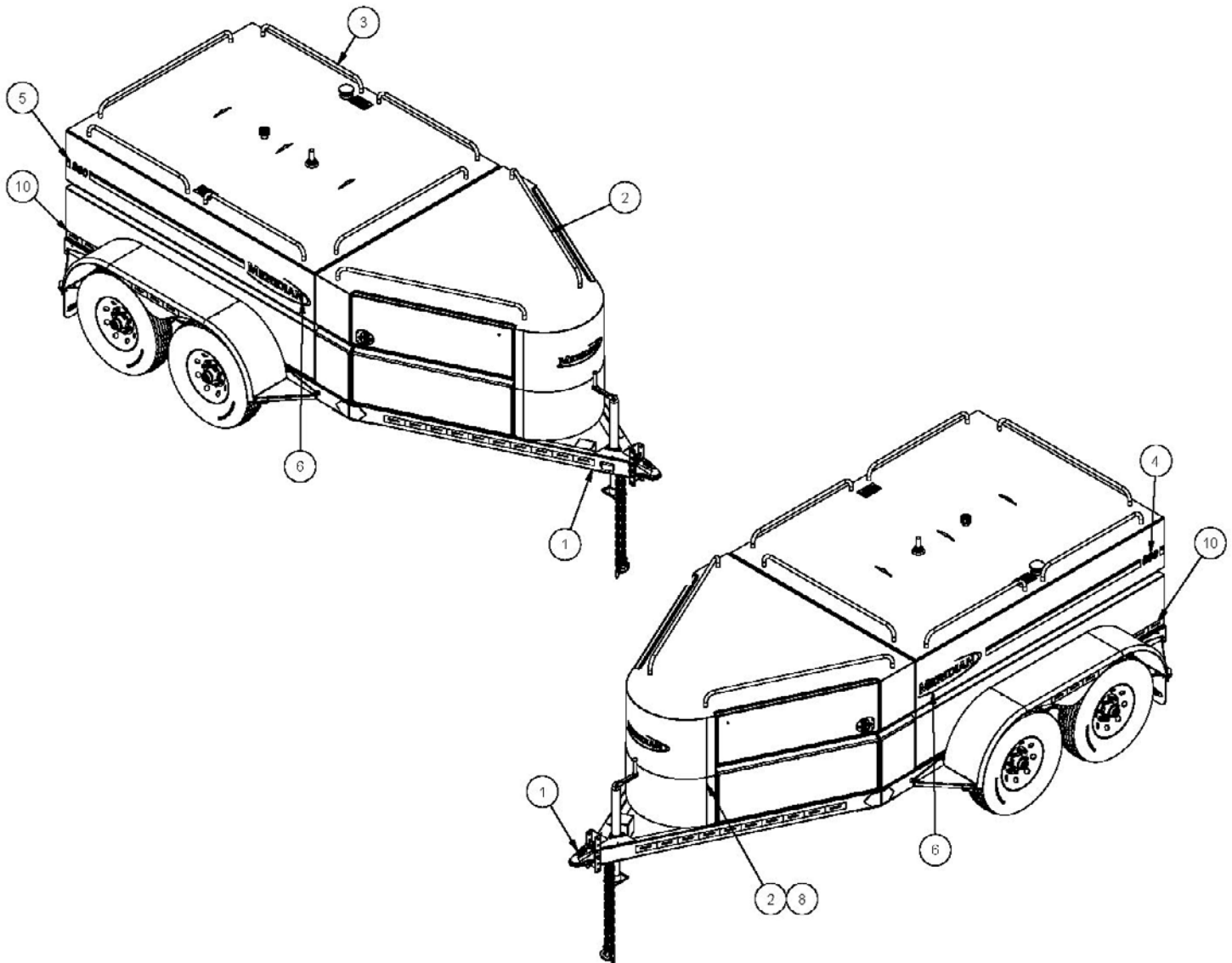


Table 4 - FUEL TRAILER 990 US VERSION BONE WHITE EMPTY

ITEM	QTY	MASS	PART #	DESCRIPTION
1	1	1110.474 lb mass	30088	TRAILER ASSM. 990 UNIVERSAL TANDEM STW
2	1	482.690 lb mass	32437	BW COWLING ASSEMBLY, 990 FUEL TRAILERS
3	1	1533.958 lb mass	42616	BW TANK ASSEMBLY 990 US FUEL TRAILER
4	1	0.186 lb mass	11530	990 - RIGHT SIDE TANK DECAL (BLACK)
5	1	0.186 lb mass	11531	990 - LEFT SIDE TANK DECAL (BLACK)
6	2	0.033 lb mass	17507	24" MERIDIAN DECAL (ALL BLACK)
7	1	0.015 lb mass	17728	MERIDIAN TRAILER BLACK DECAL
8	4	0.018 lb mass	11514	1993 PLACARD
9	1	0.197 lb mass	17679	TAPE, REFLECTIVE, MERIDIAN R & W 2x6x6 x 70"L
10	2	0.033 lb mass	17676	TAPE, REFLECTIVE, MERIDIAN R & W 2x6x6 x 12"L
11	1	0.000 lb mass	14091	Wire Harness 990 Fuel Trailer - V2 ROWE (NOT SHOWN)

12 VDC PUMP & 35' HOSE REEL PKG 990 US

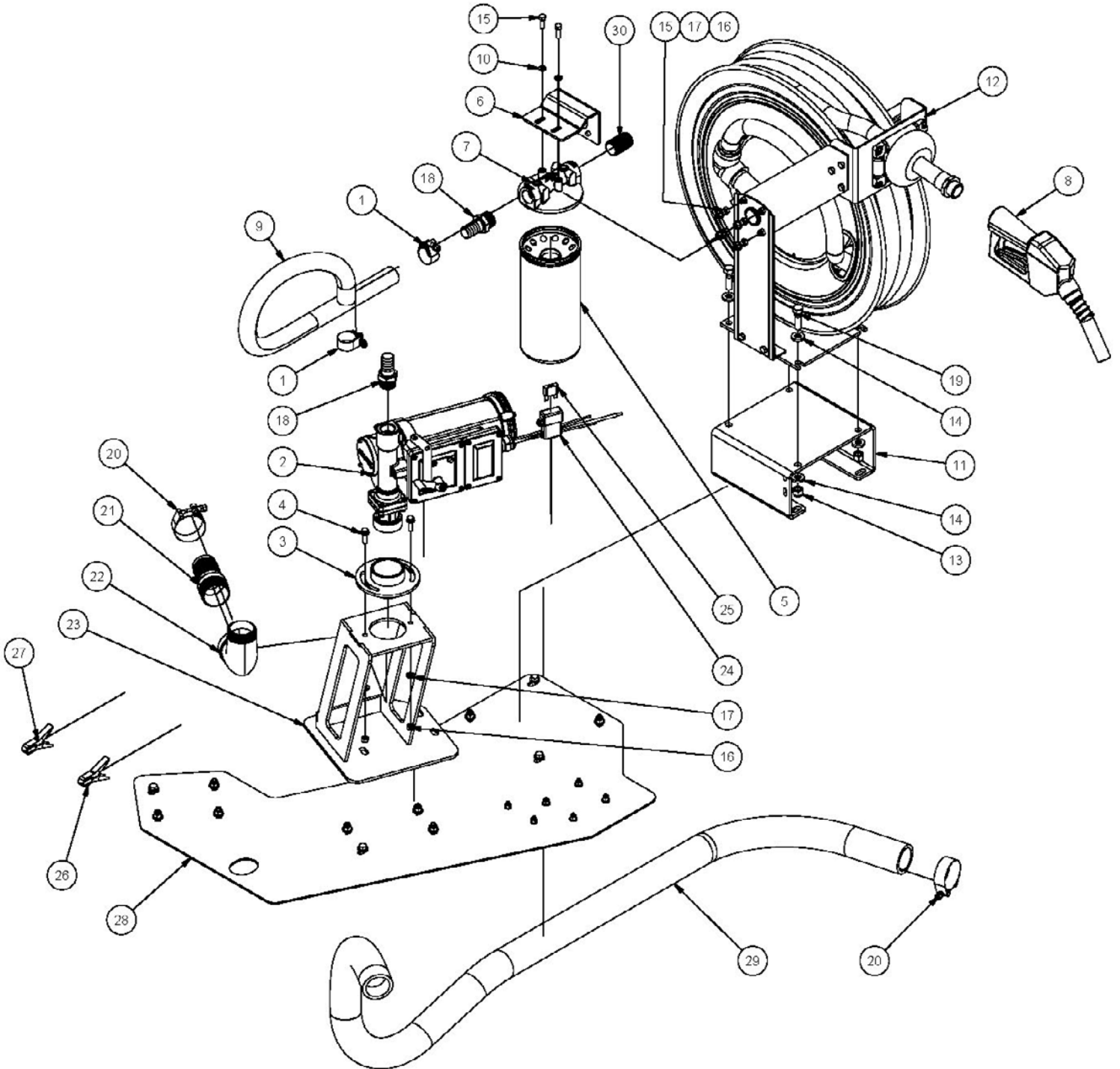


Table 5 - 12 VDC PUMP & 35' HOSE REEL PKG 990 US

ITEM	QTY	MASS	PART #	DESCRIPTION
1	2	0.118 lb mass	11513	CLAMP T-BOLT 1.375"-1.5625" KURIYAMA TBC-SSC039
2	1	30.000 lb mass	11500	DIESEL PUMP - 12V DC 25 GPM [FILL-RITE]
3	1	1.869 lb mass	32439	COUPLER WELDMENT - 12V DC DIESEL PUMP MOUNT
4	2	0.045 lb mass	19581	BOLT, HEX, FLANGED, 5/16-18 UNC X 1
5	1	3.033 lb mass	11220	DIESEL FILTER - 40 GPM-50 PSI 10 MICRON
6	1	1.764 lb mass	23913	FILTER HEAD MOUNT [50 FT HOSE REEL]
7	1	1.108 lb mass	25173	FILTER HEAD 1" NPT FOR F40 FILTER (700ACCF7017)
8	1	5.750 lb mass	21020	DIESEL NOZZLE 1" OUTLET [FILL-RITE] GREEN
9	1	1.172 lb mass	17518	HOSE, DIESEL, 1" ID, PUMA (12V PMP TO FILTER)
10	2	0.004 lb mass	19322	Washer, Helical Spring Lock 5/16 Steel, Mild
11	1	13.645 lb mass	25178	DIESEL HOSE REEL MOUNT 990
12	1	95.000 lb mass	11205	DIESEL HOSE REEL 35' [COX REEL]
13	4	0.053 lb mass	19127	Ø1/2"-13 UNC HEX NYLON LOCKNUT
14	8	0.033 lb mass	19372	WASHER, FLAT 1/2
15	6	0.036 lb mass	19310	BOLT, HEX, 5/16-18 UNC X 1 Steel, Mild
16	6	0.01468 lb mass	19586	Ø5/16"-18 UNC NYLON LOCK NUT
17	6	0.006 lbmass	19321	WASHER, FLAT 5/16
18	2	0.377 lb mass	17222	HOSE BARB, 1" HOSE ID X 1" NPT MALE, ZINC
20	2	0.159 lb mass	11521	CLAMP T-BOLT 2.375"-2.5625" KURIYAMA TBC-SS063
21	1	0.991 lb mass	10552	FITTING, HOSE BARB, 2" X 2" NPT, STEEL ZINC
22	1	2.139 lb mass	10554	ELBOW STREET 2" NPT 90 DEG FEMALE x MALE STEEL
19	4	0.149 lb mass	10411	BOLT, HEX, 1/2-13 UNC X 1.75 Steel, Mild
23	1	15.851 lb mass	40656	12V DIESEL PUMP MOUNT EXTENDED PAINTED BLK
24	1	0.144 lb mass	17026	MAXI FUSE HOLDER, AWG 8, 60A MAX
25	1	0.012 lb mass	17027	MAXI Blade Fuse 50 Amp Red
26	1	0.004 lb mass	10233	BATTERY CLAMP MINI RED 50 AMPS WAYTEK#46R
27	1	0.004 lb mass	10234	BATTERY CLAMP MINI BLK 50 AMPS WAYTEK#46B
28	1	29.574 lb mass	40029	COWLING TRAY 990 ASSEMBLY
29	1	5.489 lb mass	51562	Diesel Fuel Suction Hose Ø2" ID x 84" Long
30	1	0.187 lb mass	17523	FITTING, PIPE NIPPLE, 1" NPT X 2" LONG, MS

40 GPM ENGINE/PUMP & 35' HOSE REEL PKG 990 US

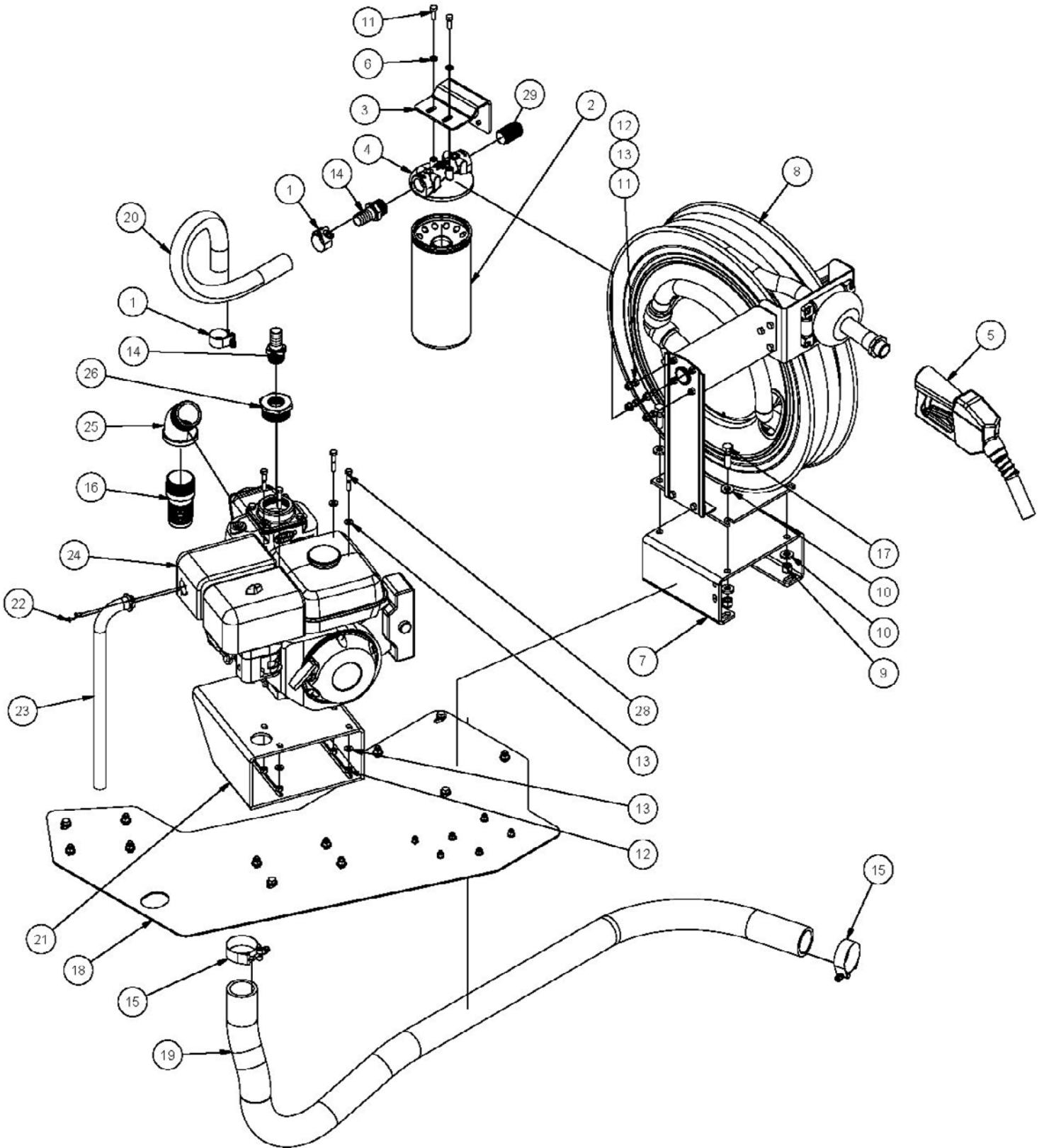


Table 6 - 40 GPM ENGINE/PUMP & 35' HOSE REEL PKG 990 US

ITEM	QTY	MASS	PART #	DESCRIPTION
1	2	0.118 lb mass	11513	CLAMP T-BOLT 1.375"-1.5625" KURIYAMA TBC-SSC039
2	1	3.033 lb mass	11220	DIESEL FILTER - 40 GPM-50 PSI 10 MICRON
3	1	1.764 lb mass	23913	FILTER HEAD MOUNT [50 FT HOSE REEL]
4	1	1.108 lb mass	25173	FILTER HEAD 1" NPT FOR F40 FILTER (700ACCF7017)
5	1	5.750 lb mass	21021	DIESEL NOZZLE 1" ULTRA HI-FLOW GREEN
6	2	0.004 lb mass	19322	Washer, Helical Spring Lock 5/16 Steel, Mild
7	1	13.645 lb mass	25178	DIESEL HOSE REEL MOUNT 990
8	1	95.000 lb mass	11205	DIESEL HOSE REEL 35' [COX REEL]
9	4	0.053 lb mass	19127	Ø1/2"-13 UNC HEX NYLON LOCKNUT
10	8	0.033 lb mass	19372	WASHER, FLAT 1/2
11	6	0.036 lb mass	19310	BOLT, HEX, 5/16-18 UNC X 1 Steel, Mild
12	8	0.01468 lb mass	19586	Ø5/16"-18 UNC NYLON LOCK NUT
13	12	0.006 lb mass	19321	WASHER, FLAT 5/16
14	2	0.377 lb mass	17222	HOSE BARB, 1" HOSE ID X 1" NPT MALE, ZINC
15	2	0.159 lb mass	11521	CLAMP T-BOLT 2.375"-2.5625" KURIYAMA TBC-SS063
16	1	0.991 lb mass	10552	FITTING, HOSE BARB, 2" X 2" NPT, STEEL ZINC
17	4	0.149 lb mass	10411	BOLT, HEX, 1/2-13 UNC X 1.75 Steel, Mild
18	1	29.574 lb mass	40029	COWLING TRAY 990 ASSEMBLY
19	1	4.919 lb mass	24686	Diesel Fuel Suction Hose Ø2" ID x 72" Long
20	1	0.800 lb mass	17516	HOSE, DEISEL, 1" ID, PUMA (PUMP TO FILTER, GAS)
21	1	18.967 lb mass	32444	ENGINE/PUMP MOUNT WELDMENT 990
22	2	0.005 lb mass	19699	No. 8 - 32 x 1/2" SELF DRILLING SCREW
23	1	1.411 lb mass	32441	ENGINE EXHAUST MANIFOLD WELDMENT
24	1	60.000 lb mass	10549	Engine, Lifan 7HP, Pump MP-40 GPM
25	1	1.757 lb mass	10551	ELBOW STREET 2 NPT 45 DEG FEMALE x MALE STEEL
26	1	1.221 lb mass	10553	REDUCER, 2" NPT to 1" NPT, STEEL
27	1	2.144 lb mass	11532	BATTERY CABLE SET (45") (NOT SHOWN)
28	4	0.054 lb mass	19580	BOLT HEX 5/16"-18 UNC X 1.75" Steel Zinc GR. 5
29	1	0.187 lb mass	17523	FITTING, PIPE NIPPLE, 1" NPT X 2" LONG, MS
30	0.16	0.000 lb mass	14022	MOTOR OIL 10W-30 (GAL)

55 GAL DEF OPTION ASSEMBLY FUEL TRAILER 990

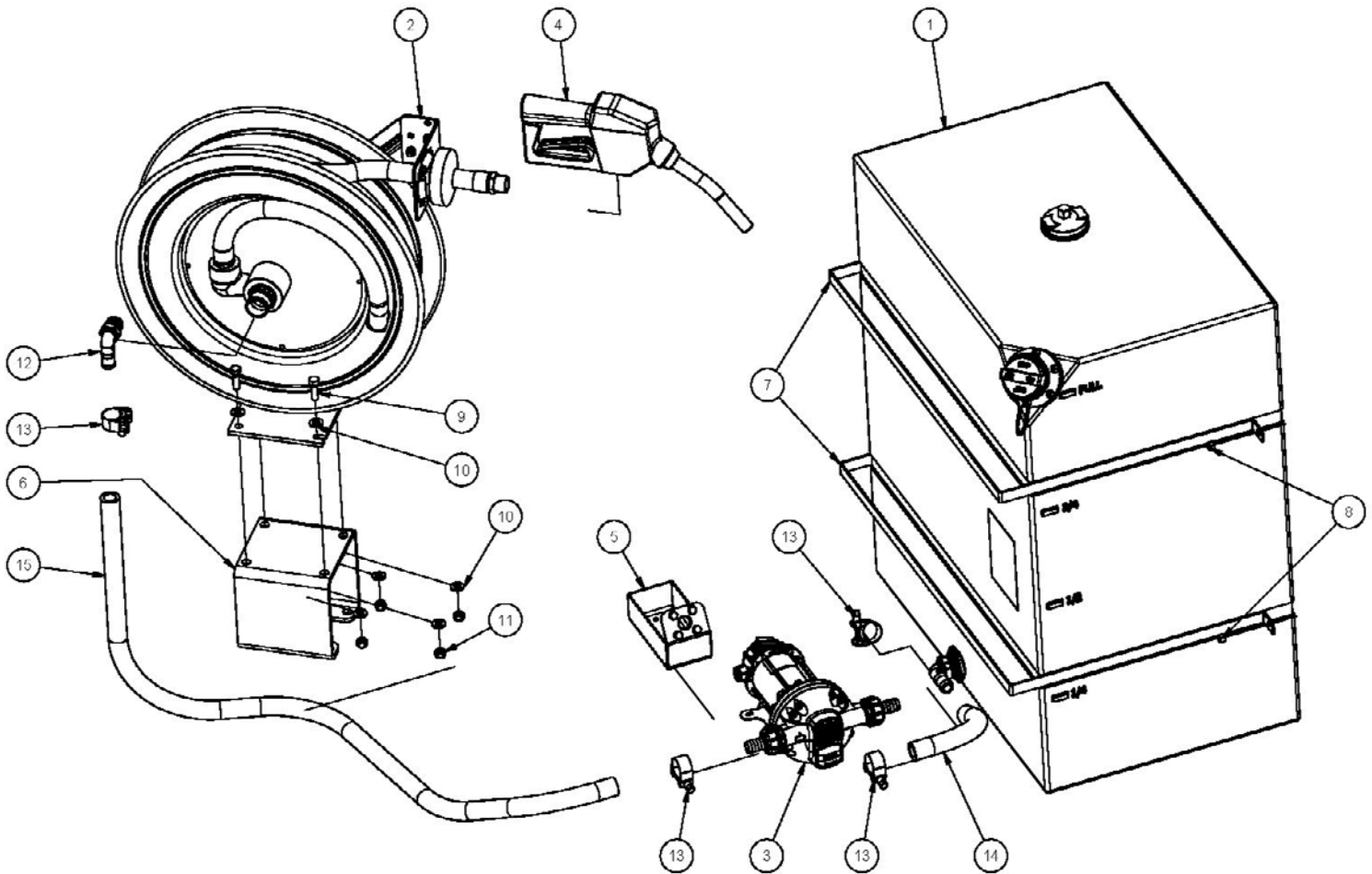


Table 7 - 55 GAL DEF OPTION ASSEMBLY FUEL TRAILER 990

ITEM	QTY	MASS	PART #	DESCRIPTION
1	1	37.706 lb mass	32097	DEF TANK ASSEMBLY, 55 GAL, PLASTIC
2	1	57.000 lb mass	11502	DEF HOSE REEL 25' [COX REEL]
3	1	10.000 lb mass	17014	PUMP MEMBRANE 12V DC DEF PIUSI #F0020400A
4	1	4.800 lb mass	11207	NOZZLE DEF 3/4" OUT, 3/4" NPT (OPW19DEF0500)
5	1	1.373 lb mass	32430	DEF NOZZLE HOLSTER ASSEMBLY
6	1	8.316 lb mass	50271	HOSE REEL MOUNT - DEF
7	2	1.390 lb mass	24307	TANK STRAP 990 DEF TANK
8	4	0.012 lb mass	19128	Ø1/4"-20 UNC NYLON HEX NUT
9	4	0.060 lb mass	19326	BOLT, HEX, 3/8-16 UNC X 1.25 Steel, Mild
10	8	0.009 lb mass	19348	WASHER, FLAT 3/8
11	4	0.02058 lb mass	19347	Ø3/8"-16 UNC NYLON LOCKNUT
12	1	0.054 lb mass	10163	ELBOW, 90 DEG, 3/4" NPT x 3/4" HOSE BARB, POLY
13	4	0.120 lb mass	10018	Clamp T-Bolt (1-5/32" - 1-7/32") Mc Master #5443K17
14	1	0.195 lb mass	51561	HOSE DEF 3/4" ID x 10" SUCTION 990 TANK-PUMP
15	1	1.041 lb mass	51560	HOSE DEF 3/4" ID x 54" SUCTION 990 PUMP-REEL

DEF TANK ADD-ON PACKAGE (55 GAL)

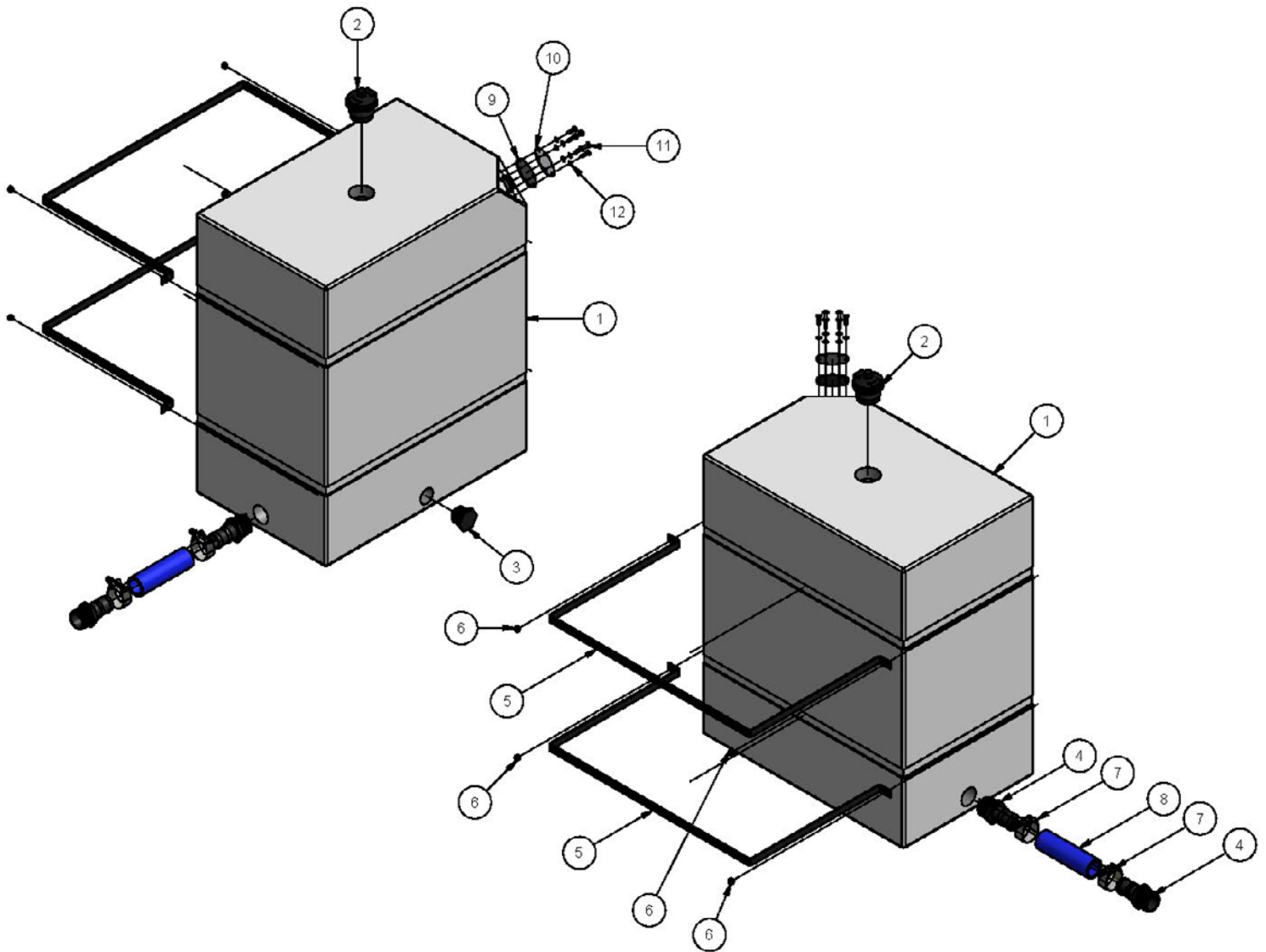


Table 8 - DEF TANK ADD-ON PACKAGE (55 GAL)

ITEM	QTY	MASS	PART #	DESCRIPTION
1	1	33.007 lb mass	11542	55+ GAL DEF TANK
2	1	2.576 lb mass	11213	Ø2" NPS DUAL ACTION VENT (4 psi)
3	1	0.086 lb mass	17354	PLUG 1 1/4" NPT SCH80
4	2	0.127 lb mass	17352	HOSE BARB 1.5" X 1.5" NPT SCH80
5	2	1.390 lb mass	24307	TANK STRAP 990 DEF TANK
6	4	0.012 lb mass	19128	Ø1/4"-20 UNC NYLON HEX NUT
7	2	0.145 lb mass	17380	CLAMP T-BOLT 1.875"-2.0625" KURIYAMA TBC-SS051
8	1	0.282 lb mass	24292	HOSE DEF 1.5" ID BLUE (TANK TO TANK 110 GAL)
9	1	0.028 lb mass	17355	DEF TANK SEAL GASKET
10	1	0.150 lb mass	24293	DEF TANK SEAL PLATE
11	6	0.018 lb mass	17768	1/4"-20 UNC x 3/4" SS H.H.C.S.
12	6	0.002 lb mass	17767	1/4" SS FLAT ASHER

FRONT ENGINE/PUMP COMPARTMENT

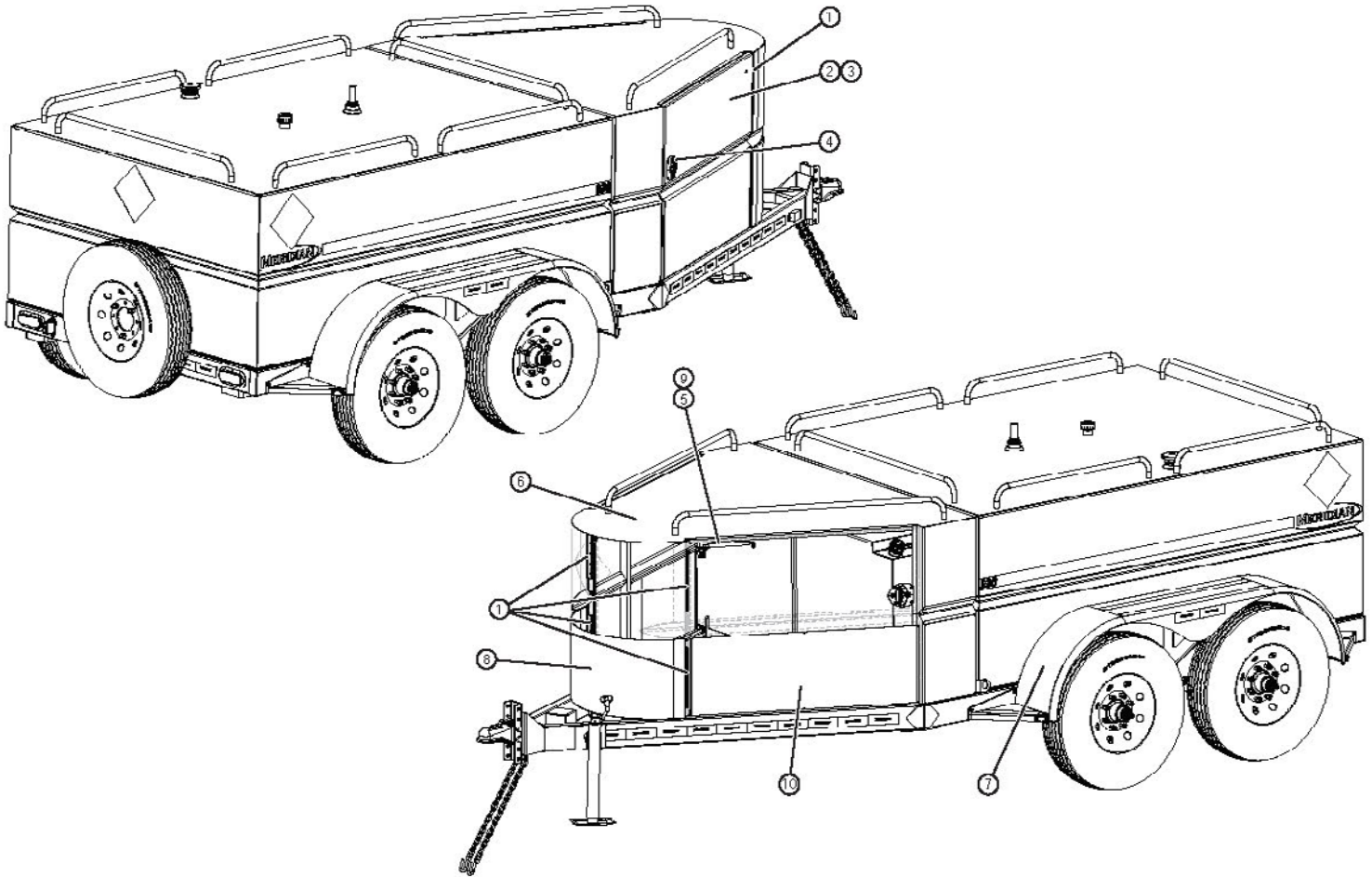


Table 9 - FRONT ENGINE/PUMP COMPARTMENT

ITEM	QTY	PART NO.	DESCRIPTION
1	4	11222	SS HINGE ASSY (1" X 12" L DRILLED)
	48	17042	CAPSCREW #6-32 X 5/8" 18-8 SS FHSS
	48	17043	#6 WASHER X 5/16" OD 18-8 SS
	48	17044	NUT HEX # 6-32 18-8 SS NYLONLOCKNUT
2	1	32436	DS DOOR WELDMENT
3	1	32435	PS DOOR WELDMENT
4	2	11223	VECTOR T-HANDLE - ZINC HANDLE FINISH
5	4	11206	30 lb GAS SHOCK/SPRING 15.24" EXT
6	2	24990	BUTTON SWITCH MOUNT
	2	11526	BUTTON SWITCH
	1	11505	36" - SELF-ADHESIVE, LED STRIP
	1	11525	COWLING WIRE HARNESS
7	2	24956	ALUM. ROCK GUARD - SIDE PANEL
8	1	24954	ALUM. ROCK GUARD - NOSE
9	8	19318	NUT, HEX, FLANGED, 5/16-18 UNC
10	2	24955	ALUM. ROCK GUARD - DOOR

UTILITY BOX ADD-ON ASSEMBLY 990 US

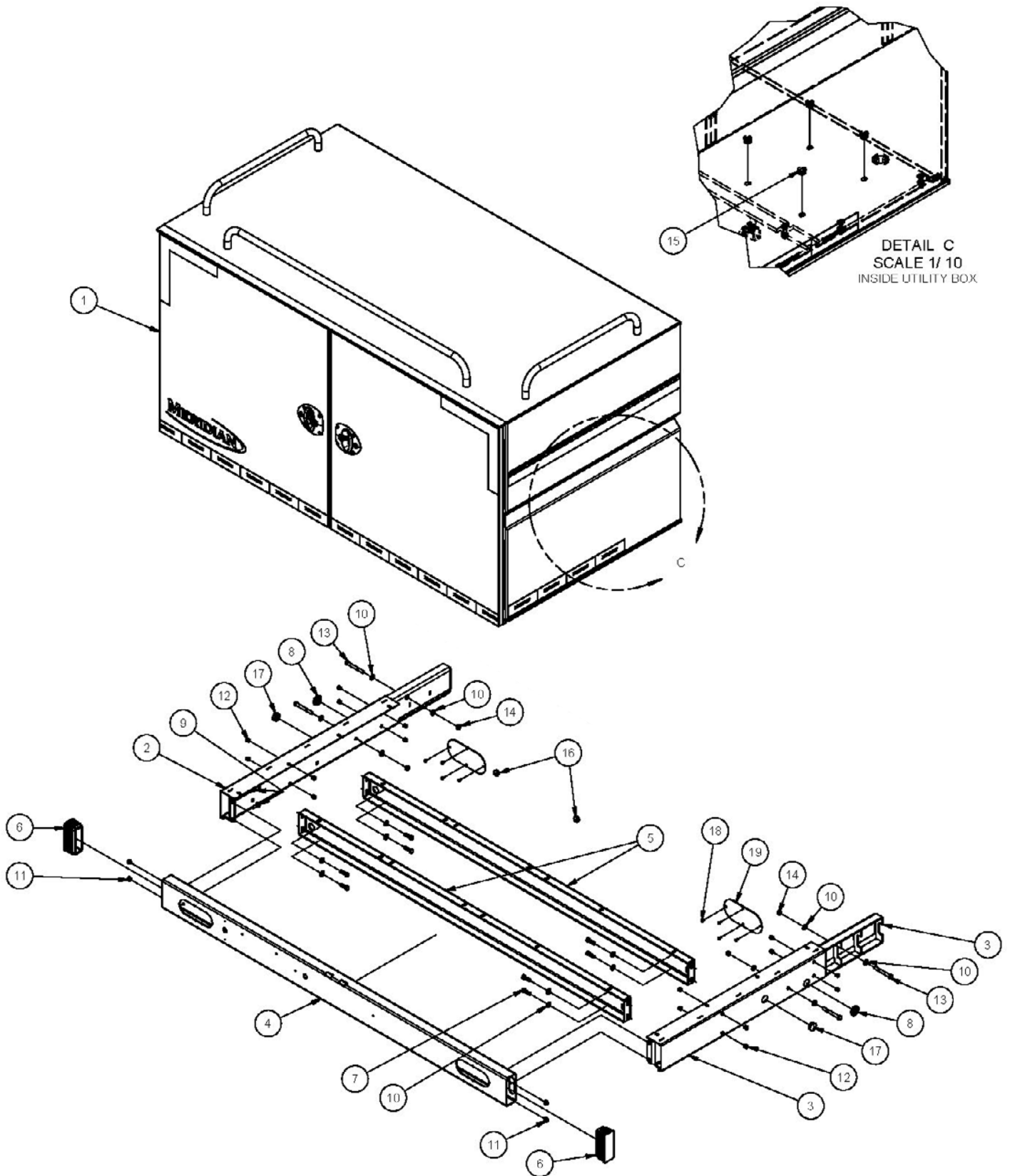


Table 10 - UTILITY BOX ADD-ON ASSEMBLY 990 US

ITEM	QTY	MASS	PART #	DESCRIPTION
1	1	403.194 lb mass	68725	UTILITY BOX ASSEMBLY, 990
2	1	24.004 lb mass	22904	RAIL MOUNT WELDMENT, LEFT, UTILITY BOX
3	1	24.004 lb mass	22905	RAIL MOUNT WELDMENT, RIGHT, UTILITY BOX
4	1	30.601 lb mass	22788	REAR TUBE FOR UTILITY BOX FRAME, 990TC
5	2	22.082 lb mass	22984	STIFFENER, CROSS, FRAME, UTILITY BOX
6	2	0.263 lb mass	19619	5" x 2" TUBE PLUG
7	8	0.000 lb mass	11551	CAP SCREW 3/8"-16 UNC x 1.25" W/LOCTITE
8	2	0.010 lb mass	17065	GROMMET, Ø1 1/8" X . Ø3/4" ID
9	4	0.045 lb mass	19581	BOLT, HEX, FLANGED, 5/16-18 UNC X 1
10	16	0.009 lb mass	19348	WASHER, FLAT 3/8
11	4	0.016 lb mass	19318	NUT, HEX, FLANGED, 5/16-18 UNC
12	16	0.002 lb mass	17255	PLUG TUBE ROUND Ø1/2" (16-20GA) (.065"-.035")
13	4	0.127 lb mass	10069	BOLT, HEX, 3/8-16 UNC X 3.25 Steel, Mild Grade 8
14	4	0.02058 lb mass	19347	Ø3/8"-16 UNC NYLON LOCKNUT
15	4	0.005 lb mass	17256	PLUG TUBE ROUND Ø3/4" (14-20GA) (.083"-.035")
16	2	0.004 lb mass	10275	PLUG RD NYLON Ø3/4" HOLE 0.016"-0.125" SHEET
17	2	0.005 lb mass	10555	PLUG RD 1-1/8" HOLE 0.016-0.125" SHEET NYLON
18	8	0.005 lb mass	19699	No. 8 - 32 x 1/2" SELF DRILLING SCREW
19	2	0.516 lb mass	51572	TAIL LIGHT COVER PLATE 990

WELDER-GENERATOR-COMPRESSOR OPTION

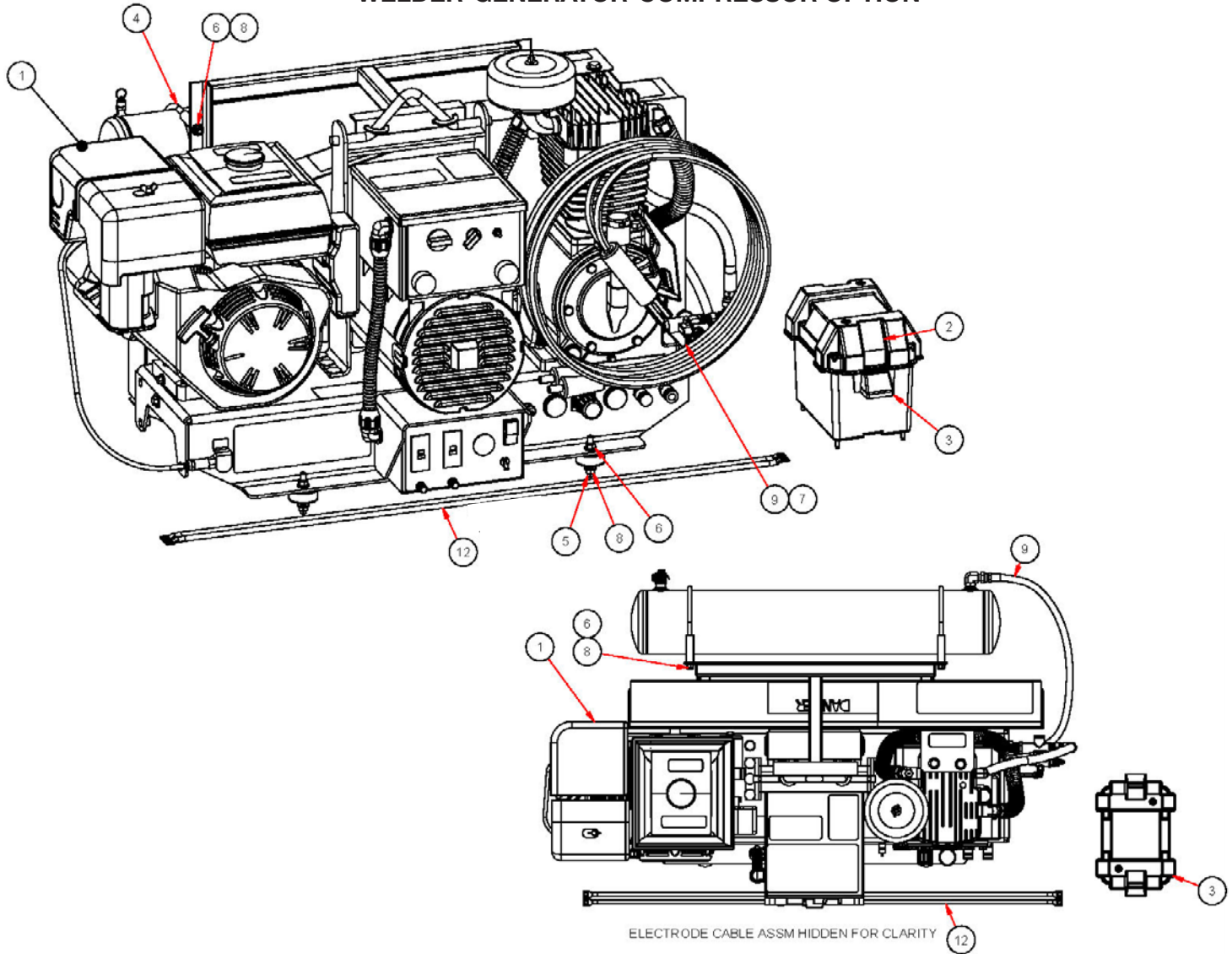


Table 11 - WELDER-GENERATOR-COMPRESSOR OPTION

ITEM	QTY	MASS	PART #	DESCRIPTION
1	1	553.000 lb mass	17409	GENERATOR/WELDER/COMPRESSOR COMBO
2	1	8.595 lb mass	21286-00	SP-30 BATTERY
3	1	0.972 lb mass	11219	BATTERY BOX - SMALL
4	1	44.699 lb mass	34510	TWIN 8 GALLON AIR TANK ASSEMBLY
5	4	0.094 lb mass	17644	3/8"-16 X 3/4" THK VIBRATION-DAMPING MOUNT
6	16	0.009 lb mass	19348	WASHER, FLAT 3/8
7	1	0.266 lb mass	17545	1/2 NPT X 3/8 NPT 90° ELBOW
8	16	0.02058 lb mass	19347	Ø3/8"-16 UNC NYLON LOCKNUT
9	1	0.131 lb mass	17682	HOSE 0.42" I.D. STEEL BRAIDED 3/8" NPT - 30"
10	4	0.019 lb mass	19597	Ø1/4"-14 x 3/4" HEX WASHER HEAD SELF DRILLING SCREW
11	1	9.000 lb mass	17166	ELECTRODE & WORK CABLE ASSM 10' (K2394-1)
12	1	2.817 lb mass	18657	CABLE BATTERY SET 45 IN

GENERATOR-COMPRESSOR OPTION

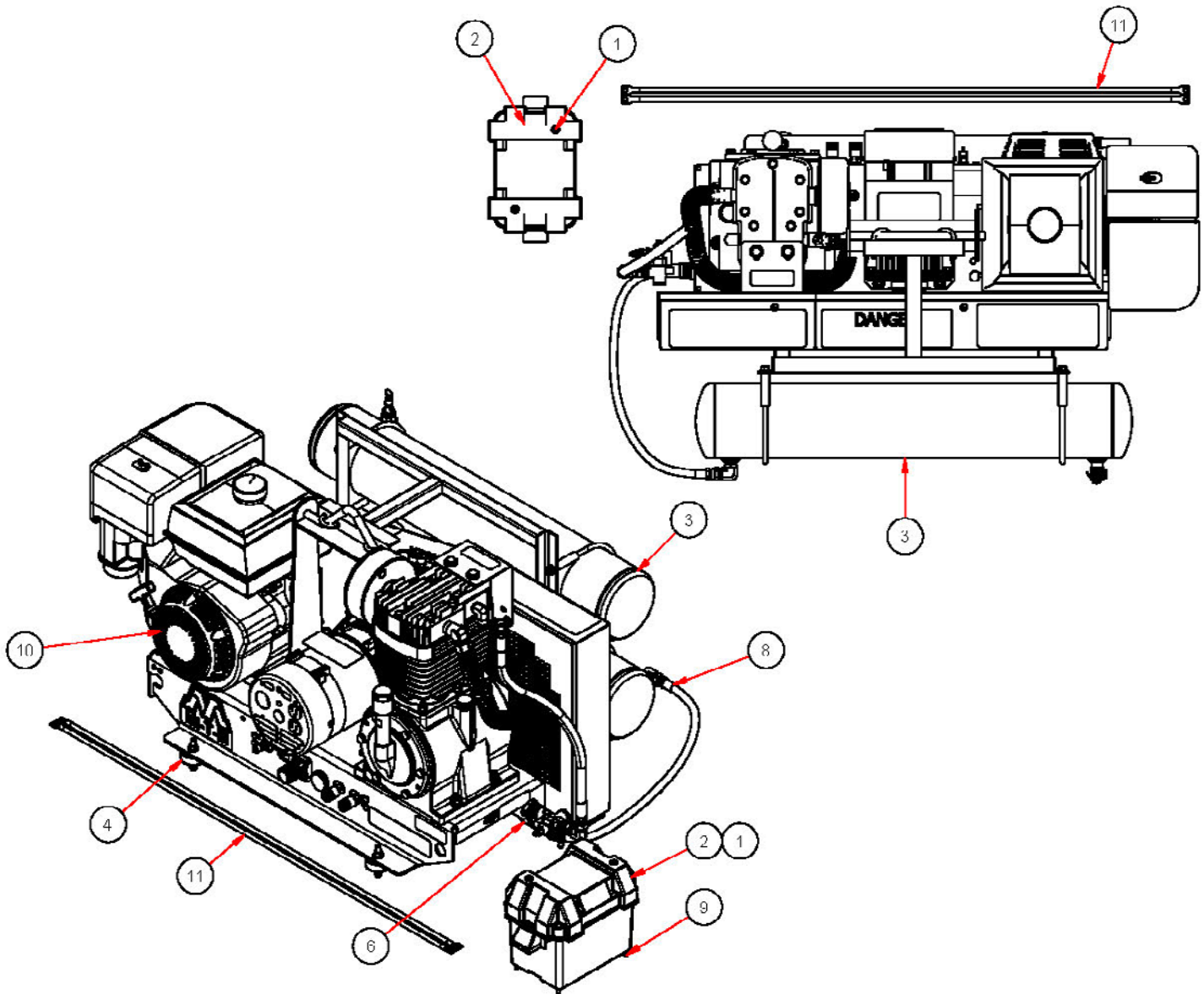
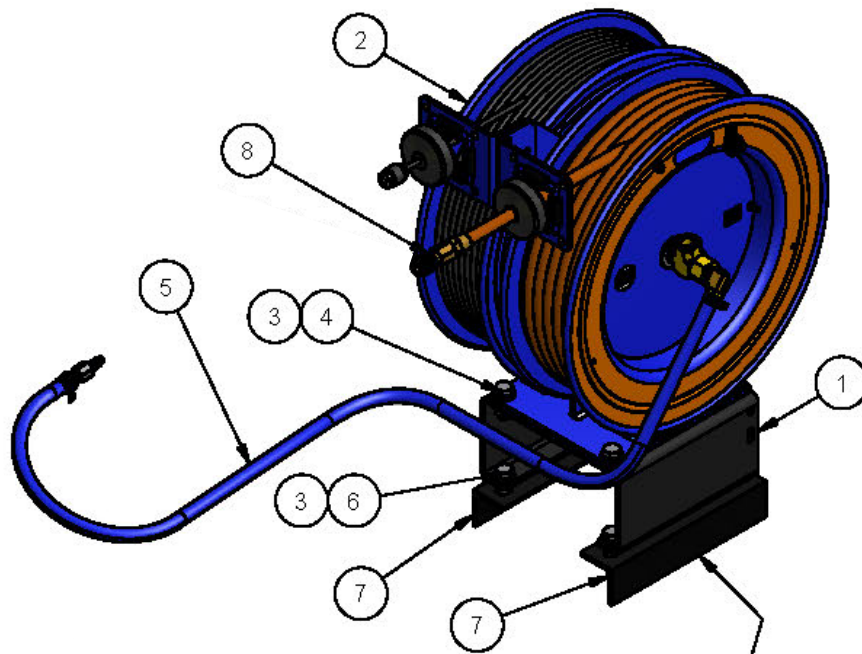


Table 12 - GENERATOR-COMPRESSOR OPTION

ITEM	QTY	PART #	DESCRIPTION
1	1	21286-00	SP-30 BATTERY
2	1	11219	BATTERY BOX - SMALL
3	1	34510	TWIN 8 GALLON AIR TANK ASSEMBLY
4	4	17644	3/8"-16 X 3/4" THK VIBRATION-DAMPING MOUNT
5	16	19348	WASHER, FLAT 3/8
6	1	17545	1/2 NPT X 3/8 NPT 90° ELBOW
7	16	19347	Ø3/8"-16 UNC NYLON LOCKNUT
8	1	17682	HOSE 0.42" I.D. STEEL BRAIDED 3/8" NPT - 30"
9	4	19597	Ø1/4"-14 x 3/4" HEX WASHER HEAD SELF DRILLING SCREW
10	1	17505	AIR COMPRESSOR/GENERATOR COMBO (AG2-SH13-B)
11	1	18657	CABLE BATTERY SET 45 IN

AIR AND ELECTRICAL DUAL REEL KIT OPTION



- BRACING TO GO UNDER THE UTILITY BOX TO SECURE MOUNTING OF COMBO HOSE REEL UNIT TO UTILITY BOX FLOOR

Table 13 - AIR AND ELECTRICAL DUAL REEL KIT OPTION

ITEM	QTY	MASS	PART #	DESCRIPTION
1	1	12.394 lb mass	25178	DIESEL REEL MOUNT
2	1	3.523 kg	11075	DUAL REEL (AIR/ELECTRICAL) C-L350-5012-F-WM
3	8	0.055 lb mass	19595	NUT, HEX, FLANGED, 1/2-13 UNC
4	4	0.157 lb mass	18943	BOLT, HEX, FLANGED, Steel, Mild 1/2-13 UNC X 1.25
5	1	0.772 lb mass	32446	3-IN-1 AIR HOSE ASSEMBLY
6	4	0.171 lb mass	19575	BOLT, HEX, FLANGED, 1/2-13 UNC X 1.5
7	2	2.012 lb mass	21483	HOSE REEL STIFFENER 990 TC
8	1	0.236 lb mass	10048	SLEEVE-LOCK, 3/8 FEMALE NPT, 1/4 COUPLING

SPARE TIRE KIT (STEEL)

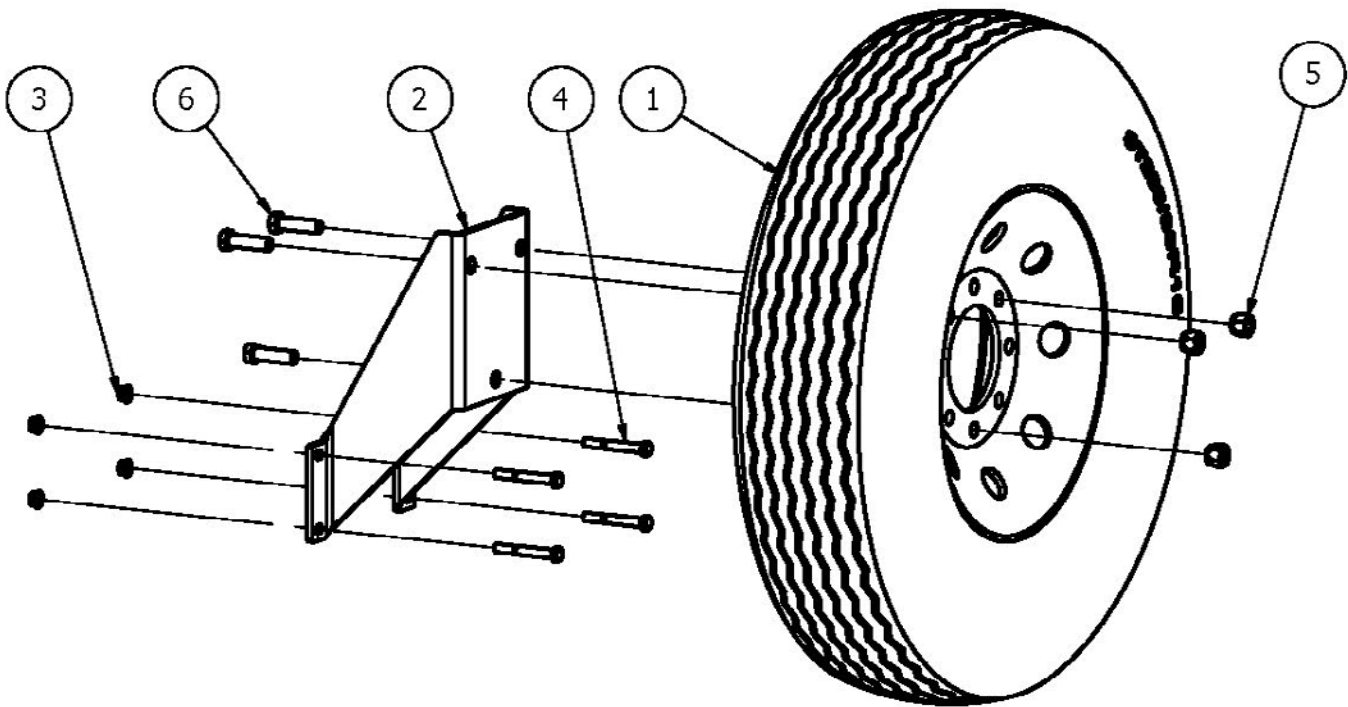


Table 14 - SPARE TIRE KIT (STEEL)

ITEM	QTY	PART #	DESCRIPTION
1	1	18131	ST235/80R16-E TIRE, STEEL RIM ASSEMBLY
2	1	24109	BOLT ON SPARE TIRE MOUNT
3	4	19564	NUT, HEX, FLANGED, 3/8-16 UNC
4	4	19330	BOLT, HEX, 3/8-16 UNC X 3 Steel, Mild
5	3	18991	Ø9/16-18 UNF x 3/4" LUG NUT
6	3	18992	Ø9/16"-18 UNF x 2" H.H.C.S.

SPARE TIRE KIT (ALUMINUM)

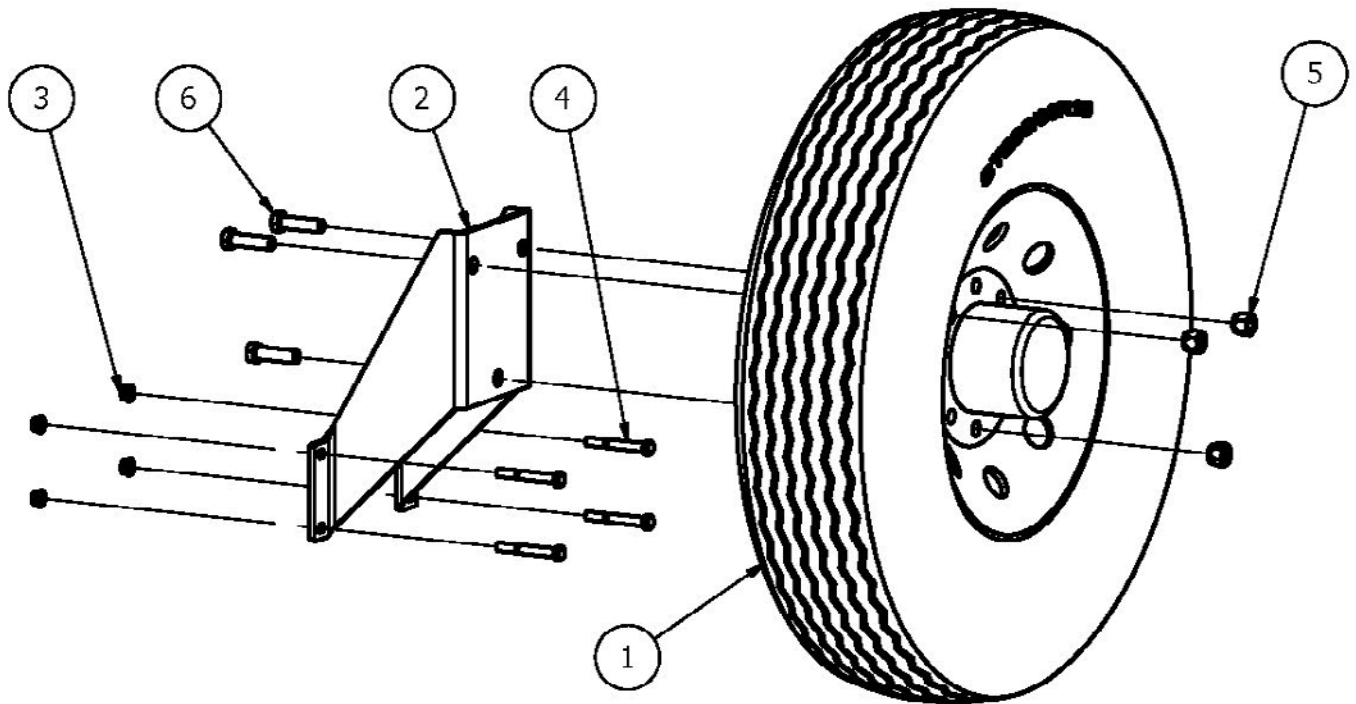


Table 15 - SPARE TIRE KIT (ALUMINUM)

ITEM	QTY	PART #	DESCRIPTION
1	1	17756	ST235/80R16-E TIRE, ALUMINUM RIM ASSEMBLY
2	1	24109	BOLT ON SPARE TIRE MOUNT
3	4	19564	NUT, HEX, FLANGED, 3/8-16 UNC
4	4	19330	BOLT, HEX, 3/8-16 UNC X 3 Steel, Mild
5	3	18991	Ø9/16-18 UNF x 3/4" LUG NUT
6	3	18992	Ø9/16"-18 UNF x 2" H.H.C.S.



(800) 437-2334 | www.meridianmfg.com | fueltrailers@meridianmfg.com